

DigPaleo

Making data and images of millions of insect specimens available on the web

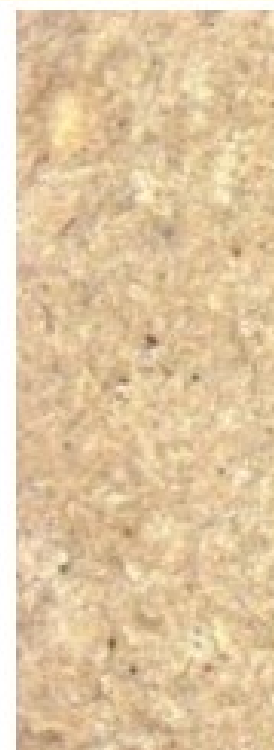
[ABOUT](#)

[NEWS](#)

[BROWSE](#)

[JOIN](#)

[EDUCATION](#)

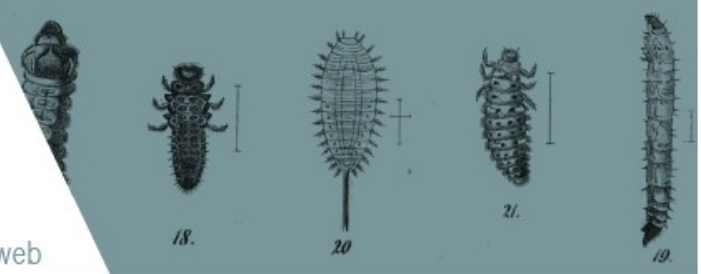






Digitize and make available all the major collections of fossil insect specimens in the United States

- digitize fossil insects to help us understand biotic response to environmental change and patterns of biodiversity
- use digitized fossil insects for taxonomic and phylogenetic studies
- broader impacts:



News

Entomological Collections Network

More



Featured Fossils

(PAL57649411701452)

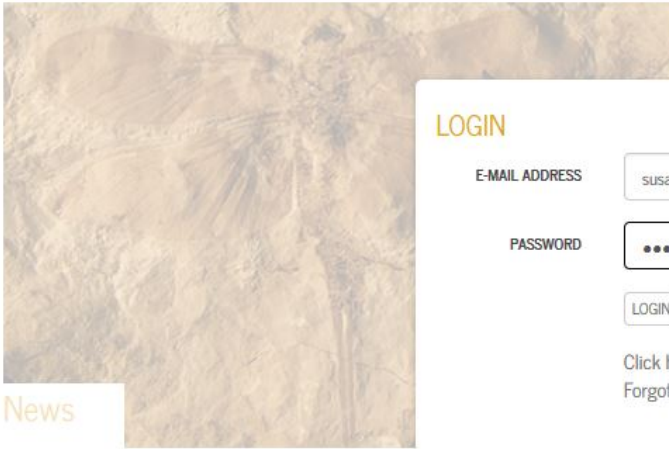
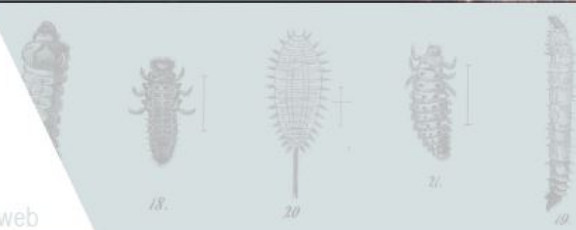


Latest Comments

 Microgastrinae
- KATJA SELTMANN

Featured Institution





News

LOGIN

E-MAIL ADDRESS

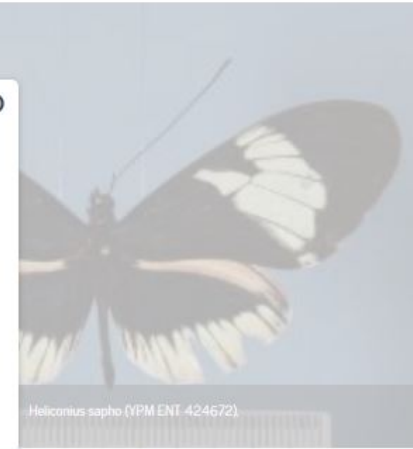
susan.butts@yale.edu

PASSWORD

.....

LOGIN

[Click here to register](#)
[Forgot your password?](#)



Heliconius sapho (YPM ENT 424672)

Entomological Collections Network

More



77,847

USNM 580913
GR 77,847

Latest Comments

 Microgastrinae
- KATJA SELTMANN

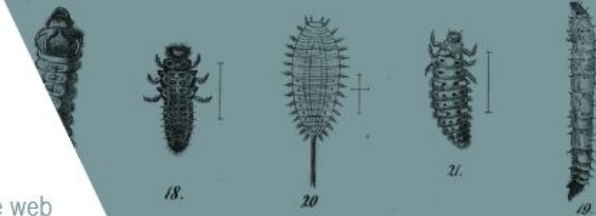
 Asilidae?
- SUSAN BUTTS

Featured Institution



Smithsonian

National Museum of Natural History




267026 SPECIMEN RESULTS 




YPM IP 041147
undet. Diptera
Common Name: True flies, Mos...
Fossil Deposit: Green River Fm



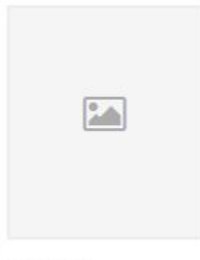
YPM IP 585232
undet. Insecta
Common Name: Insects
Fossil Deposit: Green River Fm



YPM IP 050227
undet. Hexapoda
Common Name: Hexapods
Fossil Deposit: Antero Fm




YPM IP 793159
undet. Diptera
Common Name: True flies, Mos...
Fossil Deposit: Green River Fm



YPM IP 794287
undet. Diptera
Common Name: True flies, Mos...
Fossil Deposit: Green River Fm



YPM IP 015702
Permoblattina permiana
Common Name: Arthropods
Fossil Deposit: Wellington Fm



YPM IP 522017
undet. Coleoptera
Common Name: Beetles
Fossil Deposit: Green River Fm



YPM IP 040753
undet. Ephemeroptera
Common Name: Insects
Fossil Deposit: Wellington Fm



YPM IP 389861
undet. Apocrita
Common Name: Ants, bees, wasps



YPM IP 042299



YPM IP 042299



YPM IP 042299

FILTER BY

SOURCE

- Harvard Museum of Comparative Zoology
- Illinois Natural History Survey
- Sam Noble Oklahoma Museum of Natural History
- Smithsonian National Museum of Natural History
- Virginia Museum of Natural History
- Yale Peabody Museum of Natural History

HAS MEDIA

- Has media
- Does not have media

FOSSIL/MODERN

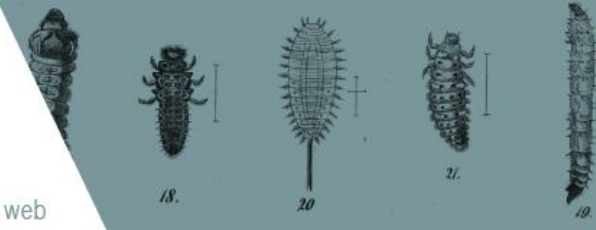
- Fossil
- Modern

COMMON NAME

- Antlike leaf beetles
- Ants
- Ants, bees, and wasps
- Ants, bees, narrow-waisted hymenopterans, and true wasps
- Aphids
- Arachnids
- Arthropods
- [and 97 more](#)

PERIOD

- Cambrian
- Campanian
- Carboniferous




6292 SPECIMEN RESULTS 

SOURCE: FOSSIL/MODERN: HAS MEDIA: HAS MEDIA




YPM IP 000001
Corymbites granulicollis
Common Name: Beetles
Fossil Deposit: Florissant Lake...



YPM IP 000019
Syntonoptera schucherti
Common Name: Insects
Fossil Deposit: Carbondale Fm



YPM IP 000034
Gerarus collaris
Common Name: Insects
Fossil Deposit: Carbondale Fm



YPM IP 000039
Apithanus jocularis
Common Name: Insects
Fossil Deposit: Carbondale Fm



YPM IP 000040
Narkema taeniatum
Common Name: Insects
Fossil Deposit: Carbondale Fm



YPM IP 000046
Cheliphlebia mazona
Common Name: Insects
Fossil Deposit: Carbondale Fm



YPM IP 000101
Tipula rigens
Common Name: True flies, Mos...
Fossil Deposit: Florissant Lake...



YPM IP 000103
undet. Hymenoptera
Common Name: Ants, bees, and...
Fossil Deposit: Florissant Lake...






FILTER BY

COMMON NAME

- Ants
- Ants, bees, and wasps
- Ants, bees, narrow-waisted hymenopterans, and true wasps
- Aphids
- Arthropods
- Bee fly
- Beetles
- [and 57 more](#)

PERIOD

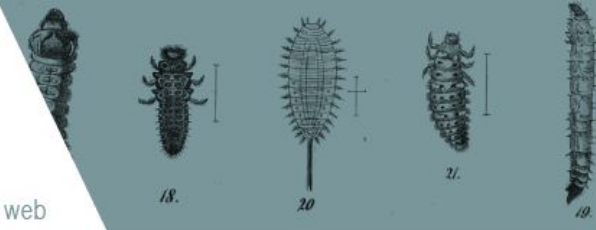
- Cenozoic
- Early Jurassic
- Early Late Cretaceous
- Early Permian
- Late Cretaceous
- Late Jurassic
- Late Pennsylvanian
- [and 6 more](#)

CONTINENT

- Europe
- North America

GENUS

- Acrocera
- Actea
- Anthracothemma
- Anthrakoris
- Aphaenogaster
- Apithanus
- Artinska




6292 SPECIMEN RESULTS




SOURCE: YALE PEABODY MUSEUM OF NATURAL HISTORY FOSSIL/MODERN: HAS MEDIA: HAS MEDIA




YPM IP 000001
Corymbites granulicollis
Common Name: Beetles
Fossil Deposit: Florissant Lake...



YPM IP 000019
Syntonoptera schucherti
Common Name: Insects
Fossil Deposit: Carbondale Fm



YPM IP 000034
Gerarus collaris
Common Name: Insects
Fossil Deposit: Carbondale Fm



YPM IP 000039
Apithanus jocularis
Common Name: Insects
Fossil Deposit: Carbondale Fm



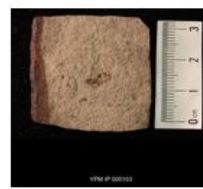
YPM IP 000040
Narkema taeniatum
Common Name: Insects
Fossil Deposit: Carbondale Fm



YPM IP 000046
Cheliphlebia mazona
Common Name: Insects
Fossil Deposit: Carbondale Fm



YPM IP 000101
Tipula rigens
Common Name: True flies, Mos...
Fossil Deposit: Florissant Lake...



YPM IP 000103
undet. Hymenoptera
Common Name: Ants, bees, and...
Fossil Deposit: Florissant Lake...

FILTER BY

COMMON NAME

- Ants
- Ants, bees, and wasps
- Ants, bees, narrow-waisted hymenopterans, and true wasps
- Aphids
- Arthropods
- Bee fly
- Beetles
- [and 57 more](#)

PERIOD

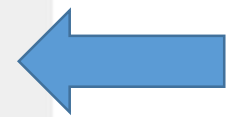
- Cenozoic
- Early Jurassic
- Early Late Cretaceous
- Early Permian
- Late Cretaceous
- Late Jurassic
- Late Pennsylvanian
- [and 6 more](#)

CONTINENT

- Europe
- North America

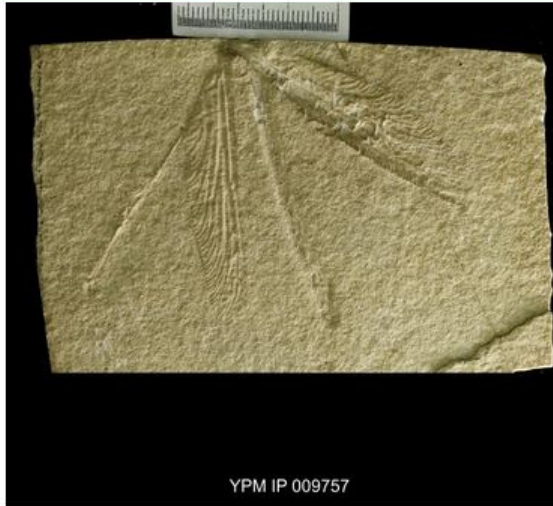
GENUS

- Acrocera
- Actea
- Anthracothemma
- Anthrakoris
- Aphaenogaster
- Apithanus
- Artinska



< PREV

<< BACK



YPM IP 009757

ADD TO ASSIGNMENT

COMMENTS (0)

SHARE

Stenophlebia latreillei

Arthropods

YPM IP 009757

YALE PEABODY MUSEUM OF NATURAL HISTORY

Identifier

A. Handlirsch

TAXONOMY

Kingdom: Animalia

Phylum: Arthropoda

Genus: Stenophlebia

Scientific Authorship

Germar

Nomenclatural Code

ICZN

STRATIGRAPHY

Geologic Time Period

Period: Late Jurassic

Age: Kimmeridgian

Rock Unit

Formation: Solnhofen Ls

LOCALITY

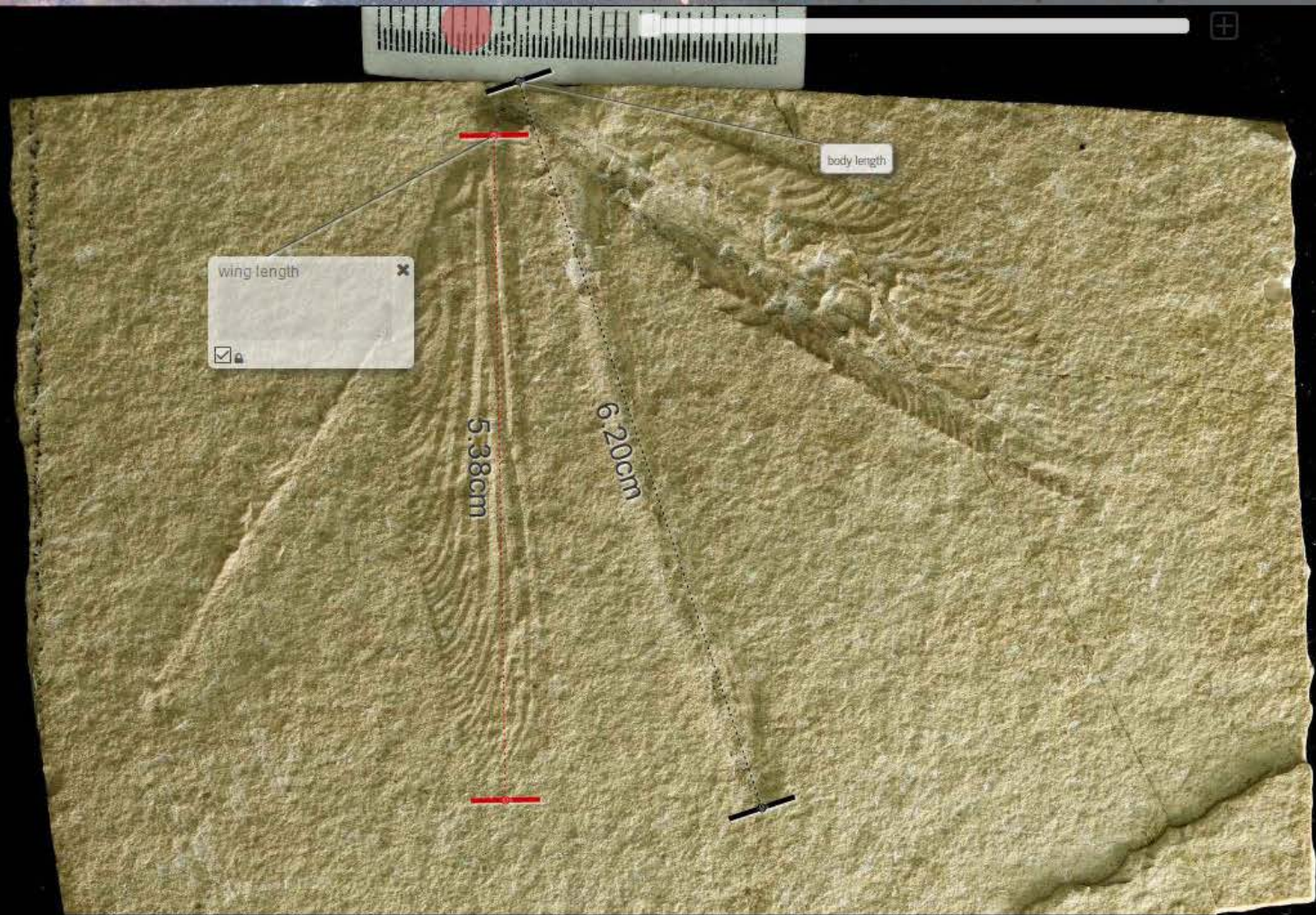
Continent: Europe

Country: Germany

State/Province: Bavaria

Locality: area around Solnhofen and Eichstadt





wing length x

body length

5.38cm

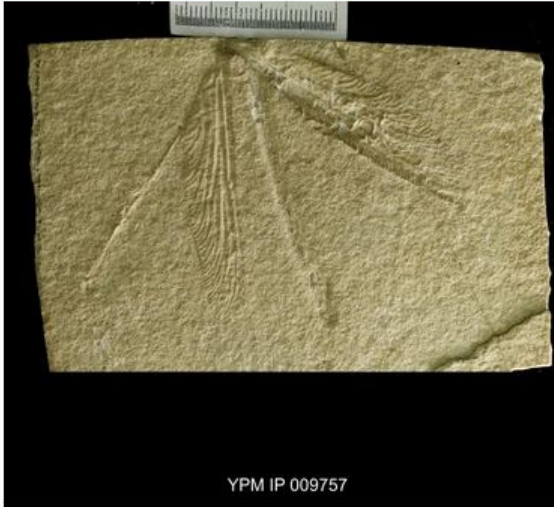
6.20cm

This image is scaled at 1cm = 9% of width.
To change scale enter the length with units (mm, cm, m, km, in, ft, miles, etc.) of the currently selected measurement below.
Length SET

YPM IP 009757

< PREV

<< BACK



YPM IP 009757

Stenophlebia latreillei

Arthropods

YPM IP 009757

YALE PEABODY MUSEUM OF NATURAL HISTORY

> NEXT

Identifier

A. Handlirsch

TAXONOMY

Kingdom: Animalia

Phylum: Arthropoda

Genus: Stenophlebia

Scientific Authorship

Germar

Nomenclatural Code

ICZN

STRATIGRAPHY

Geologic Time Period

Period: Late Jurassic

Age: Kimmeridgian

Rock Unit

Formation: Solnhofen Ls

LOCALITY

Continent: Europe

Country: Germany

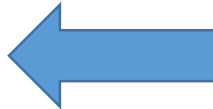
State/Province: Bavaria

Locality: area around Solnhofen and Eichstadt

ADD TO ASSIGNMENT

COMMENTS (0)

SHARE



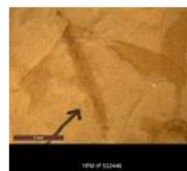
COMMENTS

add your comment

SAVE



YPM IP 237183, undet.
Tipulidae



YPM IP 522446, undet.
Tipulidae



YPM IP 454186, undet.
Tipulidae



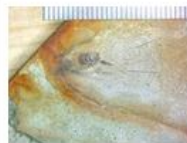
YPM IP 320691, undet.
Tipulidae



YPM IP 454192, undet.
Syrphidae



YPM IP 522042, undet.
Staphylinidae



YPM IP 793883, undet.
Orthoptera



MCZEntPALE-20520,
Vespidae sp.



YPM IP 522124, undet.
Trichoptera



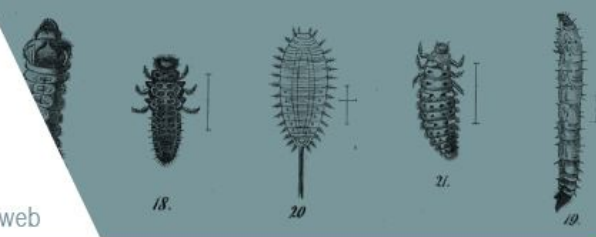
YPM IP 389118, undet.
Ichneumonidae



MCZEntPALE-20518,
Palaeovespa gillettei



YPM IP 320687, undet.
Hymenoptera



Geology 540 Green River Field Trip

All assignments

Edit Name/Description

Share Assignment

Manage Assignment Access

Start presentation

Download as:

Checklist [pdf]

PDF (thumbnails) [pdf]

Excel (basic information) [xlsx]

PowerPoint (basic information) [pptx]

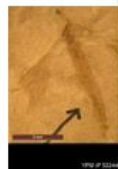
New Assignment

New User Group

Manage Your User Groups



YPM IP 237183, undet.
Tipulidae



YPM IP 522446, undet.
Tipulidae



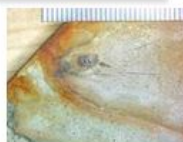
YPM IP 320691, undet.
Tipulidae



YPM IP 454192, undet.
Syrphidae



YPM IP 522042, undet.
Staphylinidae



YPM IP 793883, undet.
Orthoptera

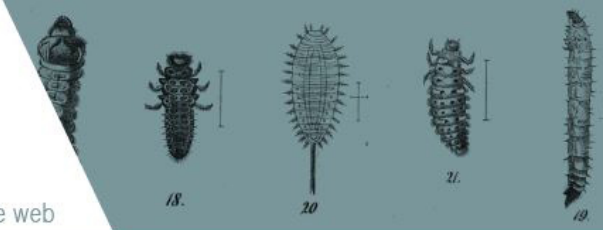


MCZ EntPALE-20520,
Vespidae sp.

COMMENTS

add your comment

SAVE



267026 SPECIMEN RESULTS 



PAL58421711708393

Fossil Deposit: Green River Fm



PAL58421611708392

Fossil Deposit: Green River Fm



PAL58421511708391

Fossil Deposit: Green River Fm



PAL58421211708388

Fossil Deposit: Green River Fm



PAL5842111708387

Fossil Deposit: Green River Fm



PAL58420911708386

Fossil Deposit: Green River Fm



PAL58147711706016

Fossil Deposit: Green River Fm



PAL58143911705977

Fossil Deposit: Green River Fm



PAL58109811705636

Fossil Deposit: Green River Fm



PAL58099811705535

Fossil Deposit: Green River Fm



PAL58098711705524

Fossil Deposit: Green River Fm



PAL58097711705514

Fossil Deposit: Green River Fm

FILTER BY

SOURCE

Harvard Museum of Comparative Zoology

Illinois Natural History Survey

Sam Noble Oklahoma Museum of Natural History

Smithsonian National Museum of Natural History

Virginia Museum of Natural History

Yale Peabody Museum of Natural History

HAS MEDIA

Has media

Does not have media

FOSSIL/MODERN

Fossil

Modern

COMMON NAME

Antlike leaf beetles

Ants

Ants, bees, and wasps

Ants, bees, narrow-waisted hymenopterans, and true wasps

Aphids

Arachnids

Arthropods

[and 97 more](#)

PERIOD

Cambrian

Campanian

Carboniferous

Coming Soon!



Cretaceous

Western Interior Seaway

How we got here...

*A database is
not enough.*

- lesson plans based on NGSS+
- provide curated collections (assignments)
- provide background materials
- provide videos from collections/field
- incorporate common names and paleogeography



**iDigPaleo Teacher Workshop
Yale Peabody Museum
July 20-21, 2015**

Thanks to:



EARTHCUBE