



Herbarium Pacificum specimen flow



AND THE HUMAN ELEMENT



Freeze specimens

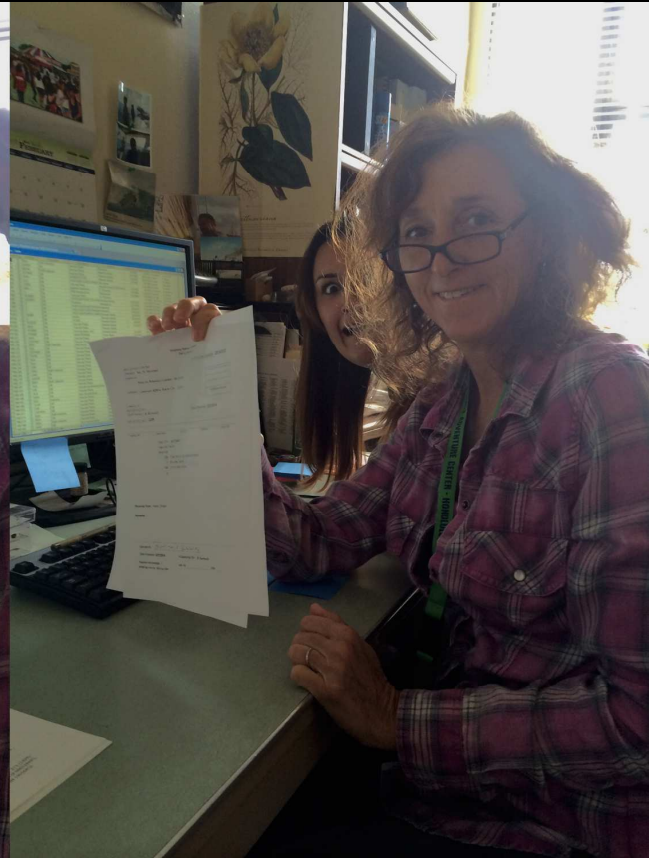
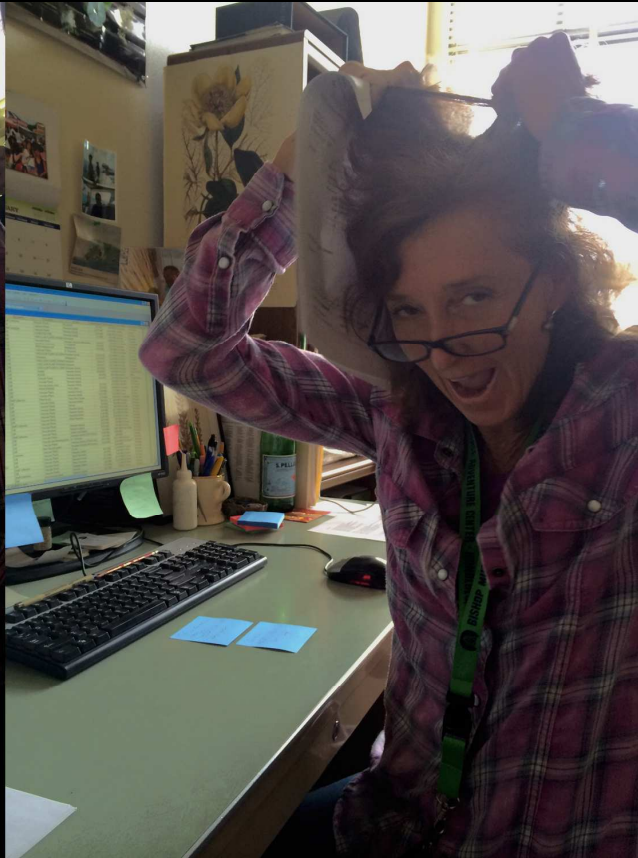
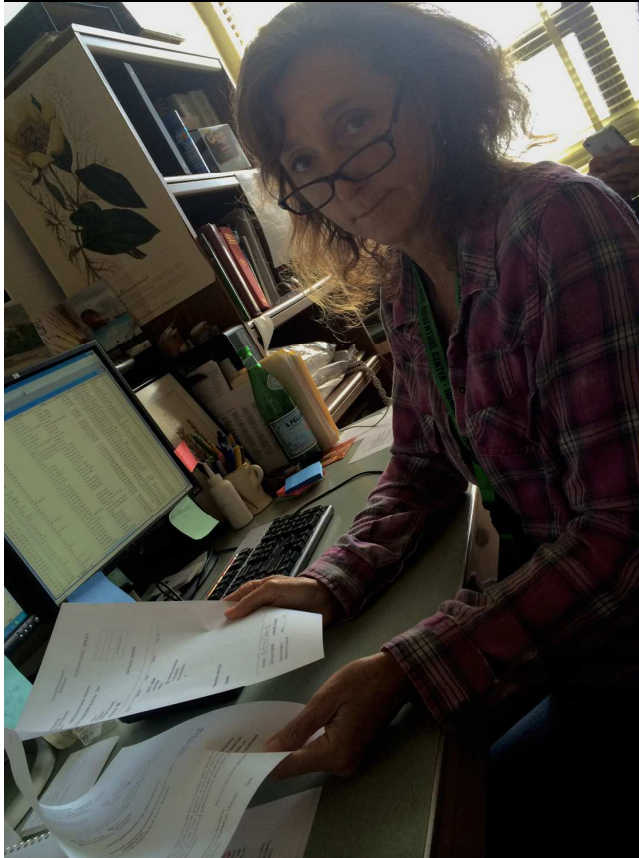


FUMIGATION PREPARATION





Count specimens



Paperwork

ACCESSION DROP TAG



MOUNTING QUE



**VOLUNTEERS
MOUNT
HERBARIUM
SPECIMENS**



**ALL NEW ACCESSIONS ARE DATA ENTERED,
BARCODED AND IMAGED**





Adding species names to database dropdown menu and barcoding



DATA ENTRY



**No
shame!
Bribe
your
volunteers!**



MOR.5c

BREADFRUIT OF THE PACIFIC ISLANDS MORACEAE

Te mai keang
Artocarpus Trecul
Fiji Rabi Island Buakonikikai or Nakoro Village

Introduced from Banaba, Ocean Island.
Fruits oblong, lumpy asymmetrical. Pebbly with hard raised or pyramidal sections flattened on top. Yellow flesh with small seeds. Leaves deeply dissected to the midrib with 3-4 pairs of widely separated, very serrated lobes. Dark blade with yellow vein. Numerous reddish hairs on lower veins.
Ethnobotany - Name means 'hand' or 'branched like coral', refers to the serrated, deeply dissected leaves. Called *Mei koeng* or *Weang* in Caroline atolls.

ACC. NO. 2003 192
DIGITIZED
Data Based
Cultivated
NTBG #

Diane Ragone 152 20 Jan 1987
Dominico Koroveibau 16.32S 179.59E

Funding provided by IPGRI
NATIONAL TROPICAL BOTANICAL GARDEN HERBARIUM (PTBG)

THOSE DARN SHEET NUMBERS



IMAGING QUE



STEM: Science Technology Engineering Math

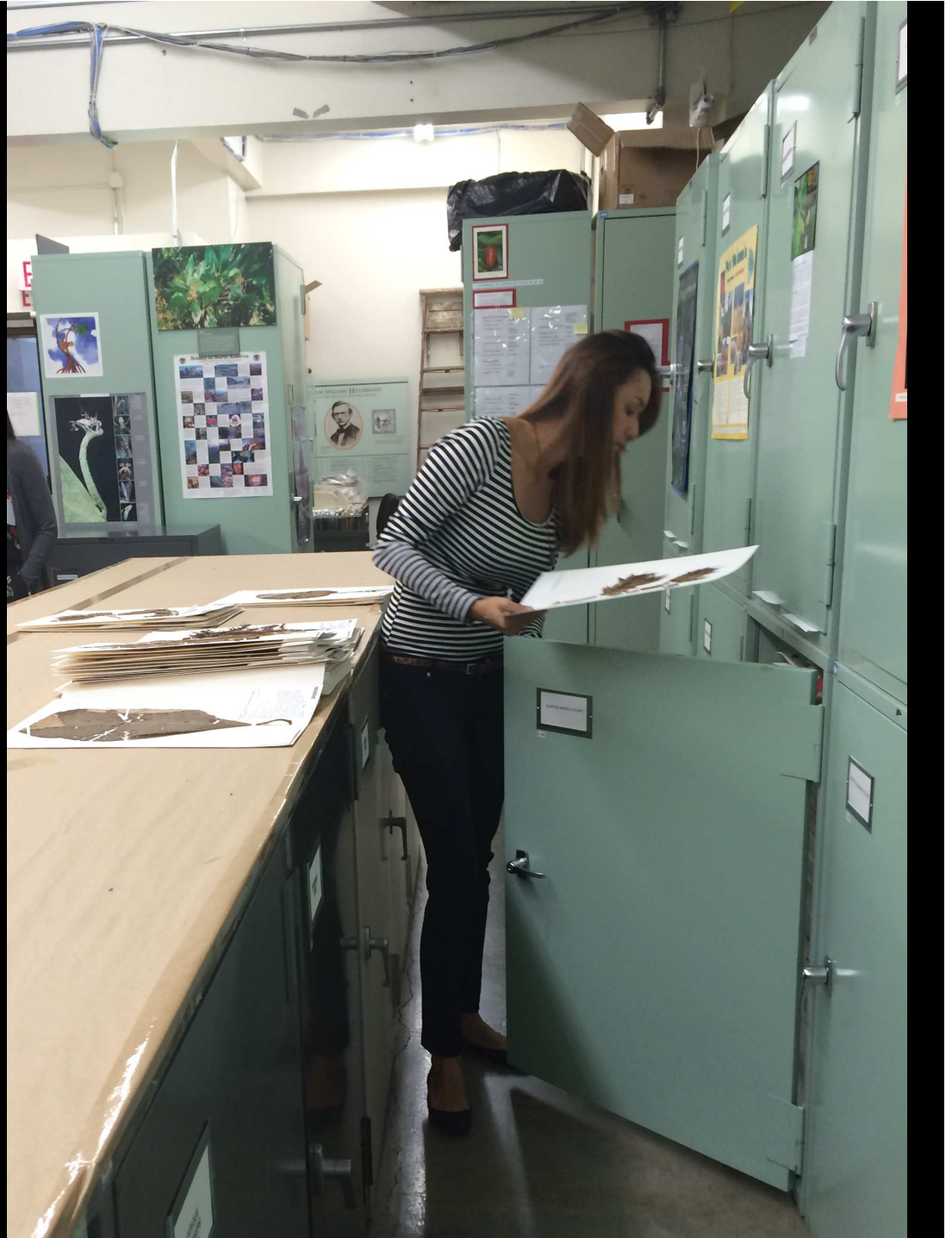


STEM FELLOW- IMAGING STATION



STAMPED DIGITIZED

**When data entry
and imaging is
complete
specimens are
put into sorting
cabinets for
filing**





FILING





OTHER FILING



GRANT FLOW: pulling specimens from collection

QUE FOR DATA ENTRY





DATA ENTRY



MOR.5c

BREADFRUIT OF THE PACIFIC ISLANDS MORACEAE

Te mai keang

Artocarpus Trecul

Fiji

Rabi Island

Buakonikikai or Nakoro Village

Introduced from Banaba, Ocean Island.

Fruits oblong, lumpy asymmetrical. Pebbly with hard raised or pyramidal sections flattened on top. Yellow flesh with small seeds. Leaves deeply dissected to the midrib with 3-4 pairs of widely separated, very serrated lobes. Dark blade with yellow vein. Numerous reddish hairs on lower veins.

Ethnobotany - Name means 'hand' or 'branched like coral', refers to the serrated, deeply dissected leaves. Called *Mei koeng* or *Weang* in Caroline atolls.

DIGITIZED

ACC. NO. 2003 192

Diane Ragone 152 20 Jan 1987
Dominico Koroveibau

16.32S 179.59E

Data
Based

Cultivated
NTBG #

Funding provided by IPGRI
NATIONAL TROPICAL BOTANICAL GARDEN HERBARIUM (PTBG)



IMAGING QUE



IMAGING

Data
Based

DIGITIZED

EMECYLON INDET.



FILING QUE



SORTING GENUS FOLDERS TO REFILE



REFILING GENUS FOLDERS





- <http://nsdb.bishopmuseum.org/SpecimenSearch>
- bkennedy@bishopmuseum.org