

Progressing toward

# ODOMATIC

Automatic species identification of  
Odonata from *in situ* photographs

Will Kuhn

NSF Postdoctoral Fellow  
crossveins.com @crossveins



THE UNIVERSITY of  
**TENNESSEE** **UT**  
KNOXVILLE









[Register](#) | [Log In](#) | [Forgot Password?](#)

## Records

158034 record(s) found

### Filters

**User Filter:**

**Status Filter:**



**Taxa Filter:**



**Jurisdiction Filter:**

**Lookup by OC#:**

[Apply Filters](#)

**Instructions:** Below is a listing of records that meet the criteria above. You can sort the records below by clicking on the appropriate column heading. When sorted in ascending order, the column heading will have an up arrow ↑ next to it. When sorted in descending order, the column heading will have a down arrow ↓ next to it. To toggle between sorting in ascending and descending order, simply click the same column heading again.

<a href="#">Photo</a>	<a href="#">Species</a>	<a href="#">Collected</a>	<a href="#">Submitted</a>	<a href="#">Vetted</a>	<a href="#">Actions</a>
	<b>Scientific Name:</b> <i>Sympetrum vicinum</i>  <b>Common Name:</b> Autumn Meadowhawk	<b>Collected On:</b> 2017-Oct-28  <b>Collected By:</b> <a href="#">Michael Sheehan</a>  <b>Jurisdiction:</b> Fairfield County, Connecticut, United States at 41.14744° N 73.38086° W  <b>Favorite:</b>	<b>Submitted By:</b> <a href="#">Michael Sheehan</a>  <b>OC#:</b> 474592	<b>Vetted By:</b> N/A  <b>Decision:</b> Pending	

	<b>Scientific Name:</b> <i>Erythemis vesiculosa</i>  <b>Common Name:</b> Great Pondhawk	<b>Collected On:</b> 2017-Oct-25  <b>Collected By:</b> <a href="#">Steven Mlodinow</a>	<b>Submitted On:</b> 2017-Nov-2  <b>Submitted By:</b> <a href="#">Steven Mlodinow</a>	<b>Vetted On:</b> Unknown Date  <b>Vetted By:</b> N/A	
-------------------------------------------------------------------------------------	-----------------------------------------------------------------------------------------------------	----------------------------------------------------------------------------------------------------	---------------------------------------------------------------------------------------------------	-------------------------------------------------------------------	---------------------------------------------------------------------------------------

- 158K records
- 110K images
- 578 ~N American spp
- distribution maps
- county checklists
- field guides
- power Dragonfly ID app



## Crowd-sourcing identification

- 👍 large pool of workers
- 👍 fast
- 👍 scales well
- 👎 IDs may be inaccurate



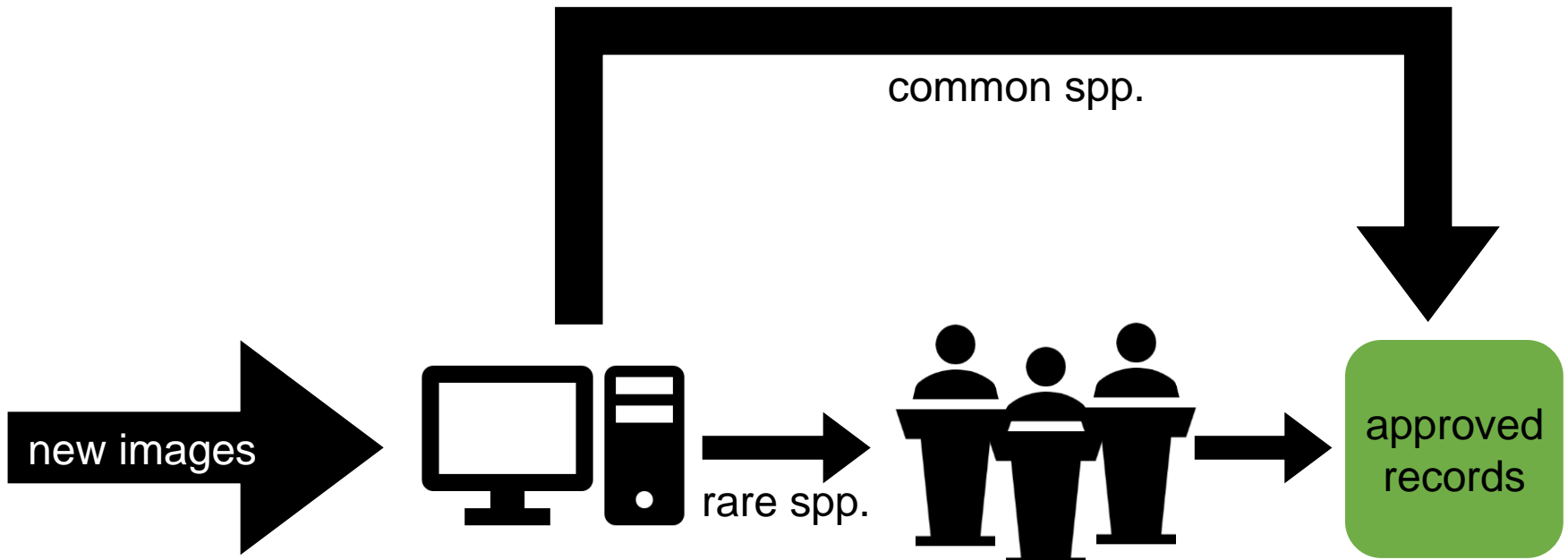
## Expert-sourcing identification

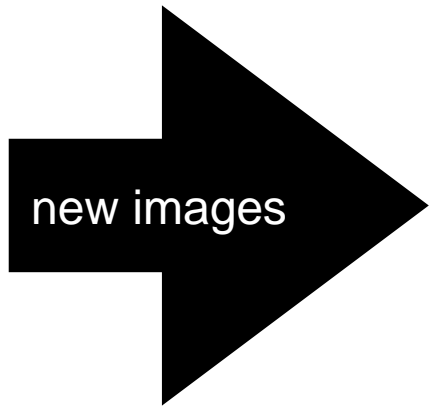
- 👎 small pool of workers
- 👎 slower
- 👎 scales poorly
- 👍 IDs very accurate



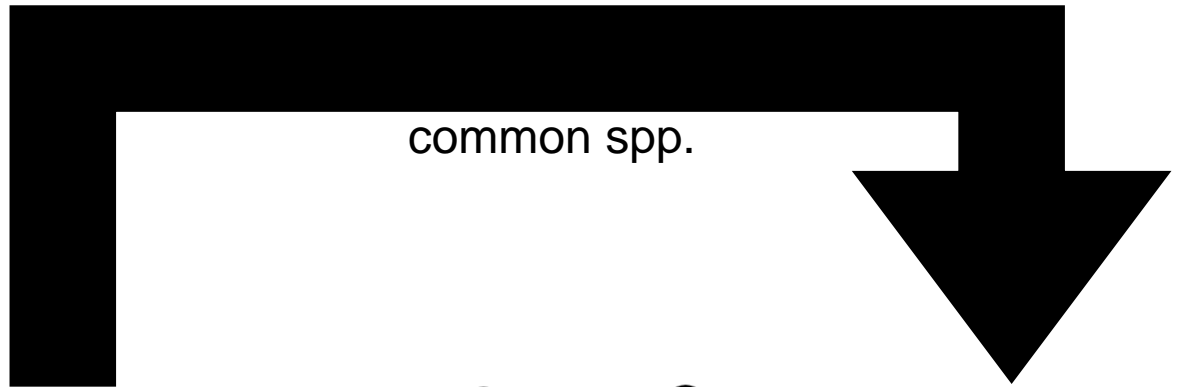
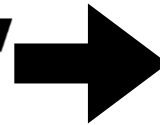
## Automated identification

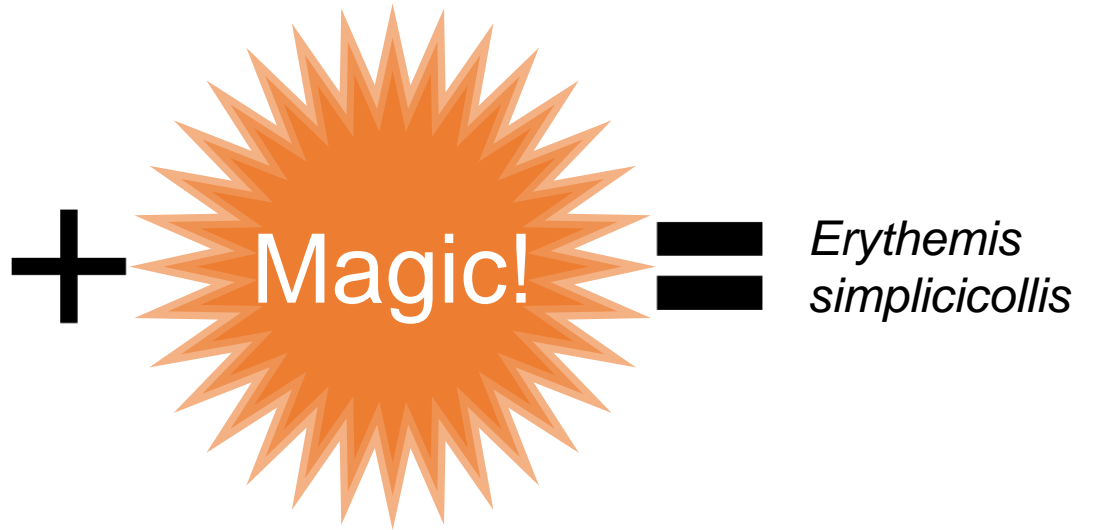
- 👍 no workers needed
- 👍 extremely fast
- 👍 scales extremely well
- 👍 IDs accurate 👎 but only with >>> training data





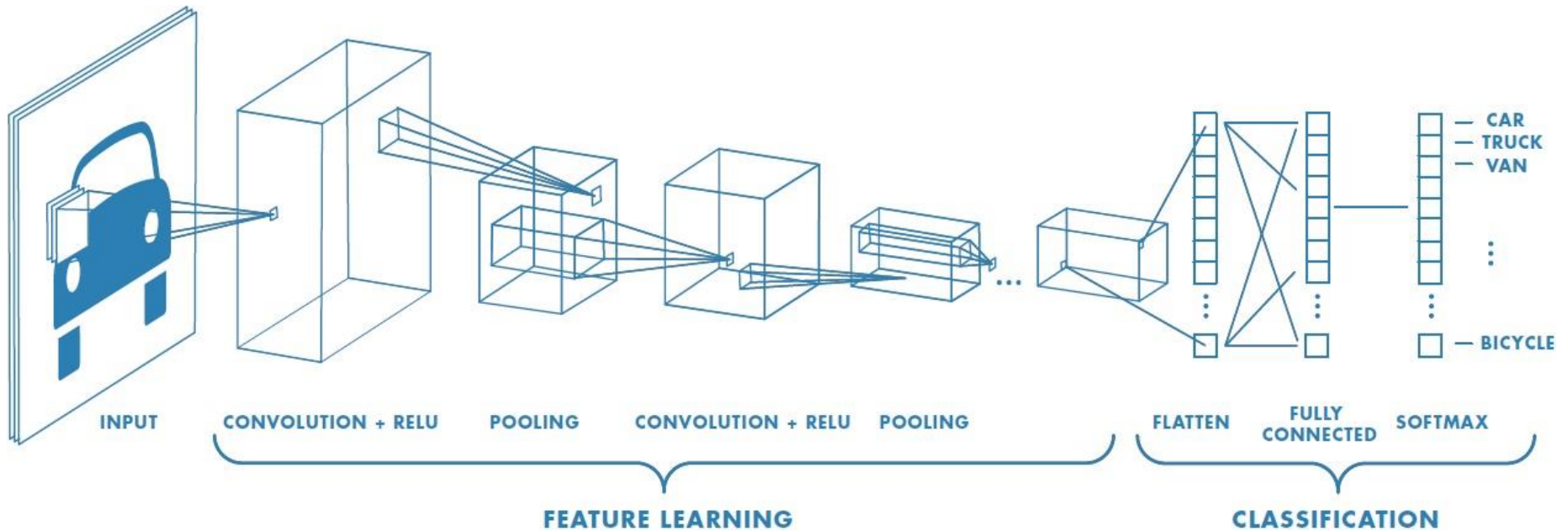
rare spp.







# Convolutional neural networks



# Convolutional neural networks



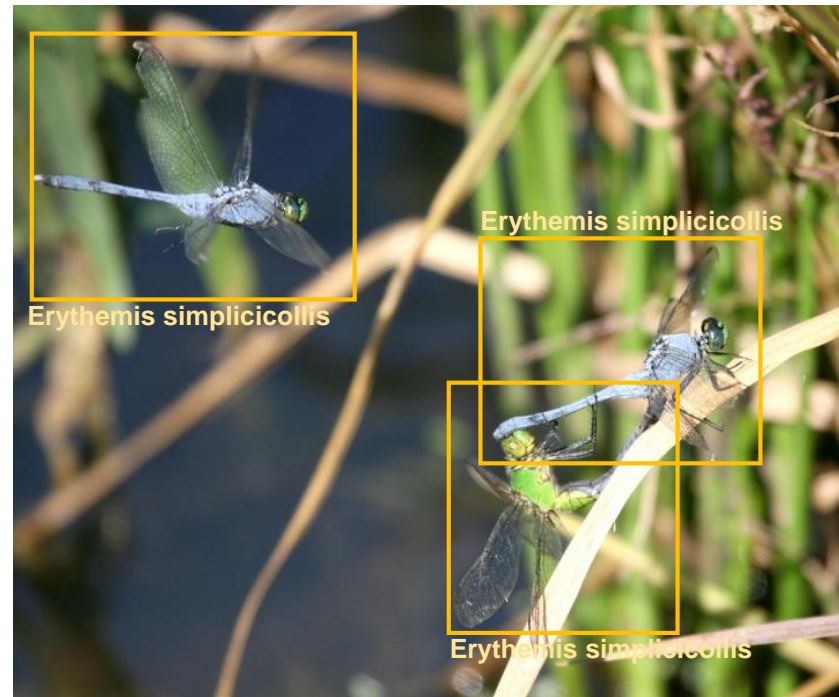
Feature visualization of convolutional net trained on ImageNet from [Zeiler & Fergus 2013]



→ detection →



→ classification

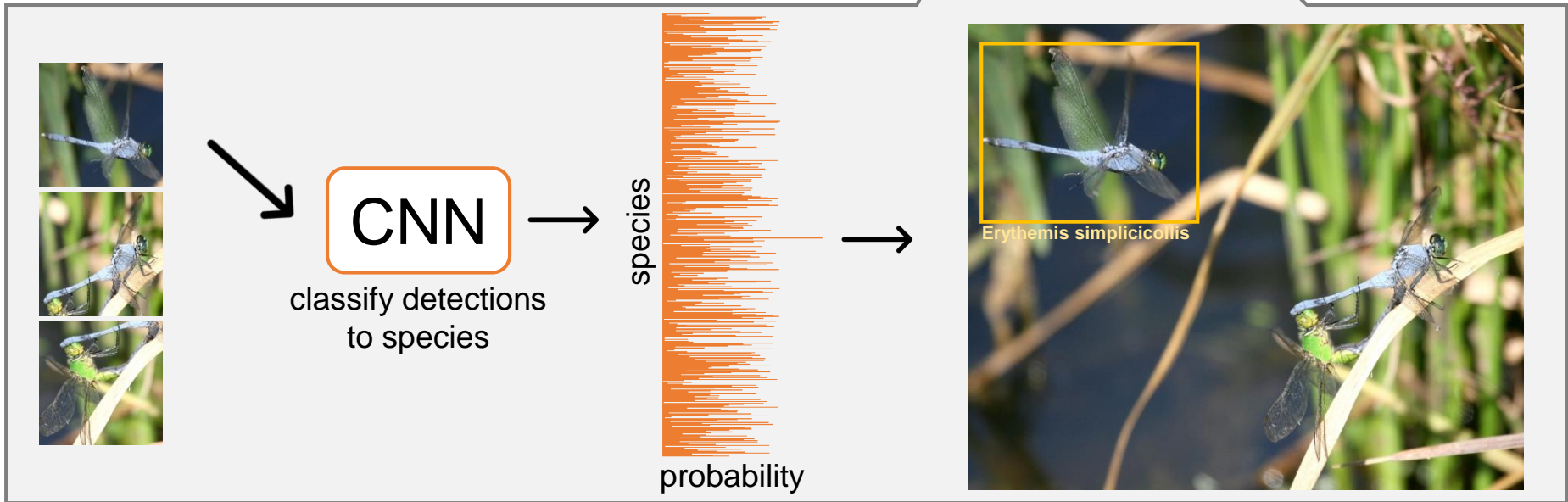
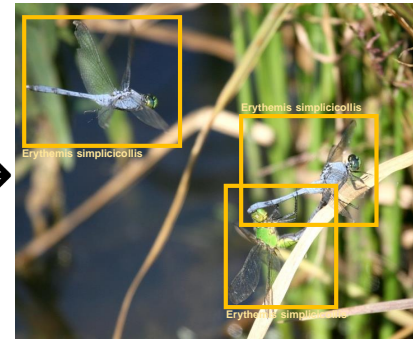




→ detection →



→ classification →

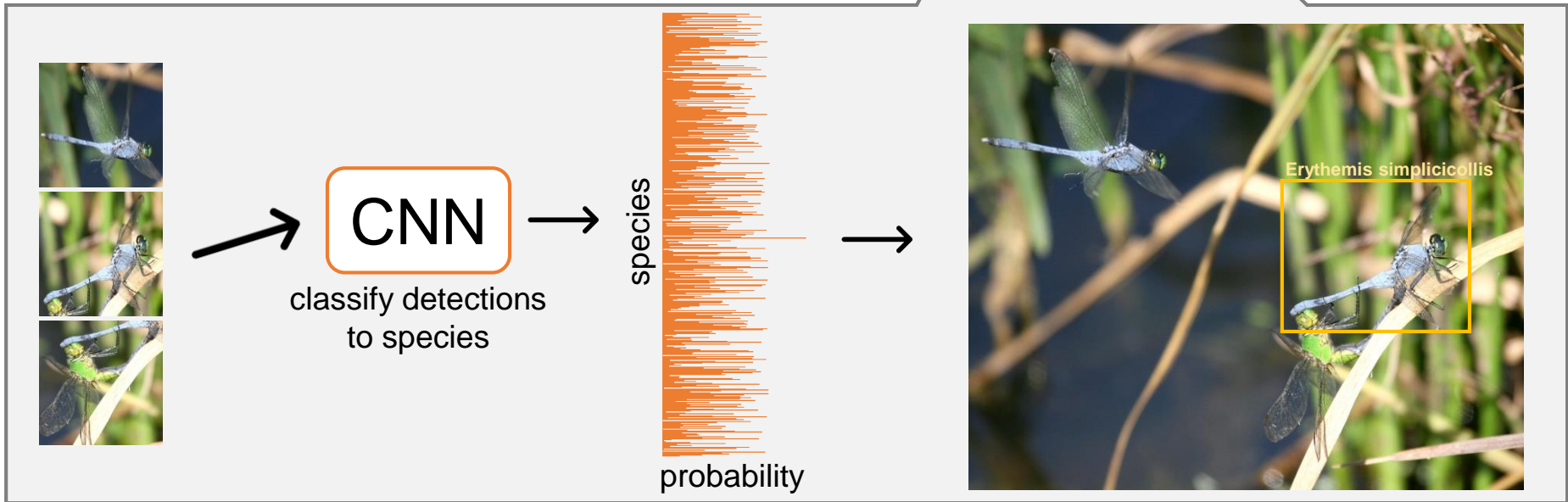
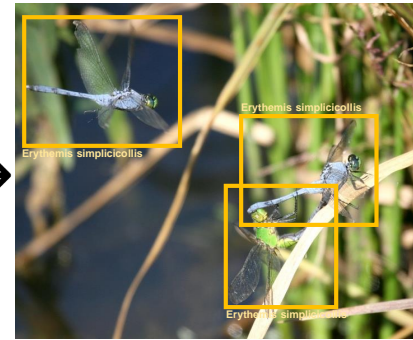




→ detection →



→ classification →

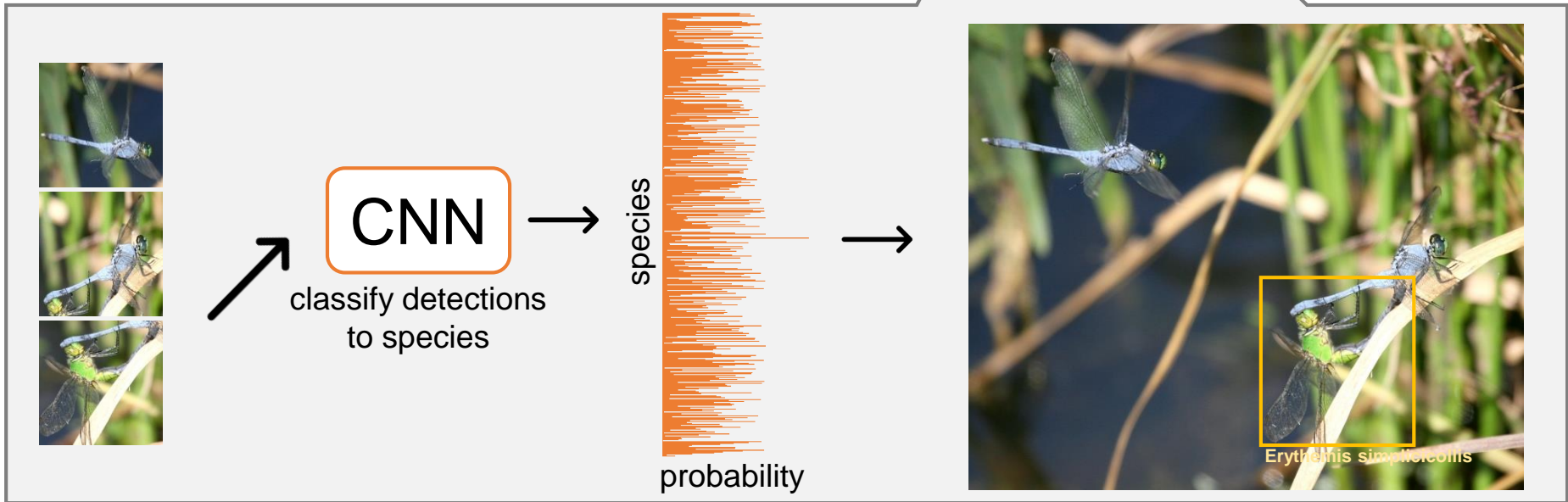
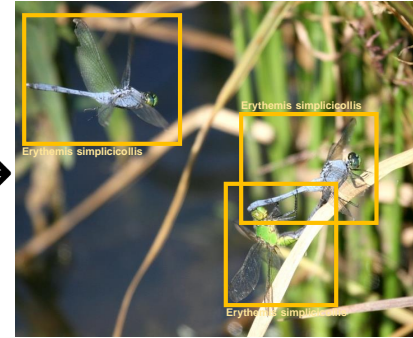




→ detection →



→ classification →

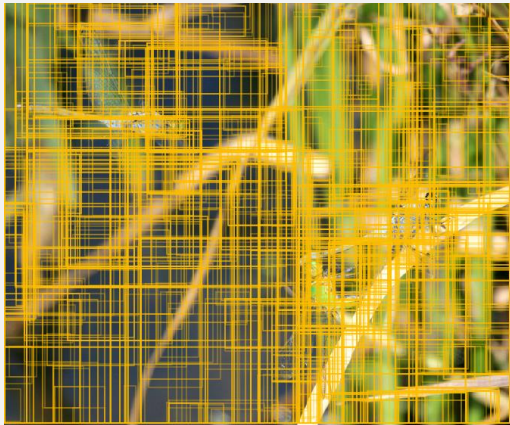
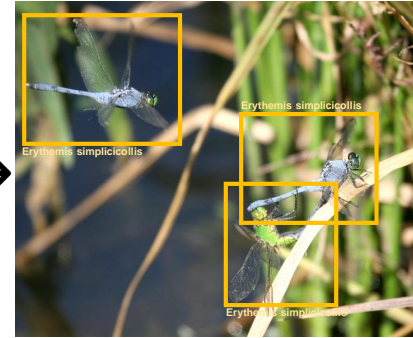




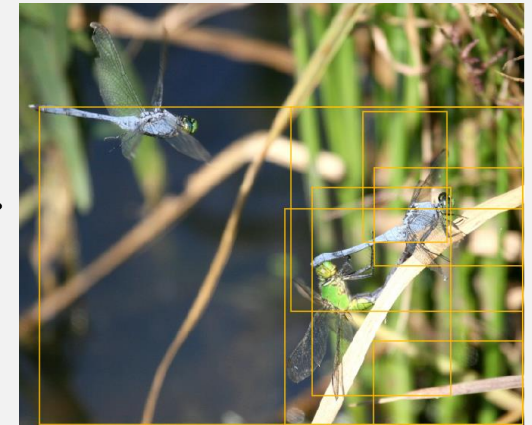
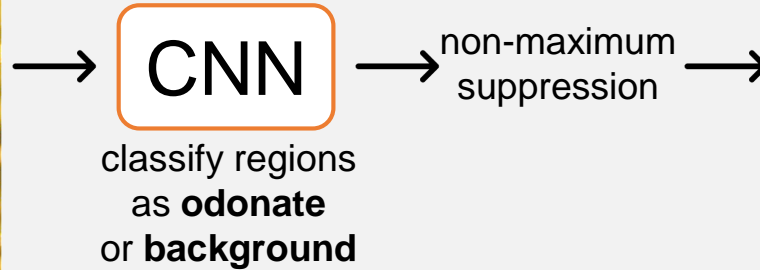
→ detection →



→ classification →

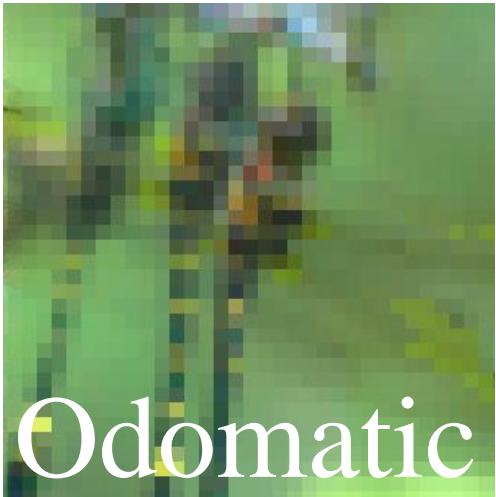


Get region proposals via  
SelectiveSearch [1]



Detected regions

Adaptation of R-CNN [2]

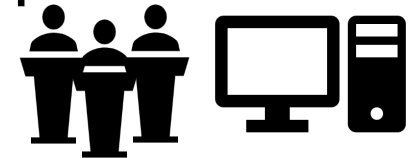




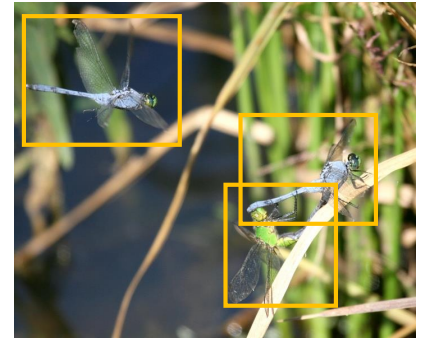
# Final remarks

- Odomatic under development
- Starting with odonate detection

- Combining automation with expert-sourcing in OdonataCentral



- Open-sourced, Python-based system
- Adaptable for digital collections of other taxa



# Acknowledgements



John Abbott  
THE UNIVERSITY OF  
**ALABAMA**



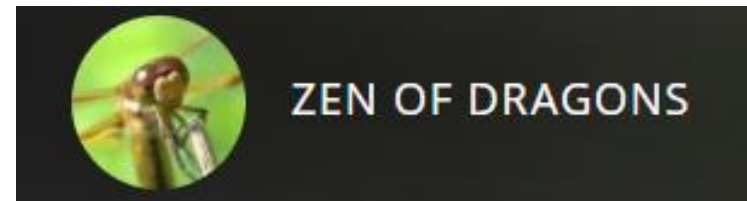
Jessica Ware  
**RUTGERS**  
UNIVERSITY | NEWARK



Mongi Abidi



THE UNIVERSITY of  
**TENNESSEE** **UT**  
KNOXVILLE



**ZOONIVERSE**

\* This work is supported by the National Science Foundation under Grant Nos. 1611642. Any opinions, findings, and conclusions or recommendations expressed in this material are those of the author(s) and do not necessarily reflect the views of the National Science Foundation.