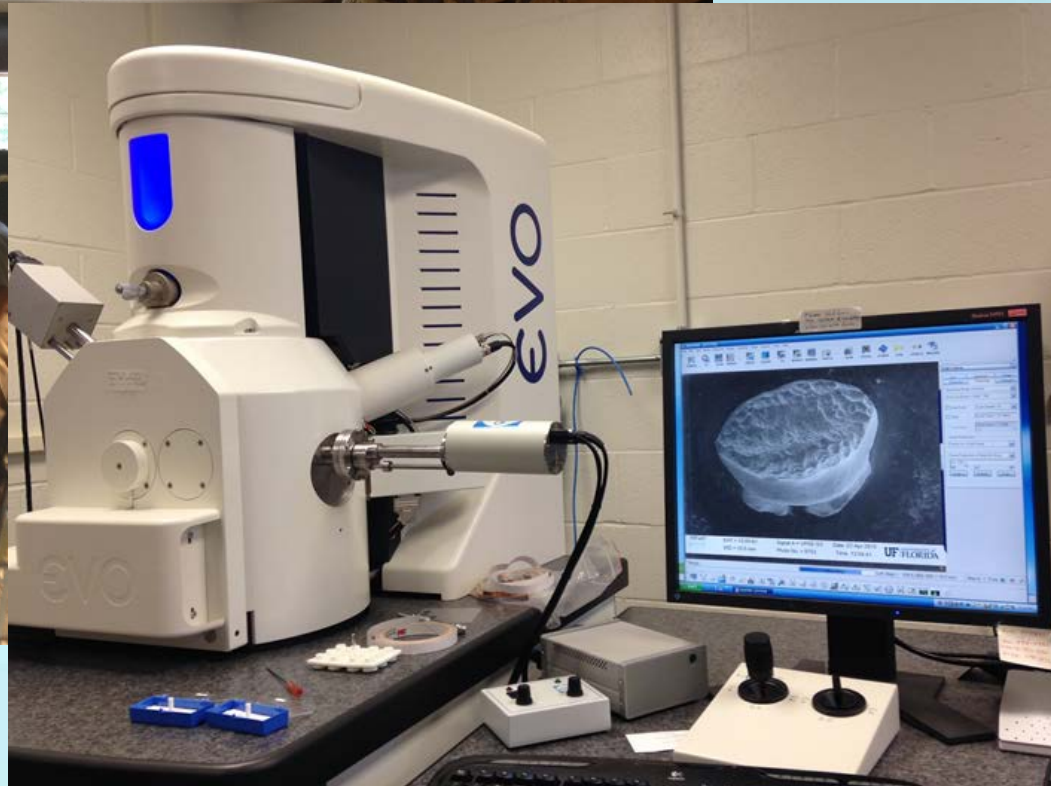


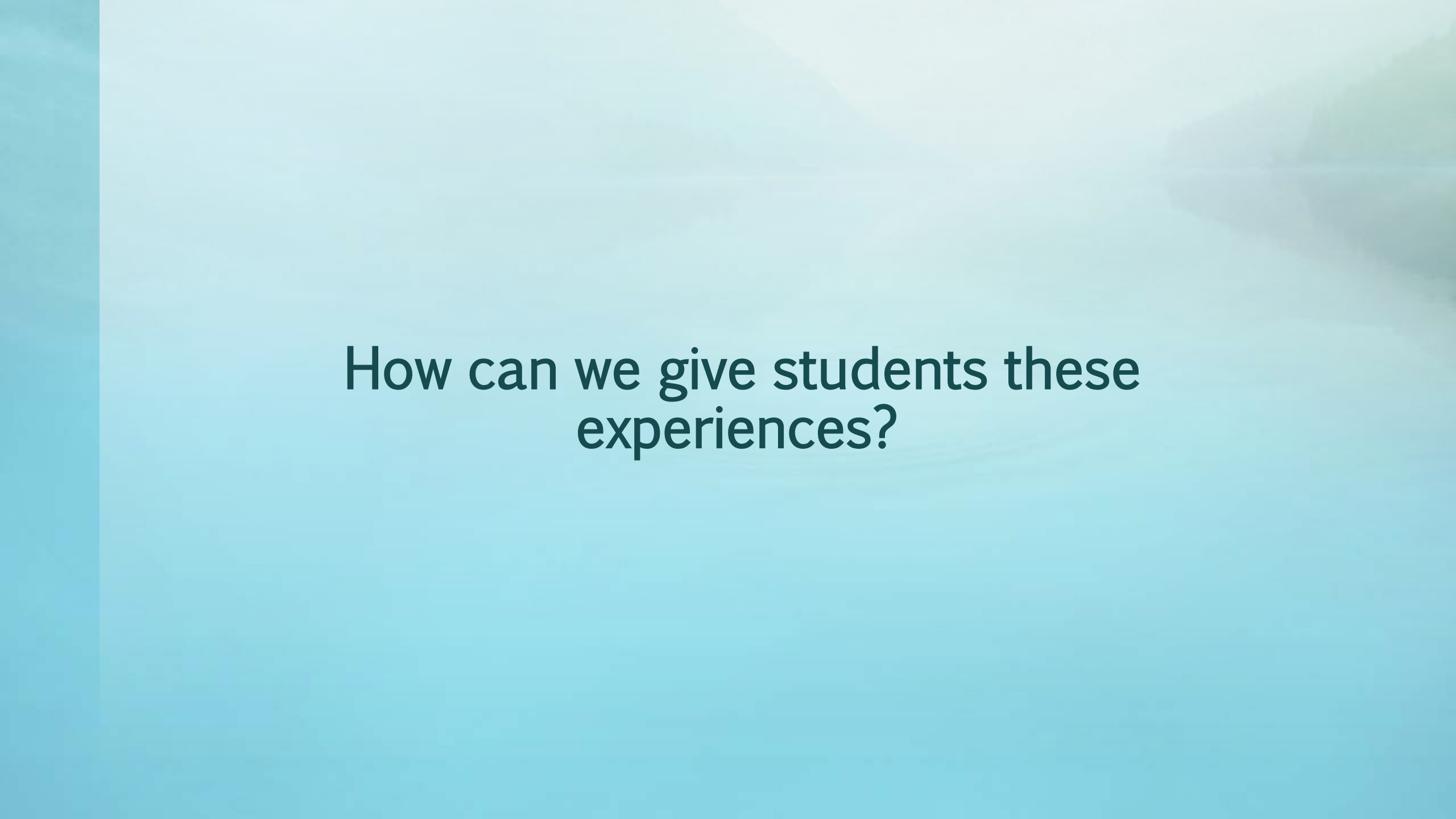
Bridge Between Fossil Clubs and K-12: Opportunities for Collaboration









A serene landscape featuring a calm lake in the foreground, a dense forest of evergreen trees on the right, and misty mountains in the background. The entire scene is overlaid with a light blue gradient that transitions from a darker shade on the left to a lighter shade on the right. The text is centered in the middle of the image.

How can we give students these experiences?

Outside the Classroom

Tabling Events

Artificial Excavations

Guided Field Trips

Summer Camps

Tabling Events





Artificial Excavations



Guided Field Trips



Inside the Classroom

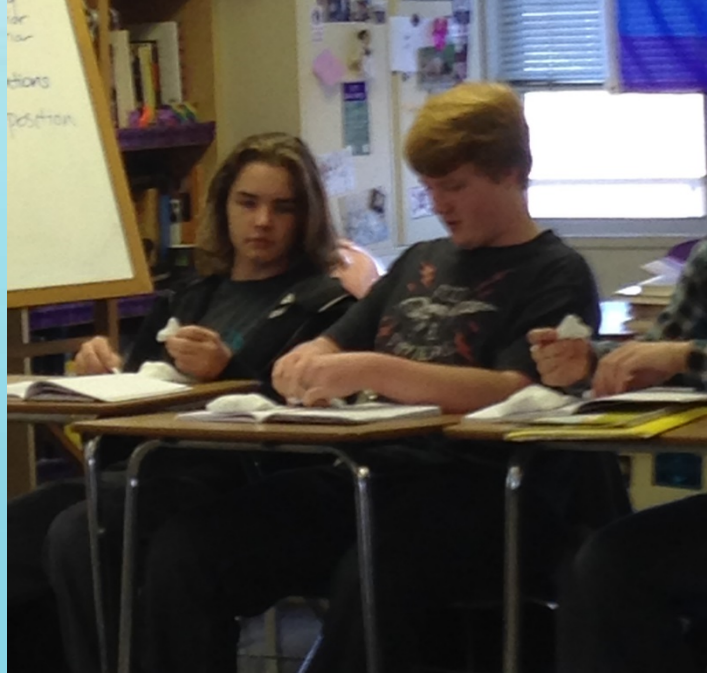
Lessons

Artificial Excavations

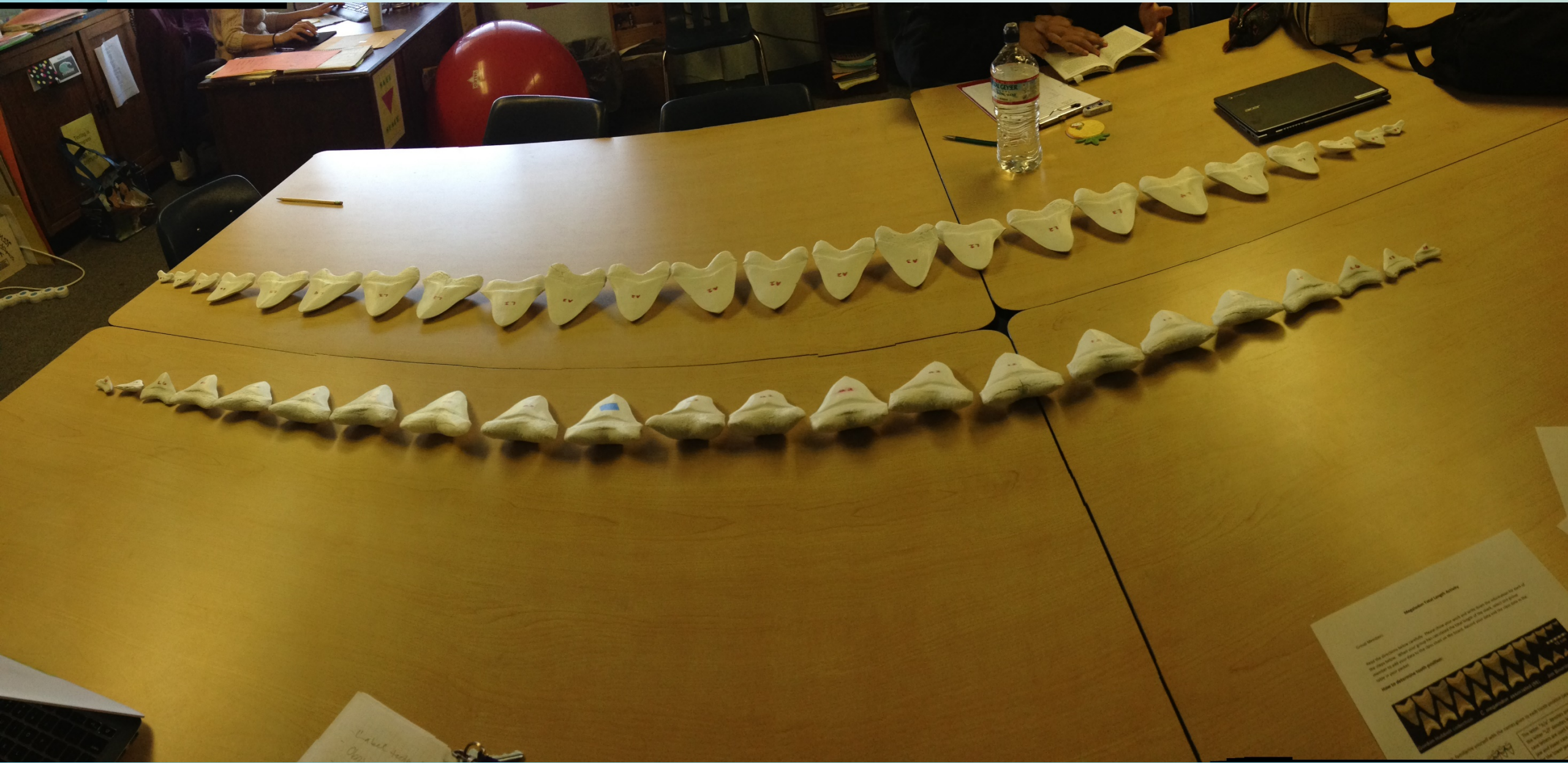
Career Days

Exhibits

Classroom Visits





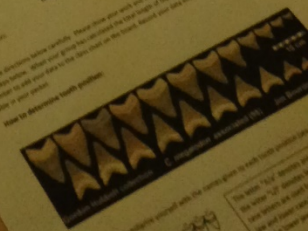


Maximilian's Tooth Length Training

General Information:

Apply the procedure below carefully. Repeat when you work with the teeth for calibration and check of the device. Make sure you get the correct order of the teeth. Make sure you have the correct order of the teeth. Make sure you have the correct order of the teeth. Make sure you have the correct order of the teeth.

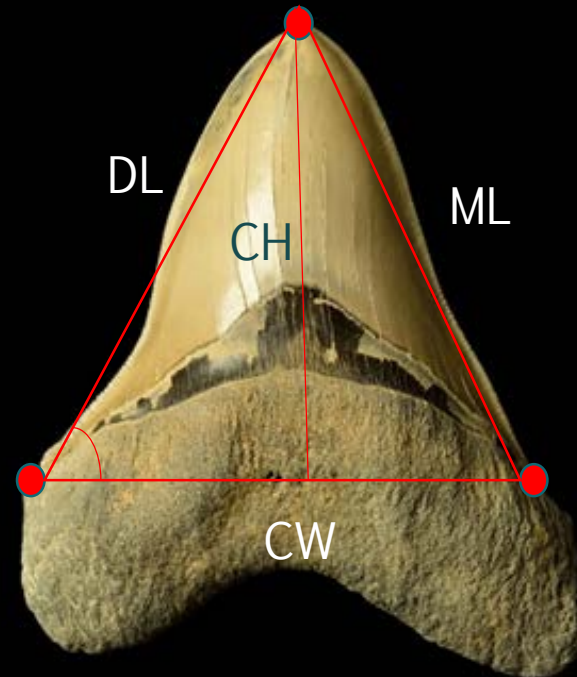
Place the Maximilian's Tooth Length Training



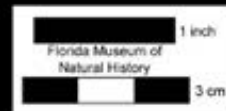
Maximilian's Tooth Length Training



How can we



osition?



Position	Regression Equation (x=CH)
A1	TL= 5.234+11.522x
A2	TL= -2.16+12.103x
A3	TL= 19.162+15.738x
L1	TL= 5.540+14.197x
L2	TL= 4.911+13.433x
L3	TL= 0.464+14.550x
L4	TL= 5.569+17.658x
L5	TL= -5.778+26.381x
L6	TL= -71.915+50.205x
L7	TL= -48.696+69.292x
L8	TL= -84.781+104.968x
L9	TL= -62.050+142.142X

A 1			0.1	
A 2	37.8 ft	40	0.2	
A 3	24.6		0.3	50
L 1	56.6		12	
L 2	43.7	15.0	12	50.4
L 3	42.9		13	63
L 4	56.35	61.5	14	91.8
L 5	69.0		15	73.7 99.8
L 6	99.7	104.66	16	129.7
L 7	82.4		17	151.8
L 8	107		18	101.7 86
L 9	81.7			

What do teachers
want to see in the
classroom?

How can we
maximize our
impact on
students?

**How can we give students these
experiences?**

How can fossil
club members get
involved?

How can we get
more students
involved in fossil
clubs?