



Advancing Digitization of  
Biodiversity Collections (ADBC)

## ***2017 Annual Summit***

*Gainesville, Florida  
November 2-3, 2017*





Dear colleagues,

Welcome to the 7th annual iDigBio-hosted summit for ADBC scientists and students! Again this year, the summit is a large event with an anticipated 130 participants, including those from 20 TCNs, other colleagues working with biodiversity collections data, guests from the NSF, and iDigBio. As in past years, we have a packed agenda of presentations and breakout groups, but we also have plenty of opportunities for networking and discussion. The latter include daily morning and afternoon breaks, lunches, an evening reception at the Florida Museum, and an open meeting space that is available any time of day for small groups to gather and discuss topics of specific interest to them.

The national effort to digitize information in biocollections has been successfully catalyzed by funding from NSF and activities of TCNs and iDigBio. As a community, we have defined digitization priorities, integrated best practices into workflows, provided cyberinfrastructure resources including a search portal, addressed major challenges via working groups, and built collaborations with data providers/users. We have improved digitization practices, increased involvement in digitization and training, and adopted informatics tools that improve the efficiency and scalability of digitization in all types of collections.

In its 7th year, iDigBio is working with staff in more than 500 collections in 336 institutions. We have communicated with our stakeholders to increase access to collections data through workshops, webinars, the iDigBio Spotlight, and social media. During its first 6 years, iDigBio sponsored attendance of 3,700 participants from 550 institutions to 118 workshops that targeted digitization-related topics. iDigBio has ingested 1,636 recordsets (up from 850 a year ago) containing 105 million specimen records and 22 million images and other media (up from 73 million and 17 million a year ago). Because of the way specimens in collections are organized, with some stored individually (e.g., plants on herbarium sheets, birds in drawers), and others stored as “lots” (several specimens of tadpoles in a jar of alcohol, many fossils in a shared matrix), we estimate that an average “specimen record” refers to about 3 specimens. This suggests that the number of specimens represented digitally in iDigBio is close to 315 million.

All data ingested are indexed so that queries and other types of index-based access are supported. Searches can be done through a Web-based graphical interface or through APIs. Search and analytical tools enable users to mine diverse data such as taxonomy, location, images, traits, and vocalizations. As TCNs generate increasingly complete and valuable data, iDigBio is placing a greater emphasis on data improvement and use in research and outreach. ADBC-funded initiatives including iDigBio, TCNs, and PENs have been cited in over 100 publications in 2017 alone, and the number is increasing rapidly — see graph at [idigbio.org/research](http://idigbio.org/research).

Outreach activities developed with TCNs include the creation of education-specific portals and innovative applications using specimen data and images, and educational modules using biodiversity data for K-12 and undergraduate audiences. We also engage directly with the public through online platforms and at events such as WeDigBio.

Our work is continuing, and the results are increasingly visible to the scientific community. Let’s make Summit VII a catalyst for even greater success!

A handwritten signature in black ink that reads "Larry Page". The signature is fluid and cursive, with a long horizontal line extending to the right.

Larry Page, Director



## Contacts for Questions or Problems

If you encounter logistical issues during the Summit, please contact Project Assistant Cathy Bester at 352.214.5043.

## Wireless Access

Wireless access for onsite iDigBio guests is provided by the University of Florida. All participants will use one of the following wireless networks:

**uf** is for UF faculty, staff, and students only.

Go to [getonline.ufl.edu](http://getonline.ufl.edu) to get connected. Note that you will need your Gatorlink credentials.

**eduroam** allows any user from an eduroam participating site to get network access at any institution connected to eduroam.

Eduroam access is available at the University of Florida and the Gainesville Regional Airport.

**ufvisitor** is for all other participants.

You will be granted access to the Internet once you accept the Acceptable Use Policy.

Note that this service has restrictions (e.g., no VPN, SSH, or MySQL connections).

## Summit Wiki

For the most up-to-date information regarding the Summit agenda, participants, logistics and other items of interest, please visit the event wiki page at: [https://www.idigbio.org/wiki/index.php/ADBC\\_Summit\\_2017](https://www.idigbio.org/wiki/index.php/ADBC_Summit_2017)

## Adobe Connect

To the extent possible, the Summit sessions will be broadcasted and recorded using Adobe Connect. Meeting hosts will monitor the chat to address questions/concerns. To connect, go to

<https://idigbio.adobeconnect.com/summit7/> and chose "Enter as Guest", type your first name and surname, then click "Enter Room". For more information: [https://www.idigbio.org/wiki/index.php/Web\\_Conferencing](https://www.idigbio.org/wiki/index.php/Web_Conferencing)

## Meals and Other Activities

We will provide box lunches November 2 and 3 for *registered* participants. **All** participants are invited to a catered reception with heavy hors d'oeuvres and a cash bar at Powell Hall on Thursday from 6:30 - 9:30 pm.

## Florida Museum Reception – Thursday, November 2, 6:30 - 9:30pm

Roland Roberts, NSF Program Director and BIO Centers Science Advisor, will welcome guests followed by a presentation about the Florida Museum's 100-year Anniversary by David Reed, Florida Museum Natural History Chair. Museum exhibits including the celebratory exhibition -- Rare, Beautiful & Fascinating: 100 Years @Florida Museum -- will be open throughout the evening. Heavy hors d'oeuvres and a cash bar will be among the offerings.

## Natural History Seminar at the Harn Chandler Auditorium – Friday, November 3, 4:00 - 5:45pm

Join us for light refreshments and a presentation by Jonathan Hendricks of the Paleontological Research Institute on the *Digital Atlas of Ancient Life*. Co-sponsored by the Florida Museum's Department of Natural History, iDigBio, the FOSSIL Project, and the Paleontological Society.



## Social Media

The hashtag for the event is #ADBCSummit.

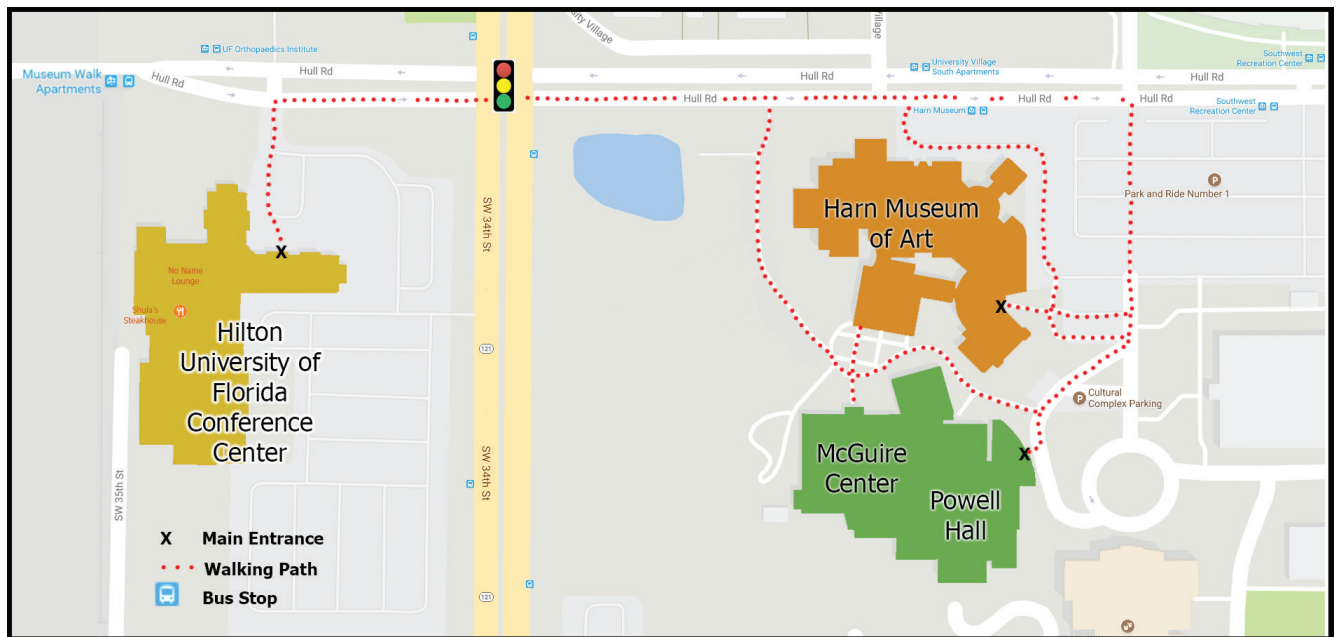
## Ground Transportation

There are bus stops near the Hilton and the museums. Bus routes 20, 21, 117, and 118 will take you to the center of campus (e.g., the collections at Dickinson Hall at the intersection of Museum Road and Newell Drive). Bus routes 117 and 118 are free; 20 and 21 are free with a Gator1 card or \$1.50 without. Real-time bus tracking is available at <https://ufl.transloc.com>.

Uber (<https://www.uber.com/cities/gainesville/>) and Lyft (<https://www.lyft.com/cities/gainesville-fl>) are also available in the Gainesville area.

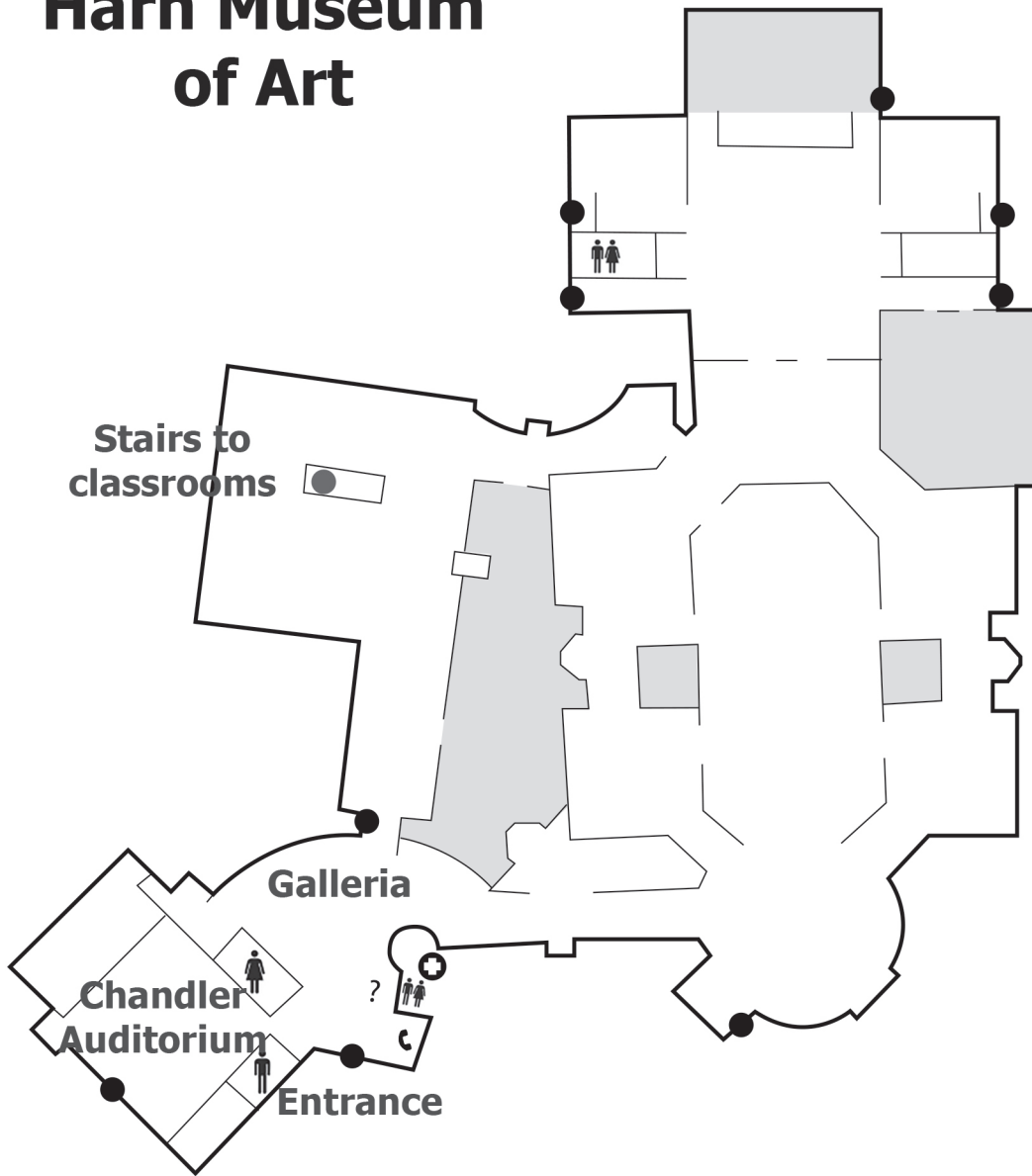
Luxury Cab Service LLC is a highly-rated local taxi service and be may be reached at 352.682.4019.

The Hilton has a shuttle service. If you need assistance getting from the Hilton to the Cultural Plaza, please contact the Hilton front desk at 352.371.3600. The Hilton will provide shuttle service to and from the airport if arranged in advance.



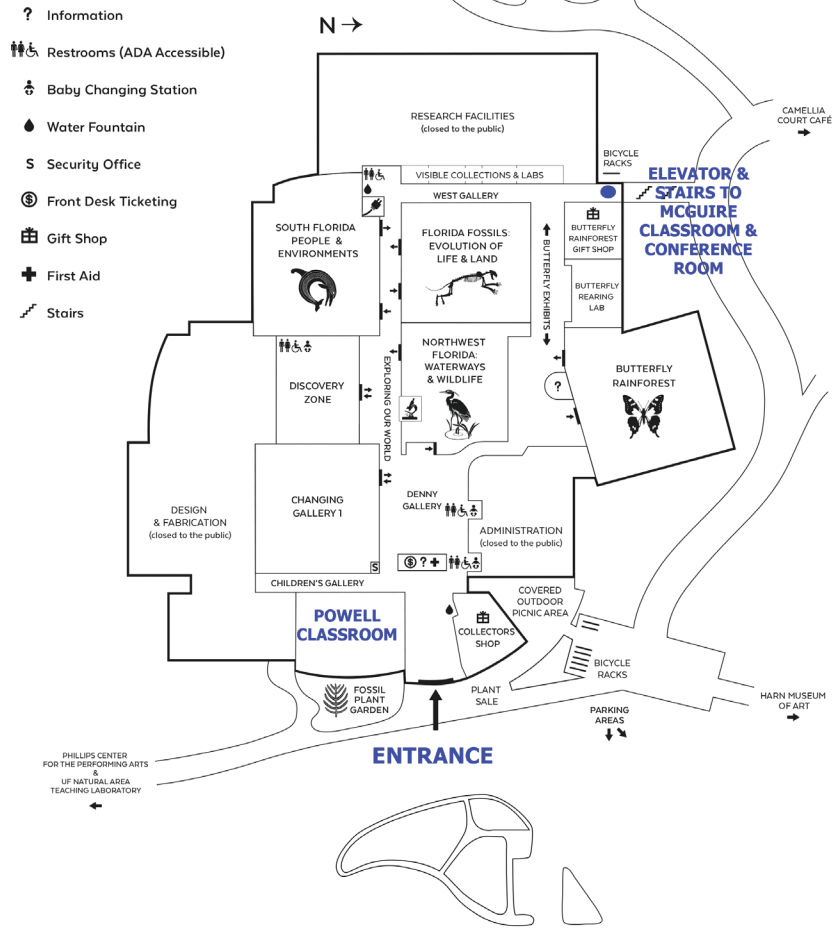


# Harn Museum of Art

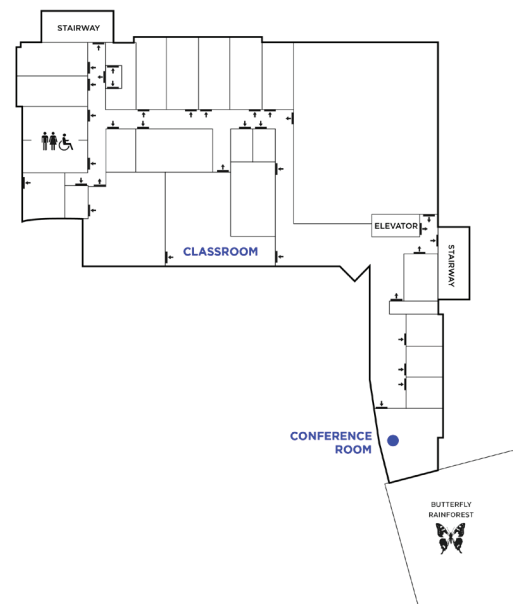




# Powell/McGuire Map



MCGUIRE CENTER  
2ND FLOOR



Note: Access to the McGuire 2nd floor is restricted. To access, please go to the front desk of Powell Hall or seek assistance from iDigBio staff.



### Wednesday, November 1, 2017 - PreSummit Meetings

Time	Powell Classroom	McGuire Classroom	McGuire Conference Room
8:00 - 10:00		<b>iDigBio-GBIF Whiteboarding Session on Worldwide Collections-Level Data</b> [closed session]	<b>Open Meeting Space</b>
10:00 -10:30		Set up	
10:30- 12:00		<p><b>Orientation - Welcome to ADBC</b></p> <p>Join us for an iDigBio and ADBC orientation session where we will present information-fit-for-use about the following:</p> <ul style="list-style-type: none"> <li>• What ADBC and iDigBio are about, the acronyms, the scope</li> <li>• How you can fire up your involvement by participating in interest and working groups, community surveys, and useful website content</li> <li>• How to get specimen data to us, the first time and with every update</li> <li>• Ways to interact with us - listservs, meet the staff</li> <li>• Forum for suggestions to make all of this better</li> </ul> <p>Everyone is welcome! Come to learn, to refresh, to meet your fellow digitizers!</p>	
12:00 - 1:00	<b>Lunch on your own</b>		
12:30 - 1:00		Setup	Setup
1:00 - 5:00		<b>oVert TCN Kickoff Meeting</b>	<b>iDigBio External Advisory Board</b> [closed session]
6:30 - 9:30	<b>Informal welcome and meet &amp; greet with iDigBio staff in the No Name Lounge inside the Hilton</b>		
Evening	<b>Dinner on your own</b>		



**Thursday, November 2, 2017 - Summit Day 1**

Time	Harn Galleria	Harn Auditorium	Harn Classroom 1
8:00 - 9:00			
9:00 - 9:30	Check-in Coffee Networking		
9:30 - 9:45		<b>Opening &amp; Welcome</b> - Larry Page	
9:45 - 9:55		<b>Logistics</b> - David Jennings	
9:55 - 10:10		<b>ADBC Program Update</b> - Reed Beaman	
10:10 - 10:20		<b>2017 TCNs</b>	
10:20 - 10:35		<b>2016 TCNS</b>	
10:35 - 10:55	Morning Break	<b>Open Meeting Space</b> (No food allowed)	
10:55 - 11:05		<b>2015 TCNs</b>	
11:05 - 11:20		<b>2014 TCNs</b>	
11:20 - 11:35		<b>2013 TCNs</b>	
11:35 - 11:55		<b>2012 TCNs</b>	
11:55 - 12:10		<b>2011 TCNs</b>	
12:10 - 1:15		<b>Open Meeting Space</b> (No food allowed)	<b>Box lunch provided</b>
1:15 - 2:30		<b>Group Discussion: Data Integration, attribution and interoperability</b> Andy Bentley, Robert Gropp	
2:30 - 3:00		<b>Open Meeting Space</b> (No food allowed)	<b>Afternoon break</b>
3:00 - 4:15		<b>Meeting of the Symbiota Working Group</b> Neil Cobb, Andy Miller	<b>WeDigBio Planning Meeting</b> Austin Mast
4:15 - 4:30		Transition	
4:30 - 5:00		<b>Day 1 Wrap-up</b> - Shari Ellis	
5:00 - 6:30			
6:30 - 9:30	<p><b>Reception at the Florida Museum</b> Heavy hors d'oeuvres, cash bar</p> <p>Welcome by Roland Roberts, NSF Program Director and BIO Centers Science Advisor Presentation on the museum's 100th Anniversary by David Reed, Chair of the Florida Museum Department of Natural History Museum exhibits open for your enjoyment</p>		





Harn Classroom 2	Powell Classroom	McGuire Classroom	McGuire Conference Room	Time
		Review of iDigBio in Supporting Thematic Collections Networks Neil Cobb		8:00 - 9:00
Box lunch provided			Open Meeting Space	12:10 - 1:15
Afternoon break				2:30 - 3:00
Legal Issues with Collections Linda S. Ford	oVert/MorphoSource Working Group David Blackburn	Meeting of the iDigBio Student Group Adania Flemming	Open Meeting Space	3:00 - 4:15
			iDigBio meeting with NSF (Closed meeting)	5:00 - 6:30



**Friday, November 3, 2017 - Summit Day 2**

Time	Harn Galleria	Harn Auditorium	Harn Classroom 1
9:00 - 9:20	Check-in Coffee Networking		
9:20 - 9:30	Logistics		
9:30 - 10:10		<b>Demo Camp</b> GUODA/iDigBio JupyterHub Matt Collins	
10:10 - 10:25	Morning Break	<b>Open Meeting Space</b> [No food allowed]	
11:02:5 - 12:30		<b>Demo Camp continued</b> MorphoSource - Julie Winchester Taxon Works - Matt Yoder OntoPilot - Brian Stucky Index Herbariorum - Barbara Thiers	
12:30 - 1:30		<b>Open Meeting Space</b> [No food allowed]	<b>Box lunch provided</b>
1:30 - 3:15		<b>Building a Local Carpentries Community</b> Matt Collins, Deborah Paul	<b>Broadening Participation &amp; Biodiversity Literacy in Undergraduate Education (BLUE)</b> Anna Monfils, Molly Phillips, Libby Ellwood
3:15 - 3:30		Transition to auditorium for wrap-up	
3:30 - 4:00		<b>Summit Wrap-up</b> Gil Nelson	
4:00 - 5:45	<b>Natural History Seminar at the Harn Chandler Auditorium</b>  “The Digital Atlas of Ancient Life” presented by Jonathan Hendricks Paleontological Research Institution (Ithaca, NY)  Co-sponsored by the FOSSIL Project/myFOSSIL, Paleontological Society, iDigBio, and the Florida Museum’s Department of Natural History		



Harn Classroom 2	Powell Classroom	McGuire Classroom	McGuire Conference Room	Time
	<b>Workshop on Collections Data in Ecological and Conservation Research</b> Libby Ellwood, Chrissy Alba...	<b>Changes/Improvements to the iDigBio portal</b> Richard Garand, Joanna McCaffrey, Shari Ellis	<b>Rapid digitization of incoming insect material</b> Neil Cobb, Crystal Maier, Jen Zaspel	9:30 - 10:10
	Morning Break	Morning Break	<b>Open meeting space</b>	10:10 - 10:25
	<b>Workshop continued</b> & Deborah Paul, Anna Monfils, Larry Page	<b>iDigPaleo Meeting</b> Talia Karim		10:25 - 12:30
<b>Box lunch provided</b>	<b>Open meeting space</b>	<b>Open meeting space</b>		12:30 - 1:30
<b>iDigBio Office "Hour"</b> Shari Ellis	<b>Specify Meeting</b> Andy Bentley	<b>Open meeting space</b>		1:30 - 3:15
				3:15 - 4:00
				4:00 - 5:45

## Nearby Restaurants

### Shula's Steakhouse (in the Hilton)

<https://www.shulas.com/shulas-steak-house/gainesville/>

### Camelia Court Cafe (in the Harn Museum of Art - lunch only)

<http://harn.ufl.edu/visit/cafe>

### Metro Dinner (0.3 miles)

<https://metrodiner.com/>  
2130 SW 34th St.; 352.353.2889

### Chuy's (0.7 miles)

<https://www.chuys.com/locations/florida/gainesville>  
3410 SW Archer Road; 352. 373.2480

### Mi Apá Latin Café (1.0 mile)

<http://www.miapalatincafe.com/>  
114 SW 34th St. (Westgate Regency Shopping Center); 352.376.7020

### PDQ (1.1 miles)

<https://www.eatpdq.com/>  
3403 W. University Avenue; 352.353.0100

### 4 Rivers Smokehouse (1.1 miles)

<https://4rsmokehouse.com/>  
3262 SW 35th Blvd; 844.474.8377

### Bonefish Grill (1.1 miles) (dinner only)

<https://www.bonefishgrill.com/>  
3237 SW 35th Blvd; 352.377.8383

### New Deal Cafe (1.2 miles)

<http://www.thenewdealcafegainesville.com/>  
3443 West University Ave (Westgate Regency Shopping Center); 352.371.4418

### Mildred's Big City Food (1.2 miles)

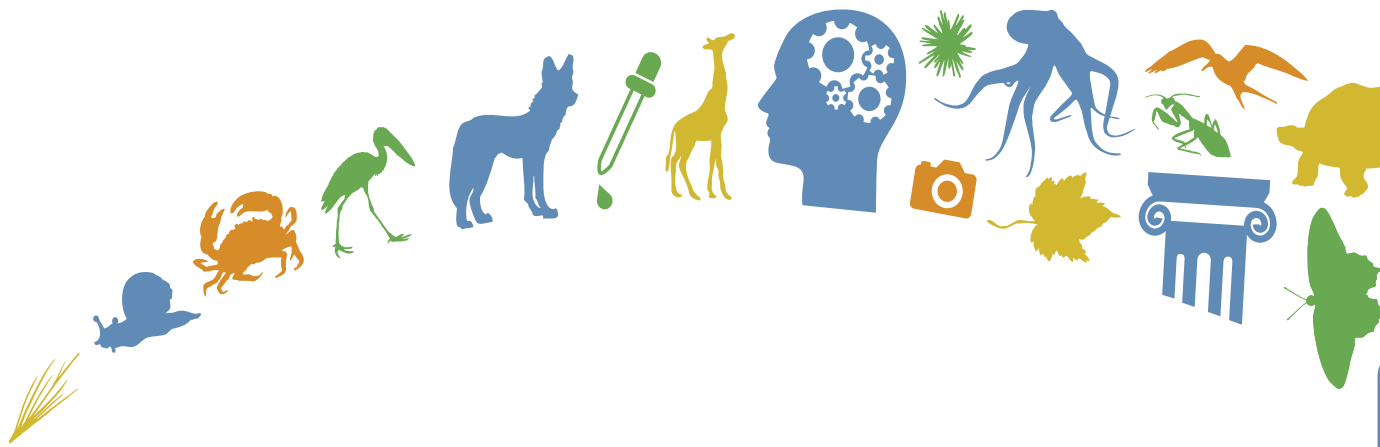
<http://www.mildredsbigcityfood.com/>  
3445 West University Ave (Westgate Regency Shopping Center); 352.371.1711

### Zoë's Kitchen (1.2 miles)

<https://zoeskitchen.com/locations/store/fl/gainesville>  
3730 SW Archer Rd; 352.363.6090

Or order a delivery from a wide variety of Gainesville restaurants at  
<https://www.bitesquad.com/gainesville-restaurant-delivery/>

## Notes



iDigBio is funded by a grant from the National Science Foundation's Advancing Digitization of Biodiversity Collections Program (Cooperative Agreement EF-1115210). Any opinions, findings, and conclusions or recommendations expressed in this material are those of the author(s) and do not necessarily reflect the views of the National Science Foundation.