

AN INSIGHT ABOUT SPECIES TURNOVER FROM BAT SPECIES RECORDS ON SIBERUT ISLANDS, INDONESIA

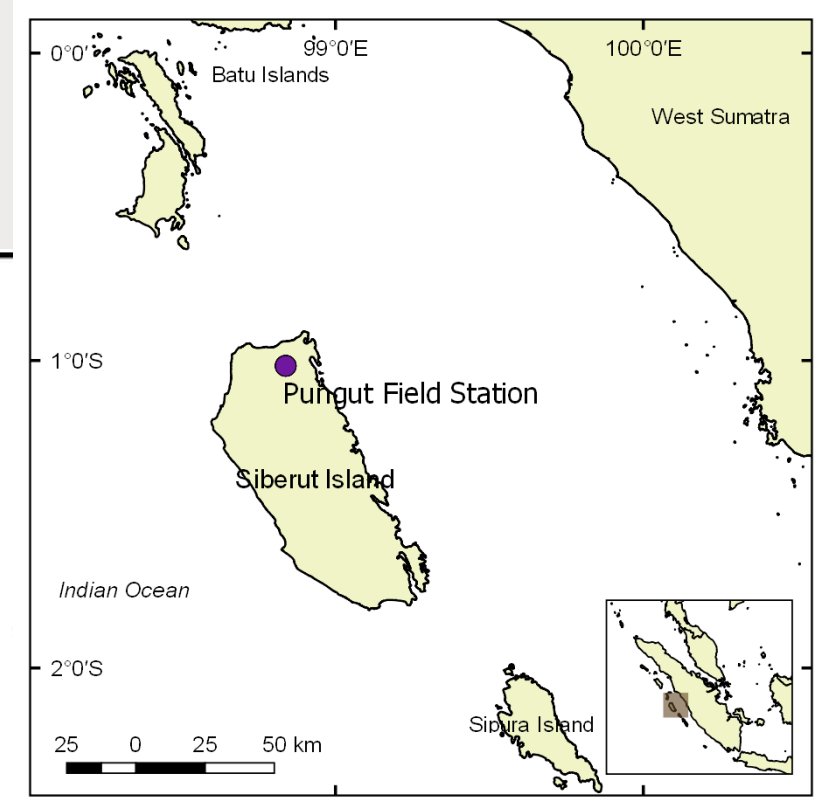
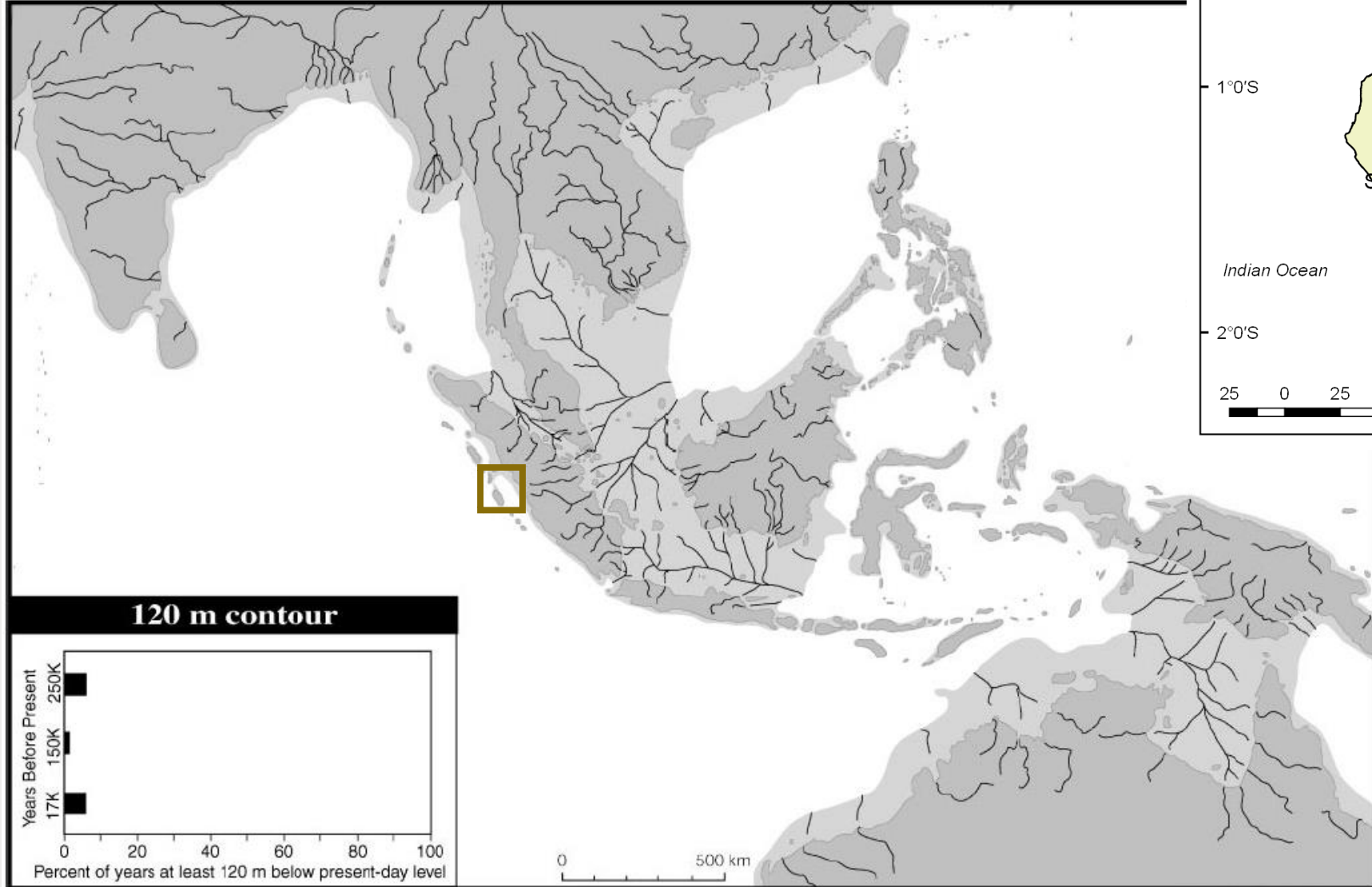
Aninta SG^{1*}, Noerfahmy S², Wiantoro S³, and Iskandar DT¹

¹Sekolah Ilmu dan Teknologi Hayati, Institut Teknologi Bandung, Indonesia

²Fauna & Flora International – Indonesia Programme, Jakarta, Indonesia

³Museum Zoologicum Bogoriense, Bogor, LIPI, Indonesia

Introduction



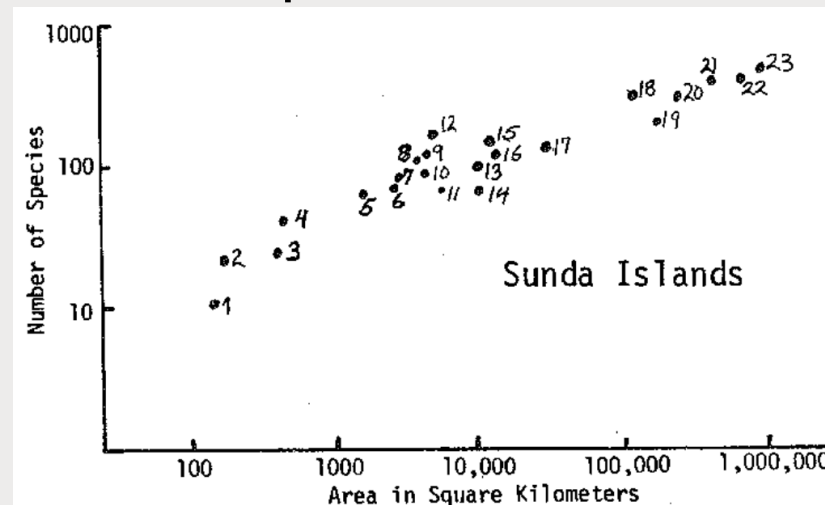
Voris (2000)

Introduction

10	No	Spesies	Expected	Observed
11	9	<i>Kerivoula papillosa</i> ^a	x	x
12	10	<i>Kerivoula pellucida</i>		x
13	11	<i>Macroglossus sobrinus</i> ^{a,d}	x	x
14		<i>Macroglossus minimus</i> ^a	x	
15	12	<i>Megaderma spasma</i> ^{a,c,d}	x	x
16	13	<i>Murina suilla</i>		x
17	14	<i>Myotis ater</i> ^b	x	
18	15	<i>Myotis hasseltii</i>	x	
19	16	<i>Myotis muricola</i> ^{c,d}	x	x
20	18	<i>Philetor brachyotis</i>		x

Island	Area (km ²)	Species Number	
		Before Study	After Study
Siberut	3.828,5	16	22
Sumatera	443.065,8	72	88

Species vs Area :



(MacArthur & Wilson, 1967)

Introduction

10	No	Spesies	Expected	Observed
11	9	<i>Kerivoula papillosa</i> ^a	x	x
12	10	<i>Kerivoula pellucida</i>		x
13	11	<i>Macroglossus sobrinus</i> ^{a,d}	x	x
14		<i>Macroglossus minimus</i> ^a	x	
15	12	<i>Megaderma spasma</i> ^{a,c,d}	x	x
16	13	<i>Murina suilla</i>		x
17	14	<i>Myotis ater</i> ^b	x	
18	15	<i>Myotis hasseltii</i>	x	
19	16	<i>Myotis muricola</i> ^{c,d}	x	x
20	18	<i>Philetor brachyotis</i>		x

Island	Area (km ²)	Species Number	
		Before Study	After Study
Siberut	3.828,5	16	22
Sumatera	443.065,8	72	88

Acta Chiropterologica, 16(2): 413–449, 2014
 PL ISSN 1508-1109 © Museum and Institute of Zoology PAS
 doi: 10.3161/150811014X687369



A recent bat survey reveals Bukit Barisan Selatan Landscape as a chiropteran diversity hotspot in Sumatra

JOE CHUN-CHIA HUANG^{1,2}, ELLY LESTARI JAZDZYK³, MEYNER NUSALAWO⁴, IBNU MARYANTO^{2,5}, MAHARADATUNKAMSI⁵, SIGIT WIANTORO^{2,5}, and TIGGA KINGSTON^{1,2,6}

¹Department of Biological Sciences, Texas Tech University, Lubbock, TX, USA

²Southeast Asian Bat Conservation Research Unit, Lubbock, TX, USA

³Department of Biology, College of Mathematics and Natural Science, University of Lampung, Bandar Lampung, Indonesia

⁴Wildlife Conservation Society-Indonesian Program, Bogor, Indonesia

⁵Museum Zoologicum Bogoriense, Lembaga Ilmu Pengetahuan Indonesia, Bogor, Indonesia

⁶Corresponding author: E-mail: tigga.kingston@ttu.edu

Bukit Barisan Selatan National Park is one of the last refuges protecting intact forest and a representative mammalian fauna in Sumatra. However, knowledge of bat diversity in the area is limited. From 2010 to 2012, 47 bat species were recorded through a series of surveys in 12 localities within and around the national park. An additional six species from the area were identified from the mammal collection of the Museum Zoologicum Bogoriense, Indonesia. At least seven of the species reported in this study are new records for Sumatra, including *Kerivoula krauensis*, *K. lenis*, *K. minuta*, *Murina rozeadaali*, *Myotis horsfieldii*, *Myotis cf. borneensis*, and *Rhinolophus borneensis/celebensis*. Moreover, a finding of two distinct morphs of *Chironax melanocephalus* coexisting in the study area indicates another possible undescribed species. With 60 species, we consider Bukit Barisan Selatan Landscape to be a Southeast Asian bat diversity hotspot and of critical importance in maintaining bat diversity in Sumatra.

Key words: Chiroptera, new record, lowland rainforest, Indonesia, identification keys, coffee agriculture



IS THE SPECIES NUMBER FIXED?

How did species assemblage change over time?

Methods

MAMMALS COLLECTED BY DR. W. L. ABBOTT ON THE CHAIN OF ISLANDS LYING OFF THE WESTERN COAST OF SUMATRA, WITH DESCRIPTIONS OF TWENTY-EIGHT NEW SPECIES AND SUBSPECIES.

By MARCUS WARD LYON, JR.,
Of George Washington University, Washington, D. C.

INTRODUCTION.

Between the years 1901 and 1905 Dr. W. L. Abbott, in his zoological explorations of the Malay Archipelago, visited the chain of islands lying off the southern and western coast of Sumatra three times. On these expeditions he collected over 800 specimens of mammals, all of which were presented to the United States National Museum. No

460 PROCEEDINGS OF THE NATIONAL MUSEUM. VOL. 52.

SIBERUT ISLAND.

January 22, 1903.

Emballonura monticola Temminck.

41. *Spolia Mentawiensia*.—Mammals. By F. N. CHASEN, C.M.Z.S., and C. BODEN KLOSS, F.Z.S. With an Introduction by C. BODEN KLOSS.

[Received July 30, 1927; Read November 16, 1927.]

(Plates I.-V. and Map *.)

CONTENTS.

	Page
I. Introduction	707
II. Systematic	808
III. Account of the Collection	808

25. *PTEROPUS HYPOMELANUS ENGANUS* Miller.

Pteropus enganus Miller, Proc. U.S. Nat. Mus. xxx. 1906, p. 822: Engano.

Pteropus hypomelanus Thomas, 1895, p. 664.

Sipora: 4 ♂, 5 ♀.

Siberut: 1 ♂.

The measurements of this series agree closely with those given by Andersen (Cat. Chir. Brit. Mus. 1912, pp. 108 and 112) or *enganus*, forearm 121-133.5 mm. Furthermore, we have examined two topotypes of *enganus*, and although these are not in the best of condition, we can perceive no difference between them and the Mentawi material.

Gambar 31. *Endemisme mammalia Mentawai*, didasarkan pada Chasen dan Kloss, 1927; Hill, 1961 dan komunikasi pribadi; Groves, kom.pri. (?=statusnya belum ditentukan).
Figure 31. *Endemism of Mentawai mammals*, based on Chasen and Kloss, 1927; Hill, 1961 and pers.com.; and Groves, pers. comm. (? = status undetermined)

Species Tingkat Endemisme/Level of Endemism
Genus Species Subspecies None

SERANGGA/INSECTIVORES
Tupaia glis siberu ♂
Ptilocoerous looffi continentis ♂

KALONG/BATS
Pteropus hypomelanus enganus ♂
Pteropus vampyrus malacensis ♂
Cynopterus sphinx angulatus ♂
Macroglossus sobrinus fraternus ♂
Neodermis aevansi sp. ?

Identifikasi	Spesies	Location	Recorded By	Sex	Date	Map	Media
NHARJAZ 1978-2914	Mammalia: Cynopterus sphinx angulatus	Indonesia: Siberut Island		female	1978-05-07		
NHARJAZ 1978-2920	Mammalia: Cynopterus sphinx angulatus	Indonesia: Siberut Island		male	1977-05-25		
NHARJAZ 1978-2921	Mammalia: Macroglossus sobrinus fraternus	Indonesia: Siberut Island		female	1977-12-12		
NHARJAZ 1978-2932	Mammalia: Myotis muricola abboti	Indonesia: Siberut Island		female	1978-05-12		
USNM Mammals 121879/7245037	Mammalia: Emballonura monticola	Indonesia, Sumatera Barat: Siberut Island	W. Abbott	Male			
USNM Mammals 252476/7207051	Mammalia: Cynopterus sphinx angulatus	Indonesia: Siberut Island	W. Abbott	Male			

Date	From	Locality, Detail	Desa	Kecamatan	Family	Genus	Species
19/06/1995	Taleku	Siberut Selatan, Kab. Padang Pariaman, Sumatera Barat	Desa Taleku	Siberut Barat Daya	Pteropodidae	Cynopterus	brachyotus
25/06/1995	Taleku	Siberut Selatan, Kab. Padang Pariaman, Sumatera Barat	Desa Taleku	Siberut Barat Daya	Pteropodidae	Macroglossus	sobrinus sobrinus
13/06/1994	Ialeu, Bekelu, Sempala	Siberut Selatan, Sumatera Barat			Cynopterus	brachyotus	
28/06/1993	Medabab, P. Siberut, Sumbur		Desa Madabab	Siberut Selatan	Pteropodidae	Macroglossus	sobrinus sobrinus
11/08/1979	Muasra Siberut		Desa Muasra Siberut	Siberut Selatan	Rhinopodidae	Rhinolophus	sp.
08/12/1991	PASAKATI, SIBERUT		Desa Muntei	Siberut Selatan	Pteropodidae	Rousettus	sp.
07/12/1993	Sikabau, P. Siberut, Sumbur		Desa Muasra Siberut	Siberut Selatan	Pteropodidae	Macroglossus	sobrinus sobrinus
09/10/1991	SINABAS, SIBERUT		Desa Malekpepi	Siberut Selatan	Pteropodidae	Rousettus	sp.
04/04/2008	Bukau Batu, Durian Titi, Desa Sigapokina, Kec. Siberut Utara, Kab. Mentawai, Prov. Sumatra Barat		Desa Sigapokina	Siberut Utara	Emballonuridae	Emballonura	monticola
10/04/2008	Dusun Titi, Desa Sigapokina, Kec. Siberut Utara, Kab. Mentawai, Prov. Sumatra Barat		Desa Sigapokina	Siberut Utara	Vesperilionidae	Kenivoula	papillosa
29/03/2008	Dusun Titi, Desa Sigapokina, Kec. Siberut Utara, Kab. Mentawai, Prov. Sumatra Barat		Desa Sigapokina	Siberut Utara	Vesperilionidae	Kenivoula	hardwickii
06/06/1994	Dusun Titi, Siberut Utara, Kab. Pariaman, Sumatera Barat		Desa Sigapokina	Siberut Utara	Pteropodidae	Macroglossus	sobrinus sobrinus
05/06/1994	Gua Suraui, Titi, Siberut Utara, Sumatera Barat		Desa Sigapokina	Siberut Utara	Emballonuridae	Emballonura	monticola
03/09/2013	Jalan ke ladang, Dusun Potopoman, Desa Sigapokina, Kec. Siberut Utara, Kab. Mentawai, Prov. Sumatra Barat		Desa Sigapokina	Siberut Utara	Pteropodidae	Cynopterus	sphinx
08/04/2008	Km 4, Dusun Titi, Desa Sigapokina, Kec. Siberut Utara, Kab. Mentawai, Prov. Sumatra Barat		Desa Sigapokina	Siberut Utara	Pteropodidae	Cynopterus	sphinx
23/05/1994	P. Nanggareh Malacan, Siberut Utara, SUMBAR		Desa Molacan	Siberut Utara	Pteropodidae	Cynopterus	brachyotus
31/03/2008	Rawa atoban, Dusun Titi, Desa Sigapokina, Kec. Siberut Utara, Kab. Mentawai, Prov. Sumatra Barat		Desa Sigapokina	Siberut Utara	Pteropodidae	Cynopterus	sphinx
06/06/1994	S. Likonon, Titi, Siberut Utara, Sumatera Barat		Desa Sigapokina	Siberut Utara	Pteropodidae	Cynopterus	brachyotus
03/09/2013	Stasiun Perencanaan Pungut, Dusun Potopoman, Desa Sigapokina, Kec. Siberut Utara, Kab. Mentawai, Prov. Sumatra Barat		Desa Sigapokina	Siberut Utara	Pteropodidae	Cynopterus	sphinx
03/09/2013	Stasiun Perencanaan Pungut, Dusun Potopoman, Desa Sigapokina, Kec. Siberut Utara, Kab. Mentawai, Prov. Sumatra Barat		Desa Sigapokina	Siberut Utara	Megadermatidae	Megaderma	spasma
04/09/2013	Stasiun Perencanaan Pungut, Dusun Potopoman, Desa Sigapokina, Kec. Siberut Utara, Kab. Mentawai, Prov. Sumatra Barat		Desa Sigapokina	Siberut Utara	Pteropodidae	Cynopterus	brachyotus
09/09/2013	Stasiun Perencanaan Pungut, Dusun Potopoman, Desa Sigapokina, Kec. Siberut Utara, Kab. Mentawai, Prov. Sumatra Barat		Desa Sigapokina	Siberut Utara	Vesperilionidae	Kenivoula	papillosa
11/09/2013	Stasiun Perencanaan Pungut, Dusun Potopoman, Desa Sigapokina, Kec. Siberut Utara, Kab. Mentawai, Prov. Sumatra Barat		Desa Sigapokina	Siberut Utara	Pteropodidae	Macroglossus	sobrinus sobrinus
18/09/2013	Stasiun Perencanaan Pungut, Dusun Potopoman, Desa Sigapokina, Kec. Siberut Utara, Kab. Mentawai, Prov. Sumatra Barat		Desa Sigapokina	Siberut Utara	Vesperilionidae	Kenivoula	hardwickii
18/09/2013	Stasiun Perencanaan Pungut, Dusun Potopoman, Desa Sigapokina, Kec. Siberut Utara, Kab. Mentawai, Prov. Sumatra Barat		Desa Sigapokina	Siberut Utara		Murina	zulla
19/09/2013	Stasiun Perencanaan Pungut, Dusun Potopoman, Desa Sigapokina, Kec. Siberut Utara, Kab. Mentawai, Prov. Sumatra Barat		Desa Sigapokina	Siberut Utara		Phylotis	brachypterus
23/09/2013	Stasiun Perencanaan Pungut, Dusun Potopoman, Desa Sigapokina, Kec. Siberut Utara, Kab. Mentawai, Prov. Sumatra Barat		Desa Sigapokina	Siberut Utara		Myotis	muricola
26/09/2013	Stasiun Perencanaan Pungut, Dusun Potopoman, Desa Sigapokina, Kec. Siberut Utara, Kab. Mentawai, Prov. Sumatra Barat		Desa Sigapokina	Siberut Utara		Kenivoula	pellucidola
18/10/2013	Stasiun Perencanaan Pungut, Dusun Potopoman, Desa Sigapokina, Kec. Siberut Utara, Kab. Mentawai, Prov. Sumatra Barat		Desa Sigapokina	Siberut Utara	Emballonuridae	Emballonura	monticola
22/05/1994	Talikan Kuku, Siberut Utara, Kab. Pariaman, Sumatera Barat		Desa Molacan	Siberut Utara	Pteropodidae	Cynopterus	brachyotus
05/04/2008	Titi Base Camp, Dusun Titi, Desa Sigapokina, Kec. Siberut Utara, Kab. Mentawai, Prov. Sumatra Barat		Desa Sigapokina	Siberut Utara	Pteropodidae	Cynopterus	sphinx
06/04/2008	Titi Base Camp, Dusun Titi, Desa Sigapokina, Kec. Siberut Utara, Kab. Mentawai, Prov. Sumatra Barat		Desa Sigapokina	Siberut Utara	Pteropodidae	Cynopterus	sphinx
05/06/1994	Titi, Siberut Utara, Sumatera Barat		Desa Sigapokina	Siberut Utara	Hippodermidae	Hippodermis	dyacorum
04/06/1970	Saraha S. Siberut, Mentawai				Pteropodidae	Macroglossus	nirinus
11/06/1970	Saraha S. Siberut, Mentawai				Pteropodidae	Cynopterus	brachyotus
01/01/1976	Siberut, Mentawai, V. Sumatera				Megadermatidae	Megaderma	spasma

1903

1920

1970

1990

2013

Methods

MAMMALS COLLECTED BY DR. W. L. ABBOTT ON THE CHAIN OF ISLANDS LYING OFF THE WESTERN COAST OF SUMATRA, WITH DESCRIPTIONS OF TWENTY-EIGHT NEW SPECIES AND SUBSPECIES.

By MARCUS WARD LYON, JR.,

Of George Washington University, Washington, D. C.

INTRODUCTION.

Between the years 1901 and 1905 Dr. W. L. Abbott, in his zoological explorations of the Malay Archipelago, visited the chain of islands lying off the southern and western coast of Sumatra three times. On these expeditions he collected over 800 specimens of mammals, all of which were presented to the United States National Museum. No

1903
SIBERUT ISLAND.
January 22, 1903.

Emballonura monticola Temminck.

41. *Spolia Mentawiensia*.—Mammals. By F. N. CHASEN, C.M.Z.S., and C. BODEN KLOSS, F.Z.S. With an Introduction by C. BODEN KLOSS.

[Received July 30, 1927; Read November 16, 1927.]

(Plates I.-V. and Map *.)

CONTENTS.

	Page
I. Introduction	707
II. Systematic	808
III. Account of the Collection	808

PTEROPUS HYPMELANUS ENGANUS Miller.

Pteropus enganus Miller, Proc. U.S. Nat. Mus. xxx. 1906, p. 822: Engano.

Pteropus hypmelanus Thomas, 1895, p. 664.

Sipora: 4 ♂, 5 ♀.

Siberut: 1 ♂.

The measurements of this series agree closely with those given by Andersen (Cat. Chir. Brit. Mus. 1912, pp. 108 and 112) or *enganus*, forearm 121-133.5 mm. Furthermore, we have examined two topotypes of *enganus*, and although these are not in the best of condition, we can perceive no difference between them and the Mentawi material.

Gambar 31. Endemisme mamalia Mentawai, didasarkan pada Chasen dan Kloss, 1927; Hill, 1961 dan komunikasi pribadi; Groves, kom.pri. (?statusnya belum ditentukan).
Figure 31. Endemism of Mentawai mammals, based on Chasen and Kloss, 1927; Hill, 1961 and pers.com.; and Groves, pers. comm. (? = status undetermined)

Species	Tingkat Endemisme/Level of Endemism		
	Genus	Species	Subspecies
<i>SERANGGA/INSECTIVORES</i>			
<i>Tupaia glis siberu</i>			z
<i>Ptilocoerus looffi continentis</i>			z

KALONG/BAYS

Pteropus hypmelanus enganus z

Pteropus vampyrus malacensis z

Cynopterus sphinx angulatus

Macroglossus sobrinus fraternus

Neodermis swamsi sp.

Identification	Sex	Date	Map	Measure
NMUK.ZOO.1978.2914	male	1978-05-07		
NMUK.ZOO.1978.2920	male	1977-05-25		
NMUK.ZOO.1978.2921	female	1977-12-12		
NMUK.ZOO.1978.2932		1978-05-12		
USNM Mammals 121879.7245037				
USNM Mammals 232476.7207031	W. Abbott			

Date	From	Locality	Detail	Desa	Kecamatan	Family	Genus	Species
19/06/1995	Taleku, Siberut Selatan, Kab. Padang Pariaman, Sumatera Barat	Desa Taleku	Siberut Barat Daya	Desa Taleku	Siberut Barat Daya	Pteropidae	Cynopterus	brachyotis
25/06/1995	Taleku, Siberut Selatan, Kab. Padang Pariaman, Sumatera Barat	Desa Taleku	Siberut Barat Daya	Desa Taleku	Siberut Barat Daya	Pteropidae	Macroglossus	sobrinus sobrinus
13/06/1994	Ialeo, Bekelu, Sembela, Siberut Selatan, Sumatera Barat		Siberut Selatan		Siberut Selatan	Pteropidae	Cynopterus	brachyotis
28/06/1993	Medabab, P. Siberut, Sumbur		Siberut Selatan		Siberut Selatan	Pteropidae	Macroglossus	sobrinus sobrinus
11/08/1979	Muara Siberut		Siberut Selatan		Siberut Selatan	Rhinopodidae	Rhinolophus	sp.
08/12/1991	PASAKAT, SIBERUT		Siberut Selatan		Siberut Selatan	Pteropidae	Rousettus	sp.
07/12/1993	Sikabu, P. Siberut, Sumbur		Siberut Selatan		Siberut Selatan	Pteropidae	Macroglossus	sobrinus sobrinus
08/10/1991	SINABAS, SIBERUT		Siberut Selatan		Siberut Selatan	Pteropidae	Rousettus	sp.
04/04/2008	Bukau Batu, Dusun Titi, Desa Sigapolima, Kec. Siberut Utara, Kab. Mentawai, Prov. Sumatra Barat		Siberut Utara		Siberut Utara	Emballonuridae	Emballonura	monticola
10/04/2008	Dusun Titi, Desa Sigapolima, Kec. Siberut Utara, Kab. Mentawai, Prov. Sumatra Barat		Siberut Utara		Siberut Utara	Vespertilionidae	Ferrelivora	paipalisa
29/03/2006	Dusun Titi, Desa Sigapolima, Kec. Siberut Utara, Kab. Mentawai, Prov. Sumatra Barat		Siberut Utara		Siberut Utara	Vespertilionidae	Ferrelivora	hardwickii
06/06/1994	Dusun Titi, Siberut Utara, Kab. Pariaman, Sumatera Barat		Siberut Utara		Siberut Utara	Pteropidae	Macroglossus	sobrinus sobrinus
05/06/1994	Gua Suroi, Titi, Siberut Utara, Sumatera Barat		Siberut Utara		Siberut Utara	Emballonuridae	Emballonura	monticola
09/09/1971	Jalan ke ladang, Dusun Polipoman, Desa Sigapolima, Kec. Siberut Utara, Kab. Mentawai, Prov. Sumatra Barat		Siberut Utara		Siberut Utara	Pteropidae	Cynopterus	sphinx
09/04/2005	Fin. H. Dusun Titi, Desa Sigapolima, Kec. Siberut Utara, Kab. Mentawai, Prov. Sumatra Barat		Siberut Utara		Siberut Utara	Pteropidae	Cynopterus	sphinx
23/05/1984	P. Nanggareh, Malacan, Siberut Utara, SUMBAR		Siberut Utara		Siberut Utara	Pteropidae	Cynopterus	brachyotis
31/03/2008	Plewa sibuan, Dusun Titi, Desa Sigapolima, Kec. Siberut Utara, Kab. Mentawai, Prov. Sumatra Barat		Siberut Utara		Siberut Utara	Pteropidae	Cynopterus	sphinx
05/05/1994	S. Lukuron, Titi, Siberut Utara, Sum		Siberut Utara		Siberut Utara	Pteropidae	Cynopterus	brachyotis
03/09/2013	Stasiun Penelitian Pungut, Dusun P		Siberut Utara		Siberut Utara	Pteropidae	Cynopterus	sphinx
03/09/2013	Stasiun Penelitian Pungut, Dusun P		Siberut Utara		Siberut Utara	Pteropidae	Cynopterus	brachyotis
03/09/2013	Stasiun Penelitian Pungut, Dusun P		Siberut Utara		Siberut Utara	Pteropidae	Cynopterus	brachyotis
04/09/2013	Stasiun Penelitian Pungut, Dusun Polipoman, Desa Sigapolima, Kec. Siberut Utara, Kab. Mentawai, Prov. Sumatra Barat		Siberut Utara		Siberut Utara	Pteropidae	Cynopterus	brachyotis
09/09/2013	Stasiun Penelitian Pungut, Dusun Polipoman, Desa Sigapolima, Kec. Siberut Utara, Kab. Mentawai, Prov. Sumatra Barat		Siberut Utara		Siberut Utara	Vespertilionidae	Ferrelivora	paipalisa
11/09/2013	Stasiun Penelitian Pungut, Dusun Polipoman, Desa Sigapolima, Kec. Siberut Utara, Kab. Mentawai, Prov. Sumatra Barat		Siberut Utara		Siberut Utara	Pteropidae	Macroglossus	sobrinus sobrinus
18/09/2013	Stasiun Penelitian Pungut, Dusun Polipoman, Desa Sigapolima, Kec. Siberut Utara, Kab. Mentawai, Prov. Sumatra Barat		Siberut Utara		Siberut Utara	Vespertilionidae	Ferrelivora	hardwickii
18/09/2013	Stasiun Penelitian Pungut, Dusun Polipoman, Desa Sigapolima, Kec. Siberut Utara, Kab. Mentawai, Prov. Sumatra Barat		Siberut Utara		Siberut Utara		Musina	saile
18/09/2013	Stasiun Penelitian Pungut, Dusun Polipoman, Desa Sigapolima, Kec. Siberut Utara, Kab. Mentawai, Prov. Sumatra Barat		Siberut Utara		Siberut Utara		Phylotis	brachypterus
23/09/2013	Stasiun Penelitian Pungut, Dusun Polipoman, Desa Sigapolima, Kec. Siberut Utara, Kab. Mentawai, Prov. Sumatra Barat		Siberut Utara		Siberut Utara		Mops	monticola
26/09/2013	Stasiun Penelitian Pungut, Dusun Polipoman, Desa Sigapolima, Kec. Siberut Utara, Kab. Mentawai, Prov. Sumatra Barat		Siberut Utara		Siberut Utara		Kerivora	paipalisa
18/10/2013	Stasiun Penelitian Pungut, Dusun Polipoman, Desa Sigapolima, Kec. Siberut Utara, Kab. Mentawai, Prov. Sumatra Barat		Siberut Utara		Siberut Utara	Emballonuridae	Emballonura	monticola
22/05/1984	Taleku, Siberut Selatan, Sumatera Barat		Siberut Selatan		Siberut Selatan	Pteropidae	Cynopterus	brachyotis
05/04/2006	Titi, Bako, Sembela, Siberut Selatan, Sumatera Barat		Siberut Selatan		Siberut Selatan	Pteropidae	Cynopterus	brachyotis
06/06/1984	Titi, Bako, Sembela, Siberut Selatan, Sumatera Barat		Siberut Selatan		Siberut Selatan	Pteropidae	Cynopterus	brachyotis
05/06/1984	Titi, Bako, Sembela, Siberut Selatan, Sumatera Barat		Siberut Selatan		Siberut Selatan	Hesperodidae	Hesperodidae	sp.
04/06/1970	Sarahan's, Siberut, Mentawai		Siberut Selatan		Siberut Selatan	Pteropidae	Macroglossus	brachyotis
11/06/1970	Sarahan's, Siberut, Mentawai		Siberut Selatan		Siberut Selatan	Pteropidae	Cynopterus	brachyotis
01/01/1976	Siberut, Mentawai, V. Sumatera		Siberut Selatan		Siberut Selatan	Megadermatidae	Megader	spasma

9 periods of exploration

Methods

Species	Year of Exploration								
	1903	1927	1978	1979	1980	1992	1995	2006	2013
<i>Cynopterus sphinx</i>		X	X		X	X		X	X
<i>Cynopterus brachyotis</i>				X			X		X
<i>Eonycteris spelaea</i>								X	



FAMILY/Species	Sb	Sm	Bn	Jv	My P.	Note	Similarity Matrix	
PTEROPODIDAE								Sb
<i>Aethalops alecto</i>		1	1	1	1			Sb
<i>Balionycteris maculata</i>		1	1	-	1			Sm 17
<i>Chironax melanocephalus</i>		1	1	1	1			Bn 17
<i>Cynopterus brachyotis</i> ^{**}	1	1	1	1	1			Jv 18
<i>Cynopterus horsfieldi</i>		1	1	1	1			My P. 18
<i>Cynopterus minutus</i>		1	1	1	-			
<i>Cynopterus sphinx</i>	1	1	-	1	1			

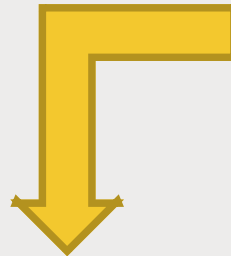


Methods

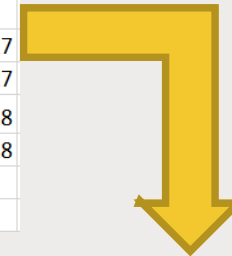
Species	Year of Exploration								
	1903	1927	1978	1979	1980	1992	1995	2006	2013
<i>Cynopterus sphinx</i>		X	X		X	X		X	X
<i>Cynopterus brachyotis</i>				X			X		X
<i>Eonycteris spelaea</i>								X	



FAMILY/Species	Sb	Sm	Bn	Jv	My P.	Note	Similarity Matrix	
PTEROPODIDAE								Sb
<i>Aethalops alecto</i>		1	1	1	1			Sb
<i>Balionycteris maculata</i>		1	1	-	1			Sm 17
<i>Chironax melanocephalus</i>		1	1	1	1			Bn 17
<i>Cynopterus brachyotis</i> ^{**}	1	1	1	1	1			Jv 18
<i>Cynopterus horsfieldi</i>		1	1	1	1			My P. 18
<i>Cynopterus minutus</i>		1	1	1	-			
<i>Cynopterus sphinx</i>	1	1	-	1	1			



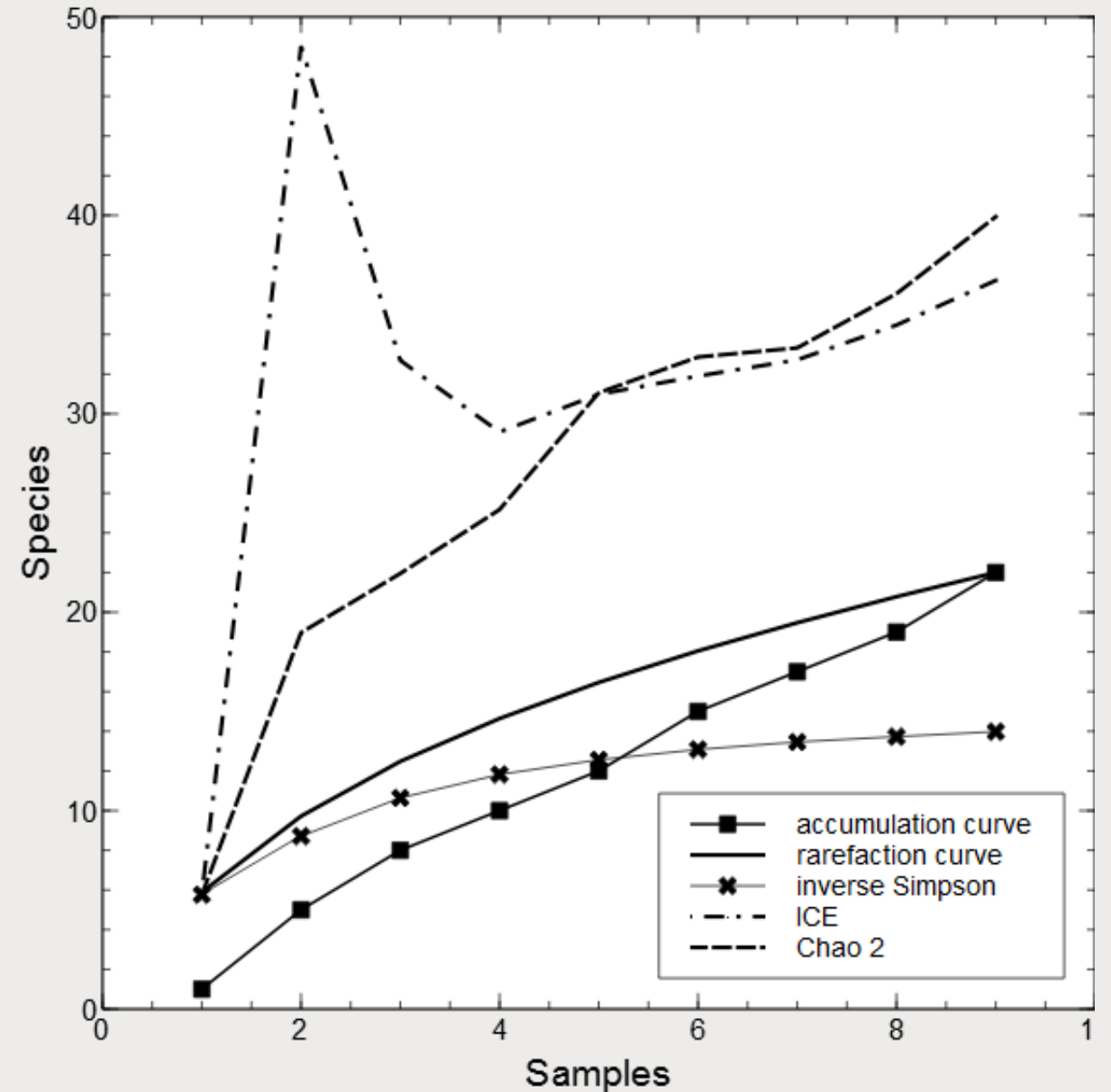
Species richness estimation



Species assemblage assessment
(turnover analysis)

Current cumulative species number is not fixed

However, museum collection data is not systematically assessed. This might lead to overestimation.

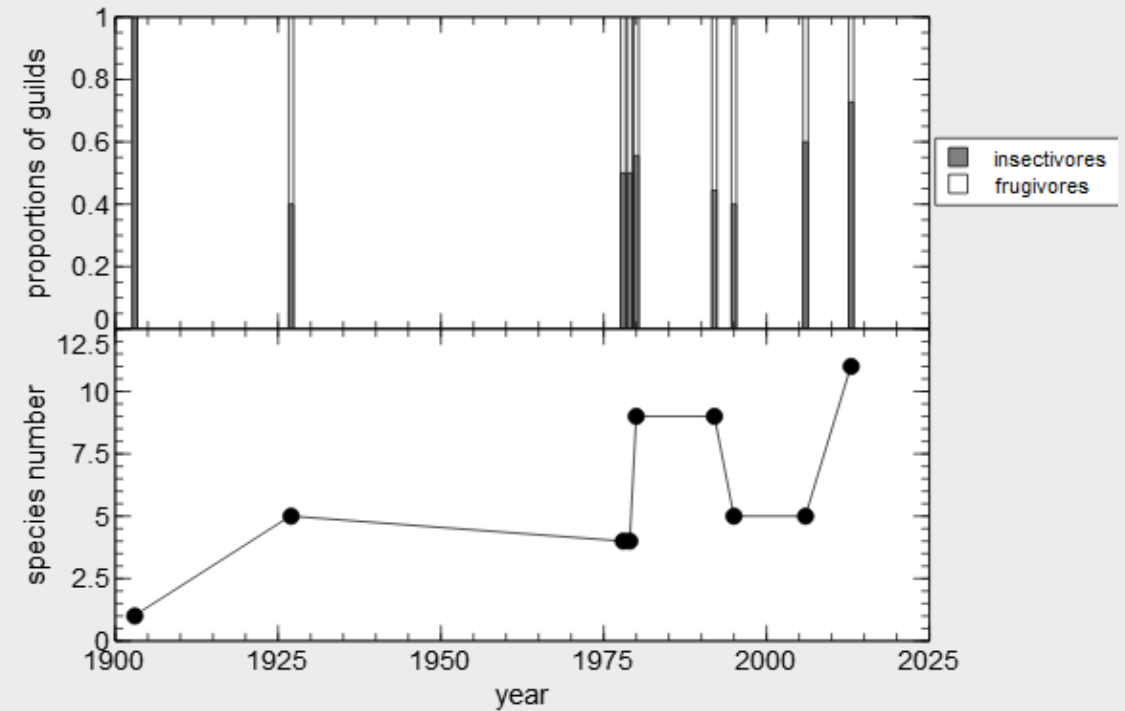
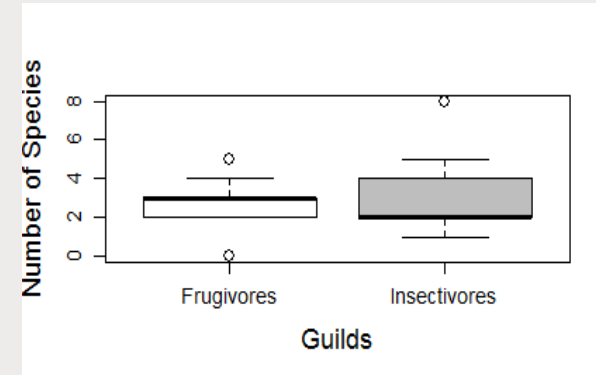


Aninta et al (in prep.)

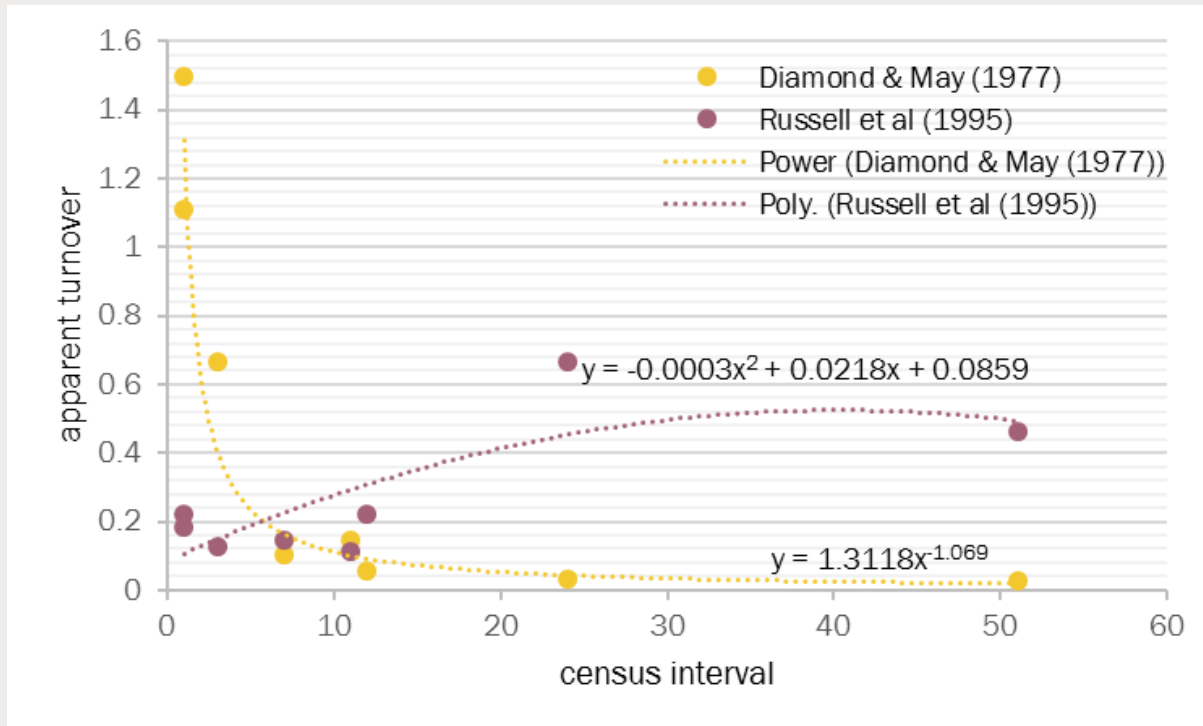
Number of species is not constant over time

However, it is not a systematic collection so I “calibrate” it by separating into two guilds.

There are no difference in guild proportion along the year
(Pearson’s Chi Squared test with simulated p-value, $p = 0.6658$)



How does the diversity pattern change over time?



turnover rate =

$$\frac{\text{number of extinctions} + \text{number of immigrations}}{\text{total number of species present} \times \text{census interval}}$$

Diamond & May (1977)

apparent turnover

$$T_n = \frac{E_n + I_n}{S_y + S_{y+n}}$$

Russell et al. (1995)

Museum records are prone to underestimate turnover, thus turnover should be measured with “similarity” instead of census interval

Aninta et al (in prep.)

Conclusions

- Species assemblage in tropical ecosystem may change over time
 - *Patterns of island diversity may depends on island type (volcanic, tectonic, land bridge, etc)*
 - *Space-based model is not enough to explain changes of diversity in biodiversity hotspot*
- Long term study of island species richness helps us evaluate conservation practices
 - *Analyses of museum collection dataset, particularly from understudied areas, requires special interpretation*

Acknowledgements

SCP Team

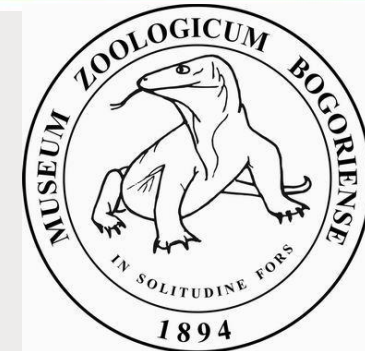
Dwi Yandhi Febriyanti, Agung Imansyah,
Mas Padhi, Bang Potan, Risel
Salamanang, Piator Salamanang,

MZB Mammal Lab

Kurnianingsih, Nanang Supriatna

My Colleagues

Martin Fisher, Susan Tsang,
Sheherazade, Katherine Wolcott
...and all of you for your attention!



Young Indonesian Conservationists Network