

Belau National Museum

“A Cherechar A Lokelii”



Biological Collections Digitization In the Pacific March 25, 2014



- Established in 1955
- Formerly Palau Museum.
- Incorporated in 1973 to become Belau National Museum.
- Governed by Nine board Members.
- Semi-Government Agency
- Oldest Museum in Micronesia.
- Moved in to New Building in in 2004 for 9th Festival of Pacific Arts.
- Building design like a canoe
- Yearly visitors around 20,000

Mission

In the belief that no song, no performance, no act of reation can be properly understood apart from the culture in which it is found and of which it is a part, the purpose of BNM as a major component of nation building is to identify, contextualize, create and record Palau's past and present through collection, identification, documentation, preservation and promotion, interpretation, education and research, and exhibition of cultural and natural property for the people of Palau.



Ethnographic Objects/Art Collection

Mission to collect and preserve objects and works of art that are relevant to the purpose of the Belau National Museum, and to interpret these collections through exhibitions and research as a means of educating the Palauan culture and traditions, and the arts.



Field Collections



Research



The Ethnography & Art Collections Section conducts research and document the past and present material culture and oral history of Palau, including periods of exploration, Immediate post-contact settlement of Palau and subsequent immigration from the earlier centuries.

In 2014- acquired Past Perfect Software to catalogue all collections and images and create links between natural and cultural collections and the videos and images

Outdoor Exhibit



Bai



Mesekiu el
Bad



Haruo
Remeliik
Sculpture



Water
Tank
Pictorial

Indoor Exhibit



Temporary exhibition:



Permanent exhibition:



Palau through the years exhibition:



Natural history exhibition:

Indoor Exhibition



German
Time
exhibition:



Japan
Time
exhibition:



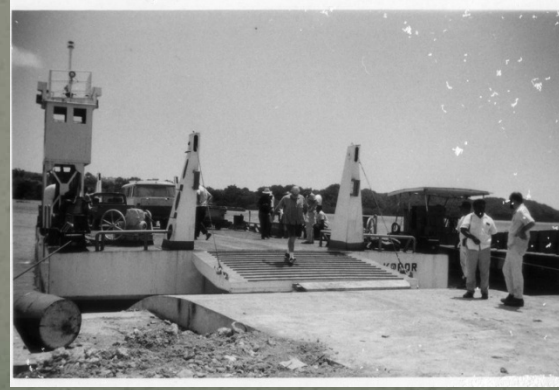
Traditional
Canoe Model
exhibition:



Japan Time
Buildings
model

Media Collections Section

The goal of this section is to document, collect, and produce media materials for public and educational use through all means of media channels such as TV, radio, Internet, outreach programs, and public displays, and to conserve and preserve media collections of Palau for generations to come and to establish the Media Collections Section as the National Media Archive in the Republic.



Media Collections

- In 2003, IMLS funds to digitize media collection a partnership project with the Palau Community College Library...
- most of video collections of VHS digitized.
- Over 200,000 digitized images
- thousands of hours of VHS video
- several thousands more hours of digitized audio
- over 25,000 Slide photographs, and negatives, rare etchings for Palau and Micronesia from the 1700's, motion pictures films
- 200 hour of digitized video and 1000 hours of unedited video documentary films of historical and cultural events in the Republic of Palau.
- over 1 000 digitized audio collection including the 1979 Palau Constitutional Convention.



Media Digitization equipment



Slide photo Scanner



Print/Negatives scanner



Audio Digitizer



Video Digitizer



Artwork scanner

BNM Research Library



Mission of the Belau National Museum Research Library is to collect, preserve, and make accessible to the public, documents and literature about Palau and Micronesia and to a lesser extent the Pacific. As collections in the library are sensitive to the elements, the Belau National Museum Library is not a circulating library, but welcomes visitors to visit and research during museum hours.

Collections

- Over 5,000 items in the collections which includes books, published and unpublished dissertations, newspapers, journals, field notes, maps, plans and posters.
- Small collection of rare books
- Houses the Belau National Museum Archives
- Less than 5% digitized thru the Pacific Digital Library Project- mainly public (government documents)



Rare Books



Book Shelves

Natural History

Mission: Conduct biological, ecological and ethnographic research on the plants and animals of the Palau archipelago to preserve, and make available to the local community, the terrestrial biodiversity of the islands.



Ethnobotany

- Collaborative research with New York Botanical Garden since 2007 produced Primary Health Care Manual
- Herbarium: Collection of over 5,000 plant vouchers
- Living Collection- over 300 native species Botanical Garden



Entomology and Bird Monitoring

- Study and Collections of over 8,000 insects, spiders, etc.
- Bird Survey and monitoring throughout Palau
- National Bird Protocol Birds as Keystone species for Forest Health



Natural History

Ethnobotany

Since 2007, BNM has collaborated with New York Botanical Garden in an ethnobotany program

The goal of the project is to compile a comprehensive specimen based checklist of the flowering plants, ferns and fungi of the Republic of Palau as a foundation resource for conservation and sustainable management of the natural areas of the country, as well as determining the uses of many plants during life cycle.

Collections



Specimen



Interviews



Field Work



Dr. Michael Balick NY Botanical Garden interviewing elders



Digitization Project with University of Hawaii Herbarium

- January 5 -31, 2012 Dr Michael Thomas - training on digitization of herbarium collections PCC Library Students
- Over 50% of herbarium vouchers digitized
- Donated Logtech camera- virtual training
- Database expanded linked to Pacific databases
- Oct 2012 Dr. Thomas assessed living collection developed a database for over 300 plants
- Dr. Art Whistler - species identification
- Over 2,500 vouchers bar coded
- 2014 –GEF funded short term strategy for living collection

Thank you Dr. Thomas!



Education



Mesulan g

