

Extending Anthophila research through image and trait digitization (Big-Bee)



Katja C. Seltmann

Vernon and Mary Cheadle Center for
Biodiversity and Ecological Restoration,
University of California, Santa Barbara
ADBC Summit, September 21, 2021
seltmann@ucsb.edu



UC SANTA BARBARA

What is Big-Bee?





Project Start Date: September 15, 2021
Project Period: 3 years

UC SANTA BARBARA

CALIFORNIA ACADEMY OF SCIENCES

UMMZ

MUSEUM OF COMPARATIVE ZOOLOGY

HARVARD UNIVERSITY

UNHC
MCZ

CAS
EMEC

UCSB
LACM
SDMC

ASUHC

UCMC

SEMC

UMMZI

FSCA

the nat
 entomology

NATURAL HISTORY MUSEUM
 LOS ANGELES COUNTY

ESSIG MUSEUM
 OF ENTOMOLOGY

ASU
 Biodiversity Knowledge Integration Center
 Arizona State University

UNIVERSITY OF NEVADA RENO
 1874

KU BIODIVERSITY INSTITUTE & NATURAL HISTORY MUSEUM
 The University of Kansas

UNIVERSITY OF COLORADO

UNIVERSITY OF NEW HAMPSHIRE

FLORIDA STATE COLLECTION OF ARTHROPODS



Focal Taxa

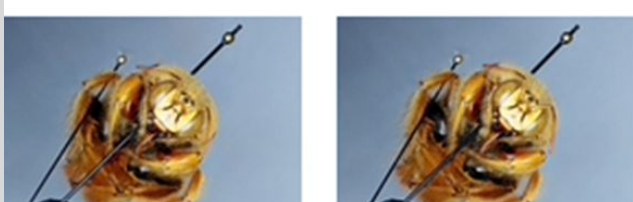
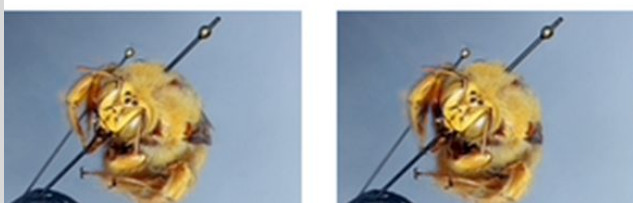
Family		Genus	Species in ITIS
Apidae		Bombus, Peponapis, Xenoglossa, Xylocopa	678
Megachilidae	Osmiini	Osmia, Afroheriades, Ashmeadiella, Atoposmia, Chelostoma, Haetosmia, Heriades, Hofferia, Hoplitis, Hoplosmia, Noteriades, Ochreeriades, Othinosmia, Protosmia, Pseudoheriades, Stenoheriades, Stenosmia, Wainia, Xeroheriades	1087
	Megachilini	Megachile	1522
Melittidae		Dasypoda, Samba, Capicola, Eremaphanta, Hesperapis, Ceratonomia, Meganomia, Pseudophilanthus, Uromonia, Afrodasygoda, Macropis, Promelitta, Melitta, Rediviva, Redivivoides	206
Andrenidae		Andrena	1556
Colletidae		Colletes	460
Total species			5509

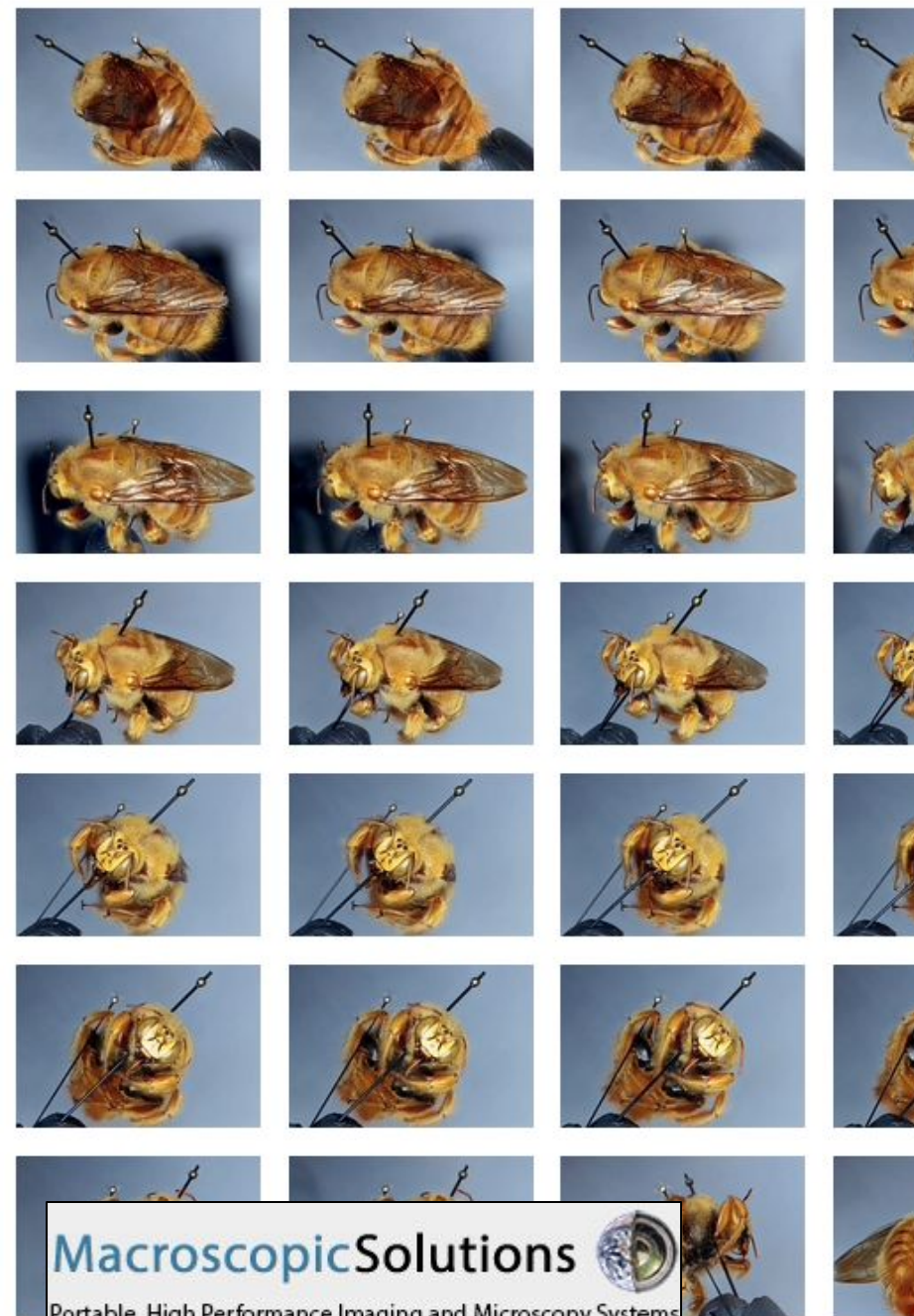




Digitization Goals

Digitizing institution	Digitized specimens	Focus-stacked images	3D image suites	Additional Images
Arizona State University (ASUHC)	10,000	0	0	
California Academy of Sciences (CAS)	142,325	5,474	500	
Florida State Collection of Arthropods (FSCA)	90,495	5,294	500	
Harvard University (MCZ)	52,324	6,492	500	
Karlsruhe Institute of Technology (KIT)	2000	0	0	2,000 (microCT)
Natural History Museum of Los Angeles County (LACM)	72,681	6,543	500	
San Diego Natural History Museum (SDMC)	14,224	797	3,000	
University of California-Berkeley (EMEC)	69,297	9,892	100	
University of California, Santa Barbara (UCSB)	8,697	5,092	4,000	
University of Colorado (UCMC)	62,677	10,160	100	
University of Kansas (SEMC)	9,495	28,185	100	
University of Michigan Museum of Zoology (UMMZ)	27,815	15,198	500	
University of New Hampshire Collection of Insects and Arthropods (UNHC)	6,783	12850	500	1,000 (CLSM)
USGS Native Bee Inventory and Monitoring Lab (USGS BIML)	4000	4,000	0	
Total:	572,813	109,977	10,300	3,000

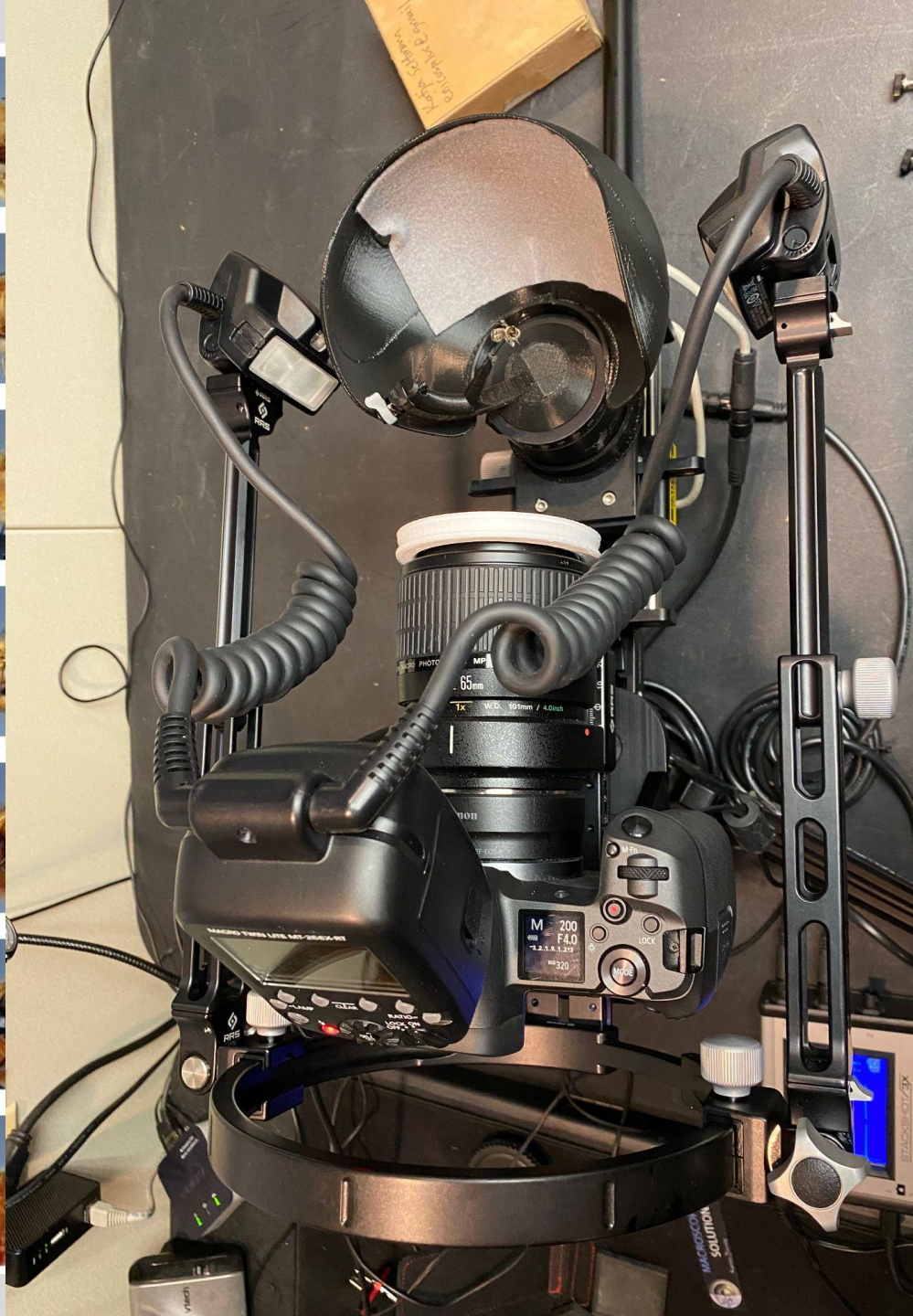




Macroscopic Solutions



Portable, High Performance Imaging and Microscopy Systems





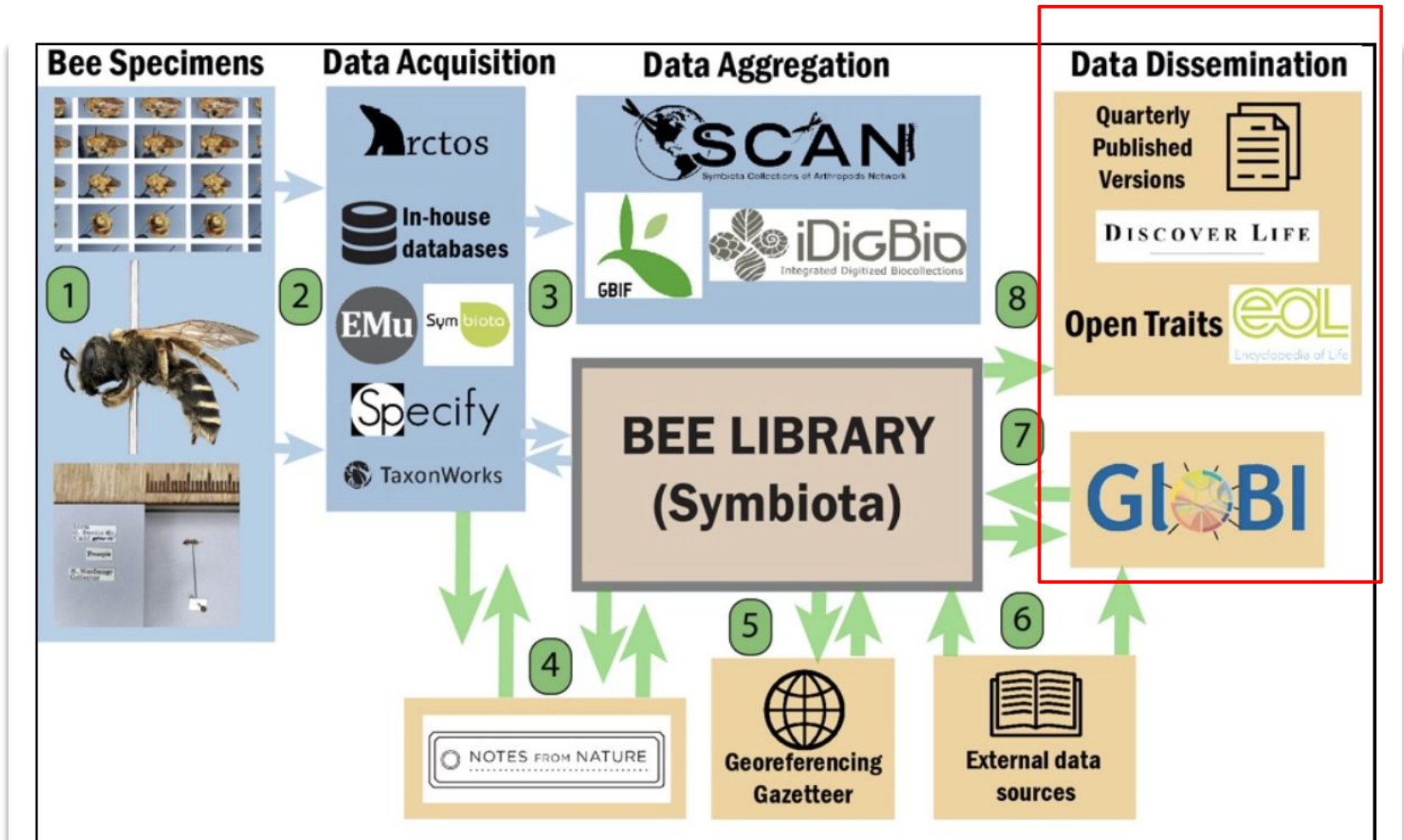
Trait Digitization

- **Biotic Associations**
(parasites, pathogens, floral specialization)
- **Body size, color, hairiness**
- **Nesting Biology**
- **Phenology**
(seasonality, flight period)





Biodiversity Data Science (a dataset approach)



Trait and Specimen Datasets



Specimen data from the Consortium of California Herbaria

Home Search Collections Map Search Checklists Image Search Browse Images Data Use Policy About CCH Welcome Kapal My Profile Logout Sitemap

Home >> My Profile >> Return to Dataset Listing >> **Dataset Manager**

SCI Checklist
Role: owner

- Occurrence List
- General Management
- User Access

Occurrence Dataset Management

These tools will allow you to define and manage datasets from

Owned by You

SCI Checklist (#5)
Plants of SCI
Created: 2021-05-05 11:04:17

Shared with You

There are no datasets shared with you

catalog #	Collector	Scientific Name	Locality
LA202819	J.D. Sauer 5679 [1976-05-18]	Mesembryanthemum nodiflorum (Aizoaceae)	United St
LA202815	J.D. Sauer 4711 [1970-03-14]	Carpobrotus chilensis (Aizoaceae)	United St
LA96190	Unknown s.n. [1966-08-17]	Rhus integrifolia (Anacardiaceae)	United St
LA62807	F.R. Fosberg 7625 [1932-03-03]	Rhus integrifolia (Anacardiaceae)	United St
LA98080	L. Faussett 22 [1979-03-21]	Rhus integrifolia (Anacardiaceae)	United St
LA62858	F.R. Fosberg 7686 [1932-03-23]	Rhus ovata (Anacardiaceae)	United St
LA104180	P. Davis 66597 [1980-05-04]	Rhus ovata (Anacardiaceae)	United St
LA202979	Ira W. Clokey 5110 [1930-07-02]	Artemisia californica (Asteraceae)	United St
LA203021	Jonathan Sauer 6268 [1983-02-01]	Baccharis salicifolia (Asteraceae)	United St
LA203014	R. Hoffmann s.n. [1931-04-12]	Baccharis salicifolia (Asteraceae)	United St
LA202458	F.R. Fosberg 7531 [1932-03-25]	Encelia californica (Asteraceae)	United St
LA200215	Jonathan Sauer 5080 [1972-06-02]	Grindelia camporum (Asteraceae)	United St
LA203663	Anne Mower s.n.	Hazardaria deltonsa	United St

partOf: Luong, J.C., Turner, P.L., Phillipson, C.N. and Sellmann, K.C. (2019). Local grassland restoration affects insect communities. *Ecol. Entomol.* 44: 471-479. <https://doi.org/10.1111/een.12721>

Specimen Duplicates

No Linked Duplicate Records

Search for Records to Link

Genetic Resources

Add New Resource

Name:

Identifier:

Locus:

URL:

Notes:

Add New Genetic Resource

UCSB - University of California Santa Barbara Herbarium (UCSB)

Home >> Collection Management >> Public Display >> Editor

Occurrence Data Determination History Images Linked Resources Traits Admin

Trait: Angiosperm Phenological Traits

Reproductive

Open Flower:

- present
- absent

Open Flower:

- present
- absent

Senesced Flower:

- present
- absent

Fruit:

- present
- absent

Sterile

Not scorable

Notes:

Source:

Status:

Save Edits data saved! Delete Coding

Label Processing

Zoom? Rotate: Med Res. High Res.

OCR Image Options

- OCR whole image
- OCR w/ analysis

Image 1 of 1

Bee Library for Supporting Dataset Creation and Trait Digitization (Symbiota-Light)



Notes From Nature



Label transcription
Measurement Tool for **Intertegular Span**

Image Datasets

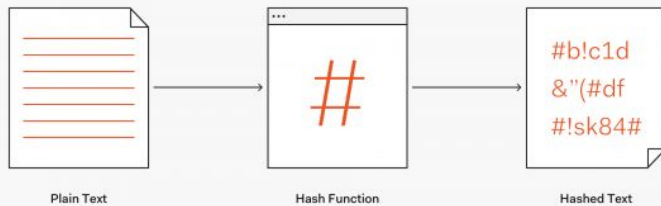


Specimen Record
urn:uuid:16f6de61-541c-46b1-b7e7-d8303e6f53db@jhpoelen.nl
urn:uuid:16f6de61-541c-46b1-b7e7-d8303e6f53db@idjbio.org

```
{
  "dwc:identificationRemarks": "Labels: Bodega Calif Apl 3; type 17219; Spinoliella puellae CKII cotype.",
  "dwc:specificEpithet": "puellae",
  "dwc:countryCode": "US",
  "dwc:county": "Sonoma",
  "dwc:recordedBy": "no agent data",
  "dwc:georeferenceSources": "GEOLocate",
  "dwc:order": "Hymenoptera",
  "dwc:references": "http://mczbase.mcz.harvard.edu/guid/MCZ.Ent:17219",
  "dwc:individualCount": "1",
  "dwc:occurrenceID": "MCZ.Ent:17219",
  "dwc:dateIdentified": "2012",
  "dwc:language": "en",
  "id": "MCZ.Ent:17219",
  "dwc:stateProvince": "California",
  "dwc:institutionCode": "MCZ",
  "dwc:country": "United States",
  "dwc:typeStatus": "Synotype of Spinoliella puellae",
  "dwc:collectionCode": "Ent",
  "dwc:rightsHolder": "President and Fellows of Harvard College",
  "dwc:kingdom": "Animalia",
  "dwc:decimalLatitude": "38.345194",
  "dwc:georeferenceVerificationStatus": "verified by MCZ collection",
  "dwc:basalRecord": "PreservedSpecimen",
  "dwc:genus": "Nomadopsis",
  "dwc:continent": "North America",
  "dwc:preparations": "whole animal (mounted)",
  "dwc:identifiedBy": "Cockerell",
  "dwc:dynamicProperties": "{}",
  "dwc:disposition": "not applicable",
  "dwc:ownerInstitutionCode": "Museum of Comparative Zoology, Harvard University",
  "dwc:higherClassification": "Animalia Arthropoda Hexapoda Insecta Pterygota Hymenoptera Andrenidae Nomadopsis puellae",
  "dwc:phylum": "Arthropoda",
  "dwc:locality": "Bodega",
  "dwc:institutionID": "b4640718-8e03-11d8-b956-b8a03c50a862",
  "dwc:geodeticDatum": "WGS84",
  "dwc:class": "Insecta",
  "dwc:catalogNumber": "17219",
  "dwc:nomenclaturalCode": "ICZN",
  "dwc:terms": "PhysicalObject",
  "dwc:identification": []
}
```

```
{
  "dwc:identifiedBy": "Cockerell",
  "dwc:identificationRemarks": "Determination year is a proxy for unknown data. It will be updated when year is known Determinations made by Cockerell",
  "dwc:identificationVerificationStatus": "expert ID",
  "coreid": "MCZ.Ent:17219",
  "dwc:identificationID": "3152831",
  "dwc:dateIdentified": "2012",
  "dwc:scientificName": "Nomadopsis puellae"
},
{
  "coreid": "MCZ.Ent:17219",
  "dwc:identifiedBy": "Theodore D. A. Cockerell",
  "dwc:scientificName": "Spinoliella puellae",
  "dwc:identificationVerificationStatus": "type ID",
  "dwc:identificationID": "3630139"
},
{
  "dwc:identifiedBy": "Cockerell",
  "dwc:identificationVerificationStatus": "Type Publication",
  "dwc:scientificNameAuthorship": "Cockerell",
  "dwc:identificationReferences": "Cockerell, T. D. A. 1933. Bees collected at Borego, California, by Wilmatte P. Cockerell & Milene Porter. Pan-Pacific Entomologist 9:25-28",
  "dwc:typeStatus": "Syntype",
  "coreid": "MCZ.Ent:17219",
  "dwc:identificationID": "868174315305405521SynType",
  "dwc:phylum": "Arthropoda",
  "dwc:dateIdentified": "1933",
  "dwc:scientificName": "Spinoliella puellae"
}
```

Hashing Algorithm

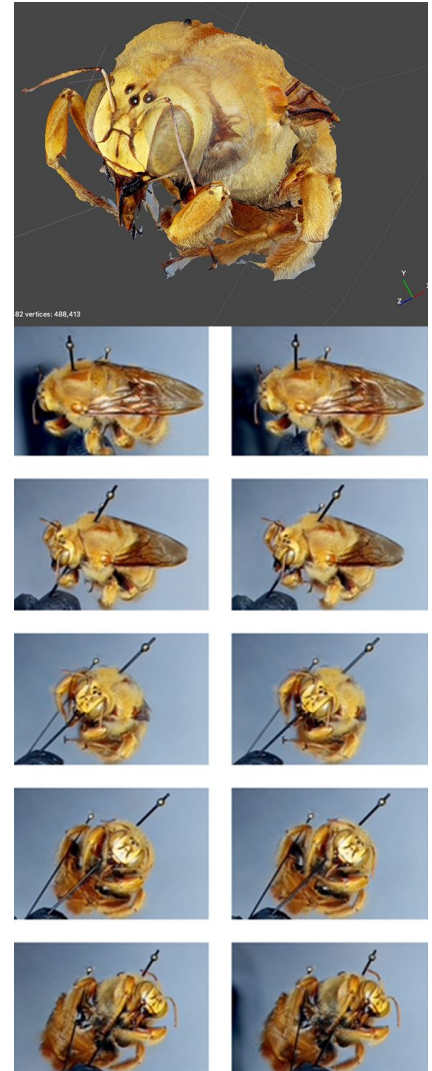


Media Record
urn:uuid:6e0122c9-28b7-4bd2-9a0c-46bb3346c713@jhpoelen.nl
urn:uuid:6e0122c9-28b7-4bd2-9a0c-46bb3346c713@idjbio.org

```
{
  "sha256:05b41ea4707614b20...",
  "location of clone or original": "register clone or original",
  "find more copies": "find more copies"
},
{
  "xmpRights:WebStatement": "http://creativecommons.org/licenses/by-nc-sa/3.0/",
  "dc:type": "StillImage",
  "dwc:ExmpExt:WorldRegion": "North America",
  "photoshop:Credit": "Museum of Comparative Zoology, Harvard University",
  "ac:metadata:language": "en",
  "dwc:ExmpExt:CountryName": "United States",
  "ac:provExt:Literal": "Museum of Comparative Zoology, Harvard University",
  "dc:format": "image/jpeg",
  "ac:associatedSpecimenReference": "http://mczbase.mcz.harvard.edu/guid/MCZ.Ent:17219",
  "dc:rights": "http://creativecommons.org/licenses/by-nc-sa/3.0/legalcode",
  "xmpRights:UsageTerms": "Available under Creative Commons Attribution Share Alike Non Commercial (CC-BY-NC-SA 3.0) license",
  "ac:serviceExpectation": "online",
  "coreid": "MCZ.Ent:17219",
  "dwc:terms:identifier": "http://mczbase.mcz.harvard.edu/media/1493653",
  "dwc:terms:description": "wing",
  "ac:metadata:Provider:Literal": "Museum of Comparative Zoology, Harvard University",
  "dwc:terms:type": "http://purl.org/dc/dcmitype/StillImage",
  "dwc:terms:title": "http://mczbase.mcz.harvard.edu/guid/MCZ.Ent:17219 Nomadopsis puellae wing",
  "xmpRights:Owner": "Museum of Comparative Zoology, Harvard University",
  "ac:variant:Literal": "Best Quality",
  "dwc:terms:rights": "http://creativecommons.org/licenses/by-nc-sa/3.0/legalcode",
  "dwc:ExmpExt:ProvinceState": "California",
  "ac:accessURL": "http://mczbase.mcz.harvard.edu/specimen_images/entomology/large/MCZ-ENT00017219_Spinoliella_puellae_wing.jpg",
  "dwc:terms:modified": "2020-03-13",
  "dwc:scientificName": "Nomadopsis puellae"
}
```

Media Record
urn:uuid:0b5b4499-1056-4adc-9017-befdc5914c13@jhpoelen.nl
urn:uuid:0b5b4499-1056-4adc-9017-befdc5914c13@idjbio.org

```
{
  "sha256:8d49bd24f6ba300b4...",
  "location of clone or original": "register clone or original",
  "find more copies": "find more copies"
},
{
  "Rights:WebStatement": "http://creativecommons.org/licenses/by-nc-sa/3.0/",
  "dwc:type": "StillImage",
  "dwc:ExmpExt:WorldRegion": "North America",
  "osshop:Credit": "Museum of Comparative Zoology, Harvard University",
  "dc:metadata:language": "en",
  "dwc:ExmpExt:CountryName": "United States",
  "dwc:provExt:Literal": "Museum of Comparative Zoology, Harvard University",
  "dwc:format": "image/jpeg",
  "ac:associatedSpecimenReference": "http://mczbase.mcz.harvard.edu/guid/MCZ.Ent:17219",
  "dwc:rights": "http://creativecommons.org/licenses/by-nc-sa/3.0/legalcode",
  "dwc:ExmpExt:ProvinceState": "California",
  "ac:accessURL": "http://mczbase.mcz.harvard.edu/specimen_images/entomology/large/MCZ-ENT00017219_Spinoliella_puellae_hal.jpg",
  "dwc:terms:modified": "2020-03-13",
  "dwc:scientificName": "Nomadopsis puellae"
}
```





Biotic Interaction Datasets

TPT Collections Status

Click on badges to browse/download indexed records or inspect automated reviews.

[edit collection list](#)

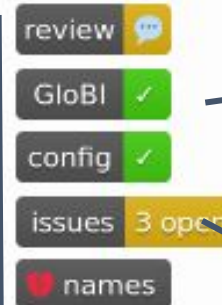


status	Institution/collection	platform	contact
 	BPBM / Bishop Museum / J. Linsley Gressitt Center for Research in Entomology	Specify	Jim Boone, Neal Evenhuis
 	BYU / Brigham Young University Arthropod Museum BYUC / Monte L. Bean Museum of Life Science Museum Insects and Arachnids	SynScan	Michael Whiting
 	CAS / California Academy of Sciences / Entomology Collection	Institutional	Chris Grinter, Michelle Trautwein
 	CUAC / Clemson University / Clemson University Arthropod		



Review Notes
Indexed Interactions Tables
Indexed Names Tables

Review of [gloBI] interactions for [cas-ent]
- 14022 interaction(s)
- 48 note(s)
- 14024 info(s)



Browse Explore Discover

Western Leaf-l (Leptoglossus)

Supported by: umcatalag/CAS/globalbioticinteractions/discussion...

Refuted by: None.

Ooencyrtus

Accessed via: <https://github.com/206f3888d312ipr> at 2021-03-26T23:47:34.914Z. [Start](#)

globalbioticinteractions / cas-ent

Configuration Translation Tables
Data Location

3 Open ✓ 0 Closed

Author

Discussion Questions Notes

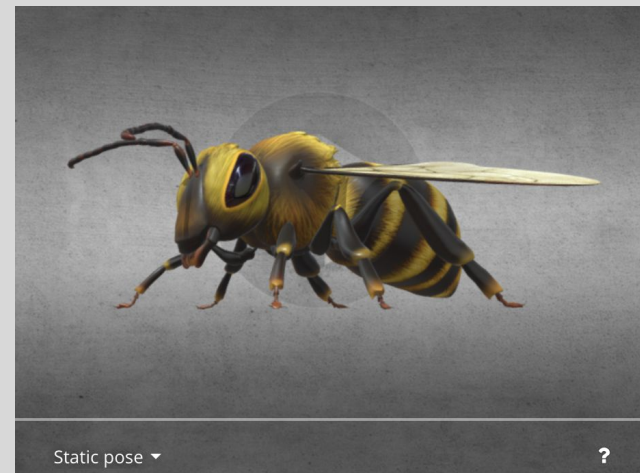
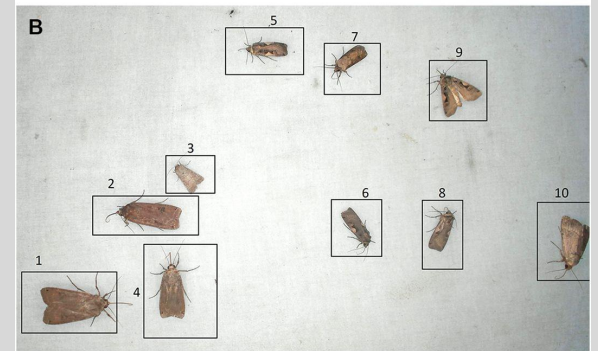
share CAS-E #3 opened on Dec

suggest to g #2 opened on Dec

Data review #1 opened on Dec 11, 2020 by seimann

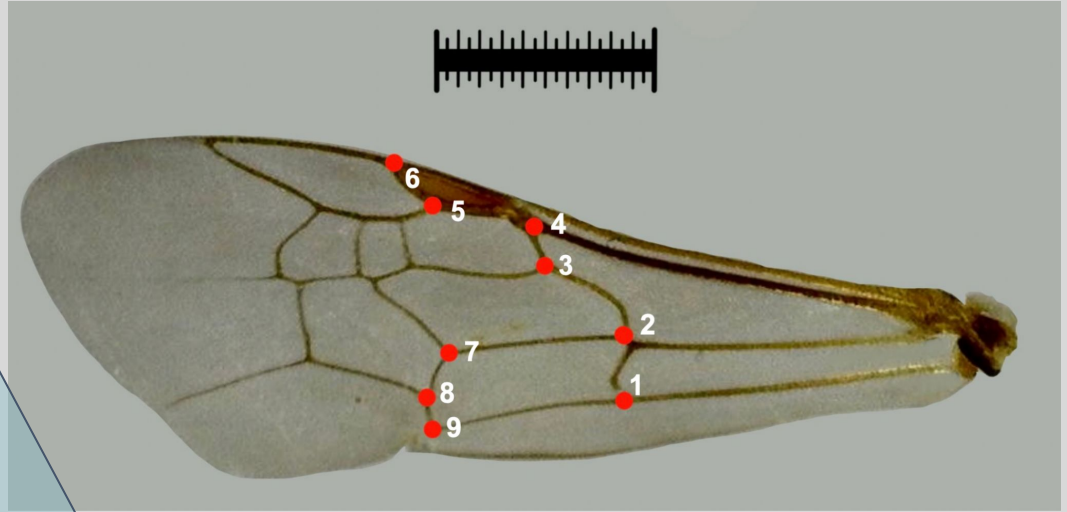
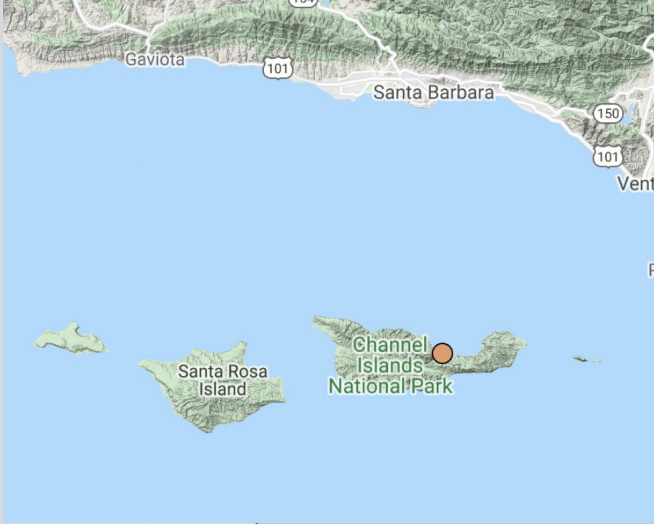


Broader Impacts - Computer Science





Broader Impacts - Identification Resources





Broader Impacts - Broad participation & training



US National Native Bee Monitoring RCN



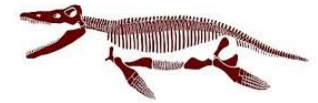
Thank you!



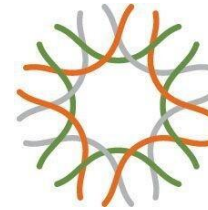
big-bee.net



MUSEUM OF COMPARATIVE ZOOLOGY



HARVARD UNIVERSITY



CALIFORNIA ACADEMY OF SCIENCES

