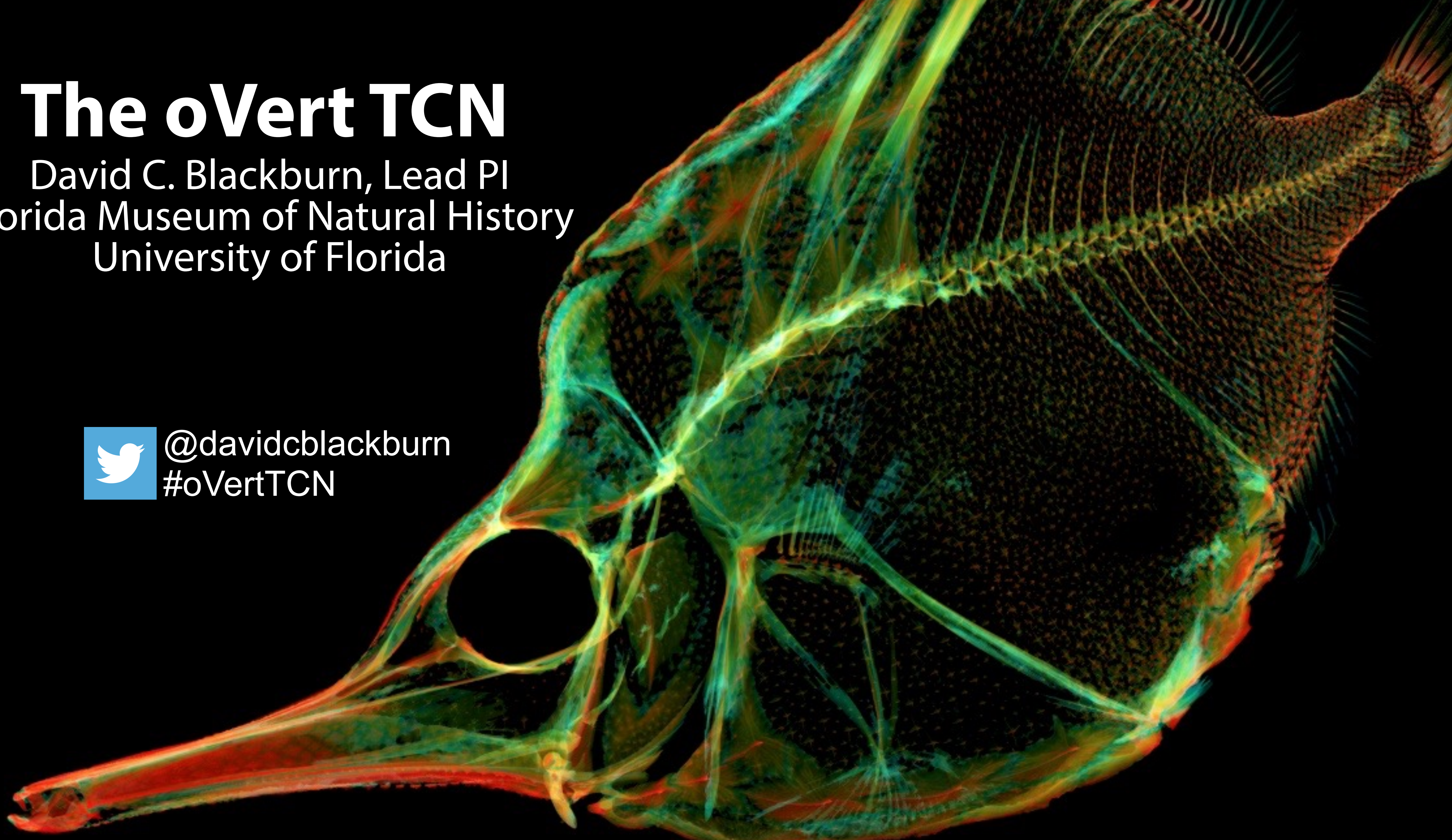


The oVert TCN

David C. Blackburn, Lead PI
Florida Museum of Natural History
University of Florida



@davidcblackburn
#oVertTCN





3D-imaging of vertebrates: skeletons of >80% living genera

CT-scanning, structured-light scanning, photogrammetry

25 funded institutions: 22 museums, 9 imaging centers

Includes 8 Partner to Existing Network awards

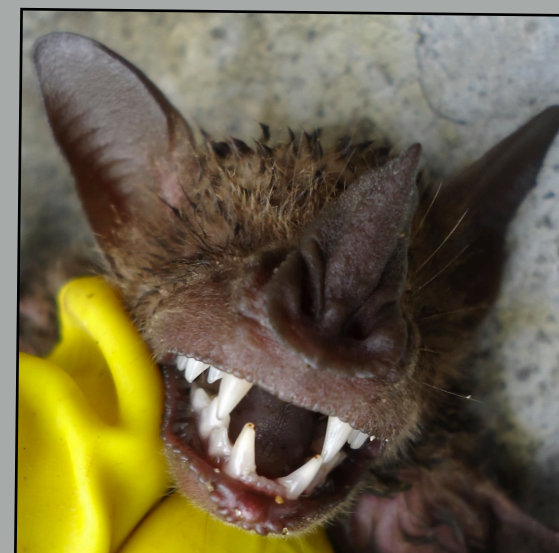
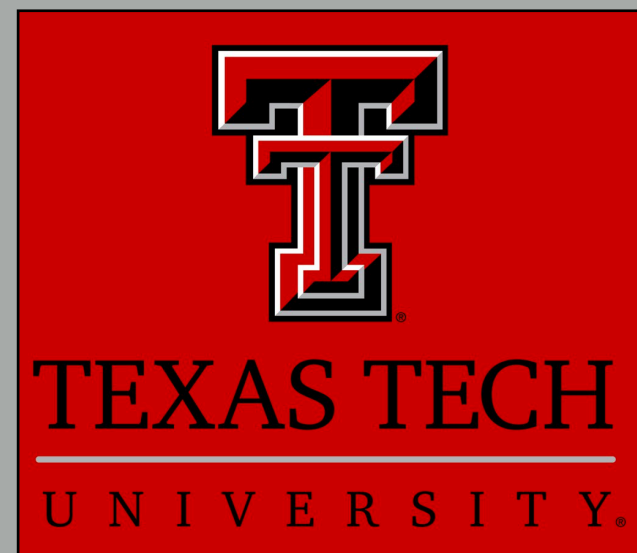


Partner to Existing Network, funded in 2021

BatPEN!

*A Partnership to Facilitate Scientific Inquiry
into the Vast Functional Trait Diversity of Phyllostomid Bats*

PI Richard Stevens, Texas Tech University; 2021–2023



Media 000039479: Skull [CTImageSeries] [Etc]

Download

Add to Cart

Edit

Represents: [Biological Specimen](#) [In Collection](#) [uf:herp:41558 Amblyrhynchus cristatus](#)

FILE OBJECT DETAILS

Media ID	000039479
Media type	CTImageSeries
File format(s)	image/tiff
File size	2,840,076,214 bytes
Object element or part	Skull
Side	--
Orientation	--
Short description	Tiff-stack
Full description	Migrated MorphoSource 1 Media File Title: Tiff-stack Migrated MorphoSource 1 Media Group Title: CT scan of UF41558, Amblyrhynchus cristatus
Creator	--
Date created	--
Date uploaded	January 16, 2018

Show more

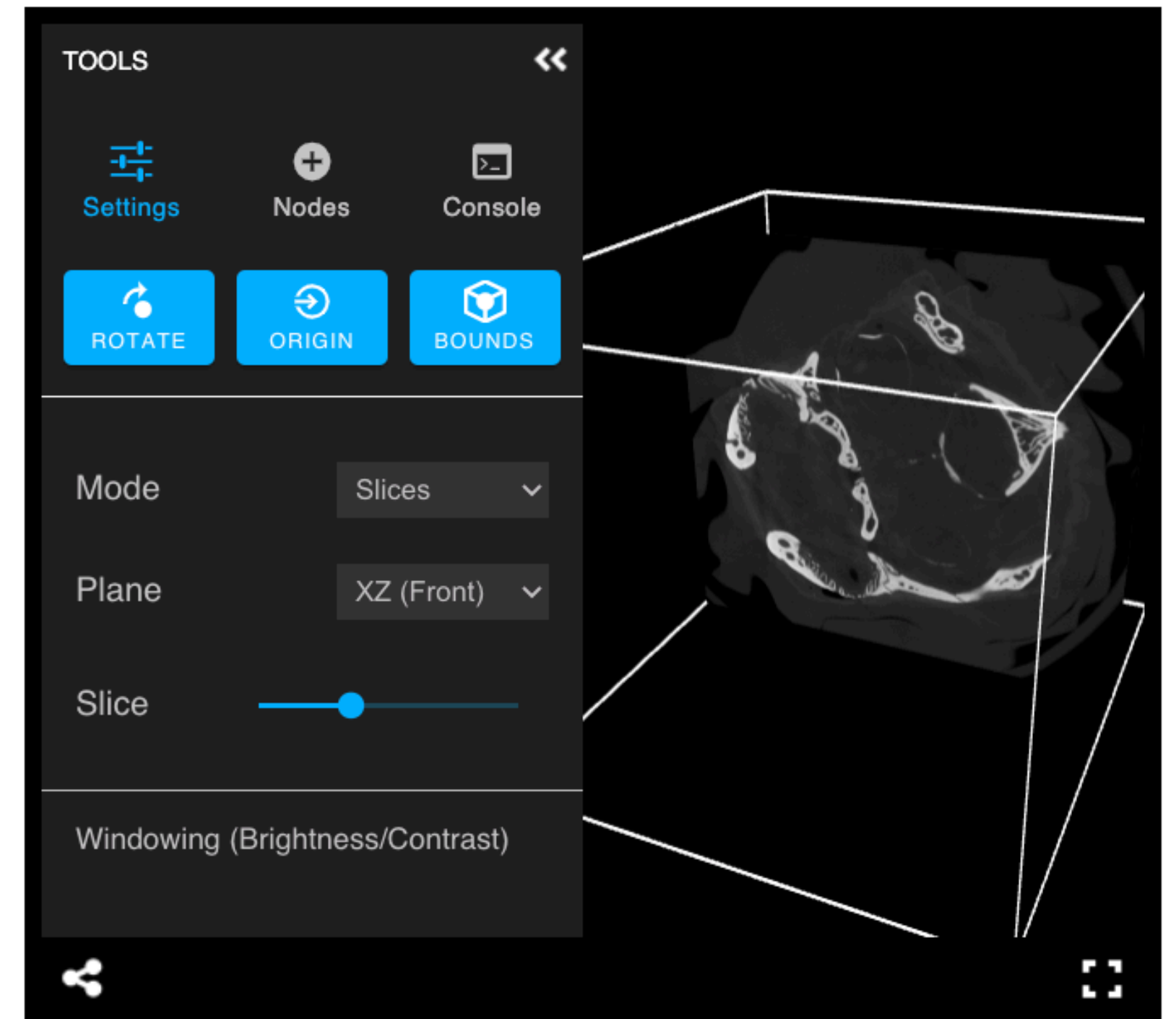


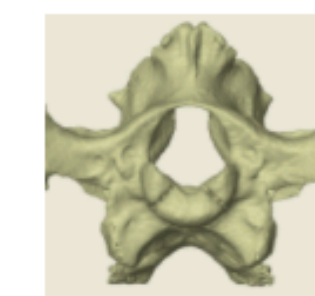
IMAGE ACQUISITION AND PROCESSING AT A GLANCE

Number of parent media	0
Number of processing events	1 (0 steps)
Modality	X-Ray Computed Tomography (CT/ microCT)

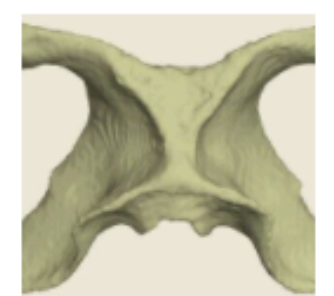
24 ADDITIONAL MEDIA RELATED TO ACQUISITION EVENT



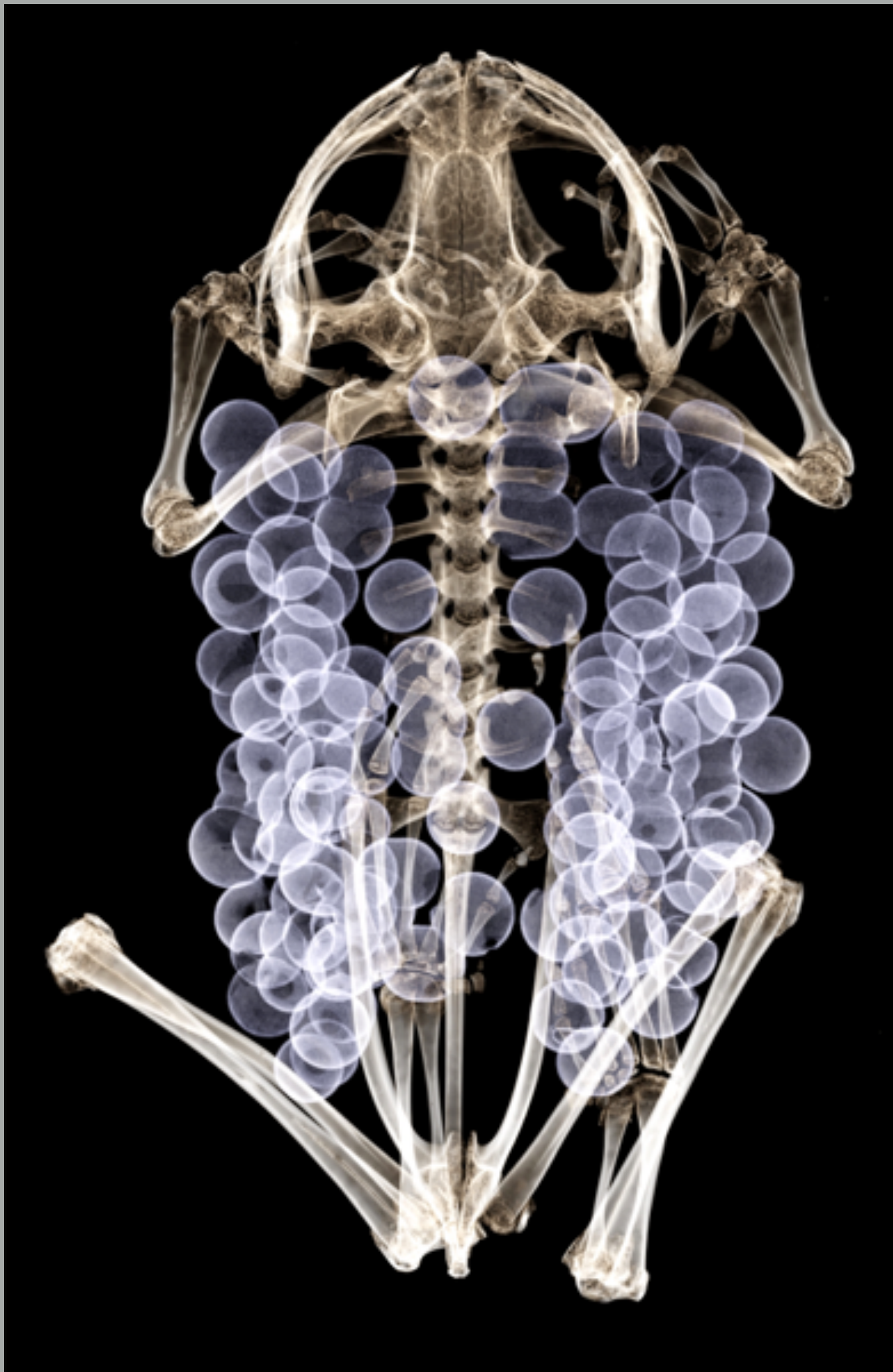
Media 000039536: Skull [Mesh] [Etc]



Media 000379407: Basicranium [Mesh] [CT]



Media 000379451: Parietal [Mesh] [CT]



Data available on MorphoSource

>28,000 media files of >12,000 specimens

>1,200,000 views; >126,000 downloads

>70 publications from oVert-related people

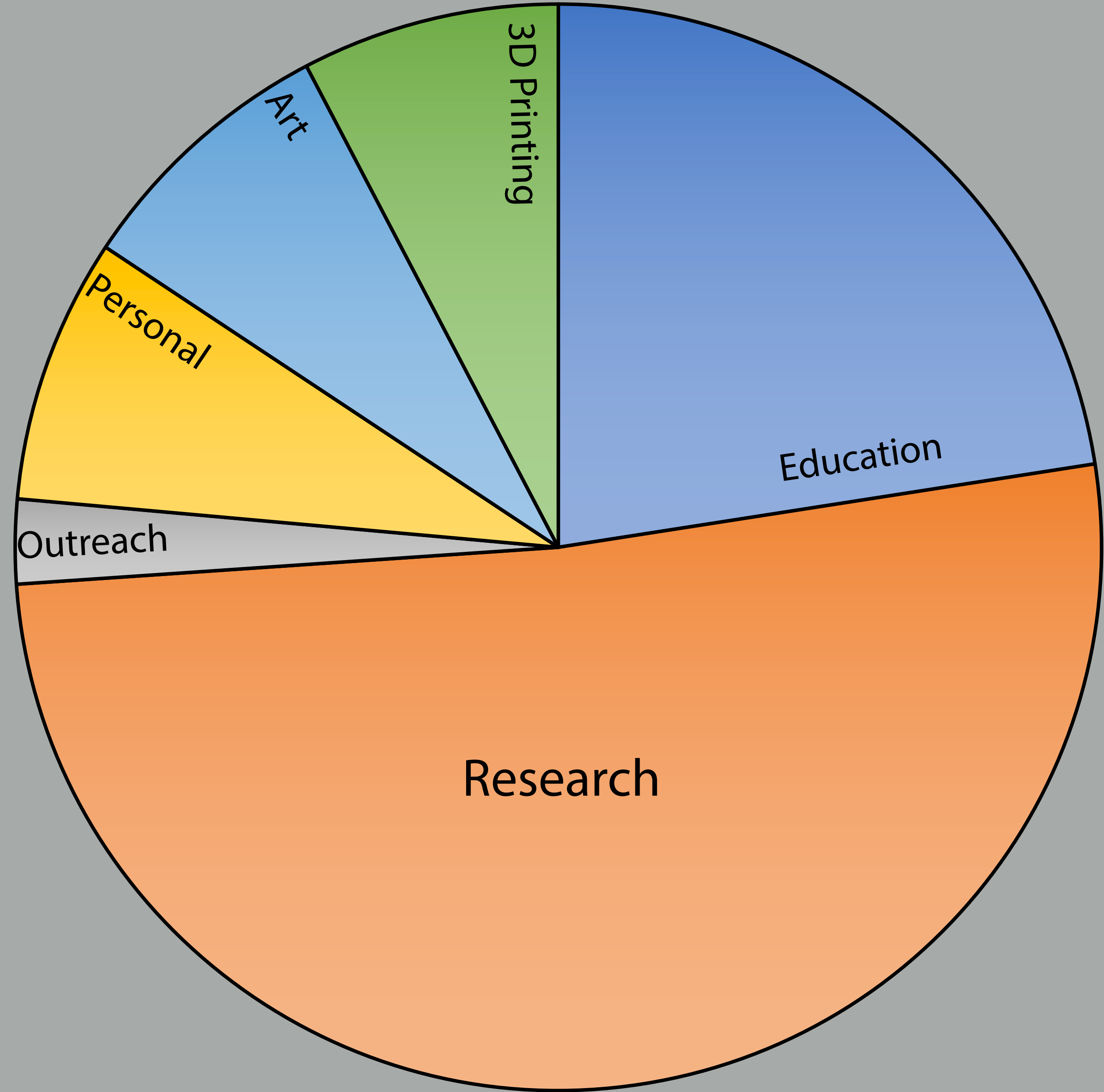
In Year 4:

>110 faculty, staff, students, and teachers

>700 students encountered oVert data in class



Usage of downloaded data



Collaborate with teachers to develop new learning activities

Powered by QUBES LOGIN



Natural History Collections Portal

Resources Participate Related Projects

Welcome to the Natural History Collections Portal! This page is a product of the collaboration that began between QUBES and the Biodiversity Literacy in Undergraduate Education (BLUE) projects. BLUE is a community of biodiversity, data, and education specialists who are working together to identify core biodiversity data competencies for undergraduates, develop strategies for integrating these competencies into the introductory biology curriculum, and build capacity for sustained development and implementation of biodiversity and data literacy education. You can find more about BLUE here: <https://www.biodiversityliteracy.com>

The vision for this portal is to create a space for the broader collections-based education community to aggregate and disseminate resources. All individuals and projects with natural history collection-based educational materials for any grade levels, disciplines, and topics are invited to link materials to this portal. To find *just* BLUE teaching resources visit [here](#).

Browse Resources
Participate
Related Projects

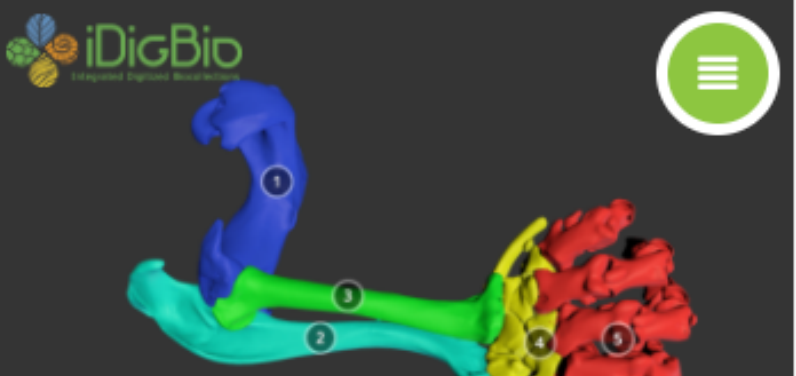
Copyright 2021 QUBES Powered by HUBzero, a Purdue project QUBES is supported by the National Science Foundation and other funding agencies



Origin and Diversity of Armor in Girdled Lizards

Jennifer Broo
Version: 1.0

Evolution, phylogene... 396 153 0 0 05.2020



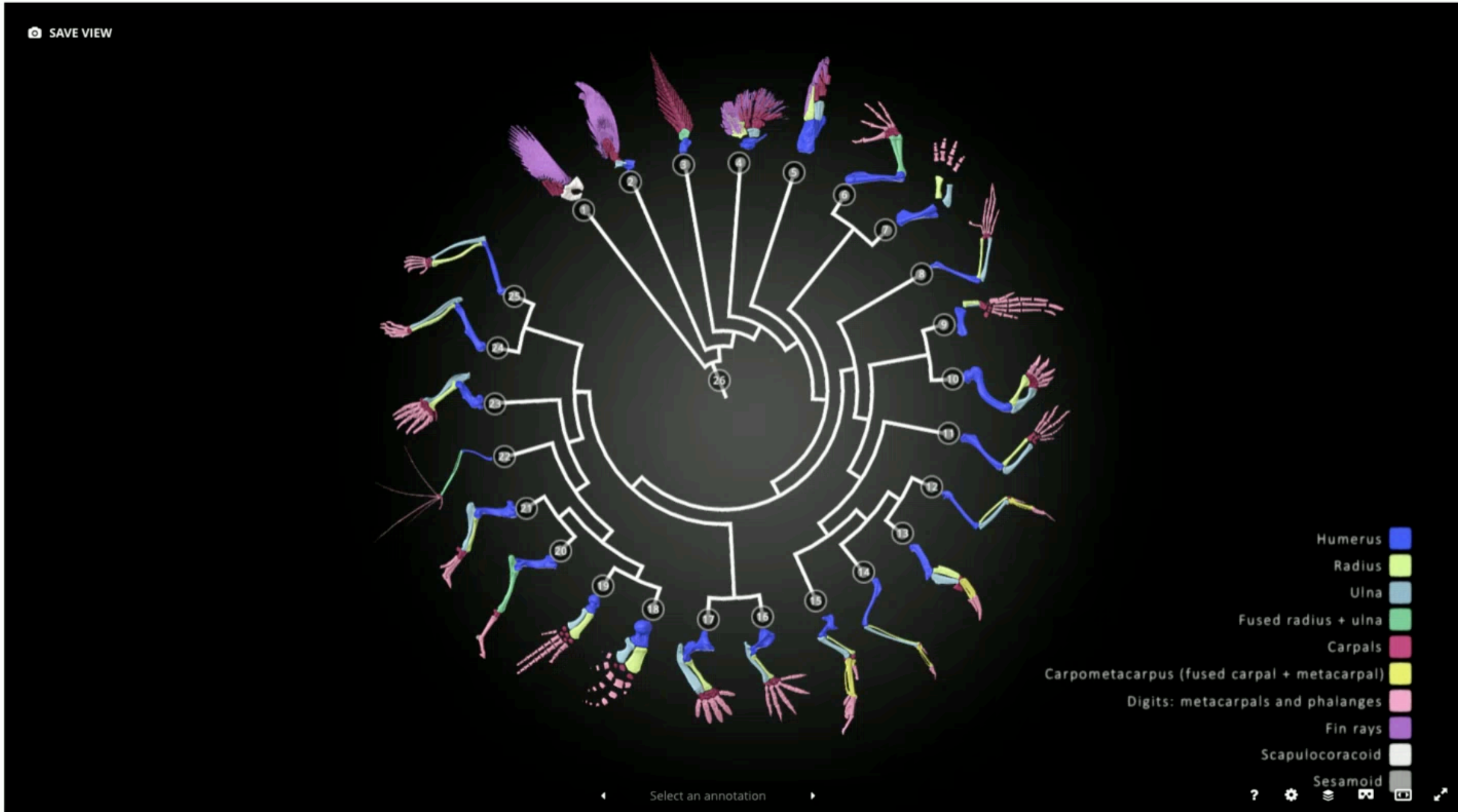
Evidence of Evolution Homologous Structures

Bridget Armstrong
Version: 1.0

Evolution, idigbio, Zo... 220 91 0 0 05.2020

Sketchfab EXPLORE BUY 3D MODELS FOR BUSINESS Search 3D models

SAVE VIEW



EDIT PROPERTIES
EDIT 3D SETTINGS

IN COLLECTIONS

- Limb evolution** UFCVA 6 0
- Coppery grass lizard** Blackburn Lab 0 900 30
- Sungazer lizard** Blackburn Lab 0 588 18
- Heloderma horridum U...** Blackburn Lab 3 1.2k 37
- Swazi dragon lizard** Blackburn Lab 0 350 14
- The 4 Fish-keteers: Lobe...** Blackburn Lab 0 829 3
- Vampire bat wing (UF M...** Blackburn Lab 0 142 3

LOAD MORE

Wheel of Homology: From A to Chimpanzee

3D Model

Blackburn Lab PREMIUM

485 4

Share

1.7M More model information



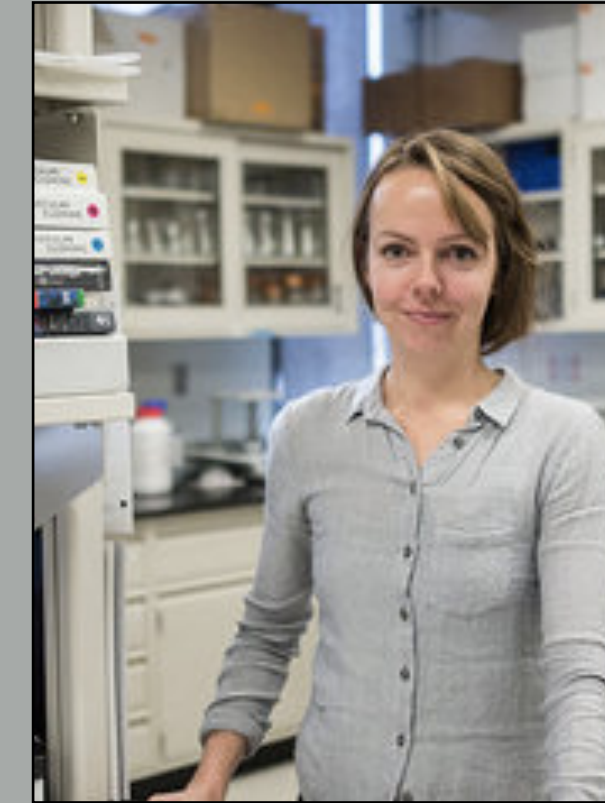
Teachers work directly with scientists to develop learning activities



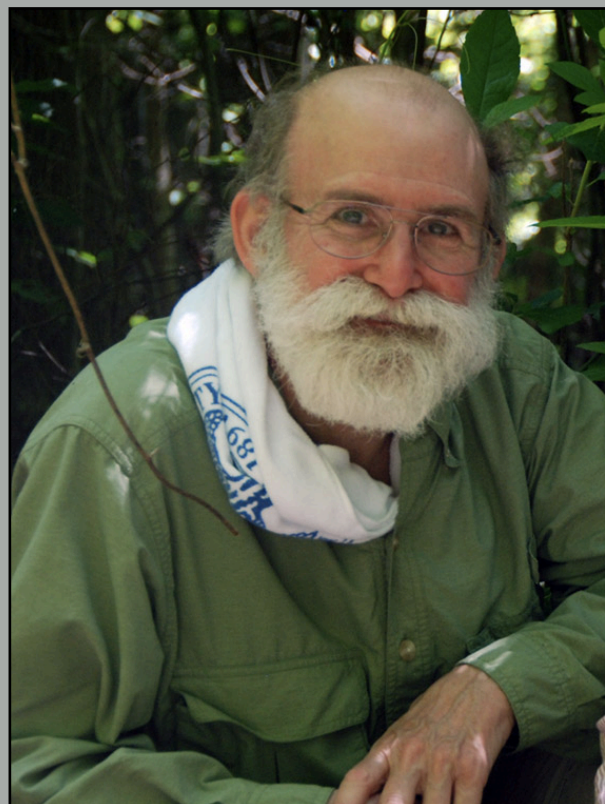
Kory Evans
Rice University



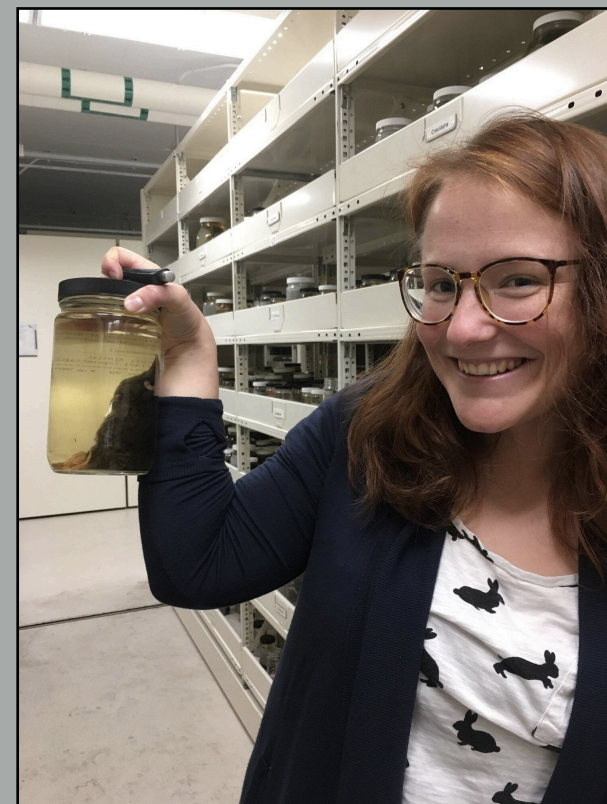
Todd Green
NYIT



Hillary Maddin
Carleton University



Dr. Al Savitzky
Utah State University

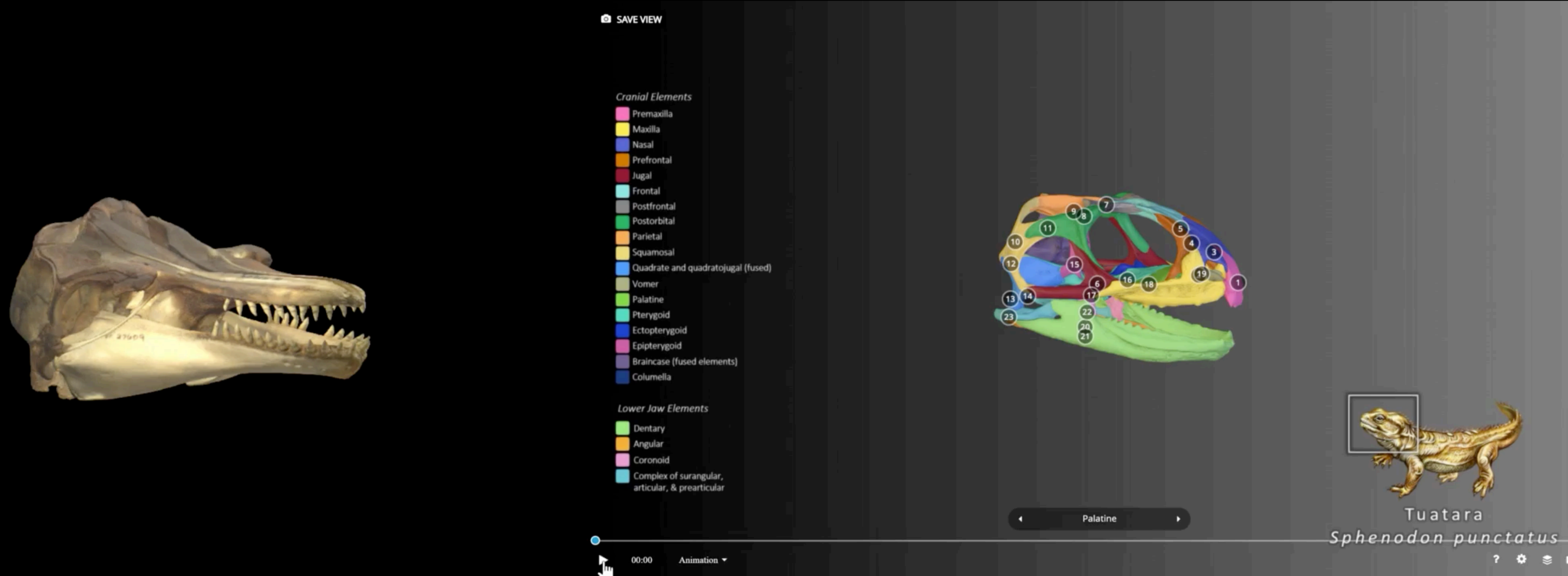


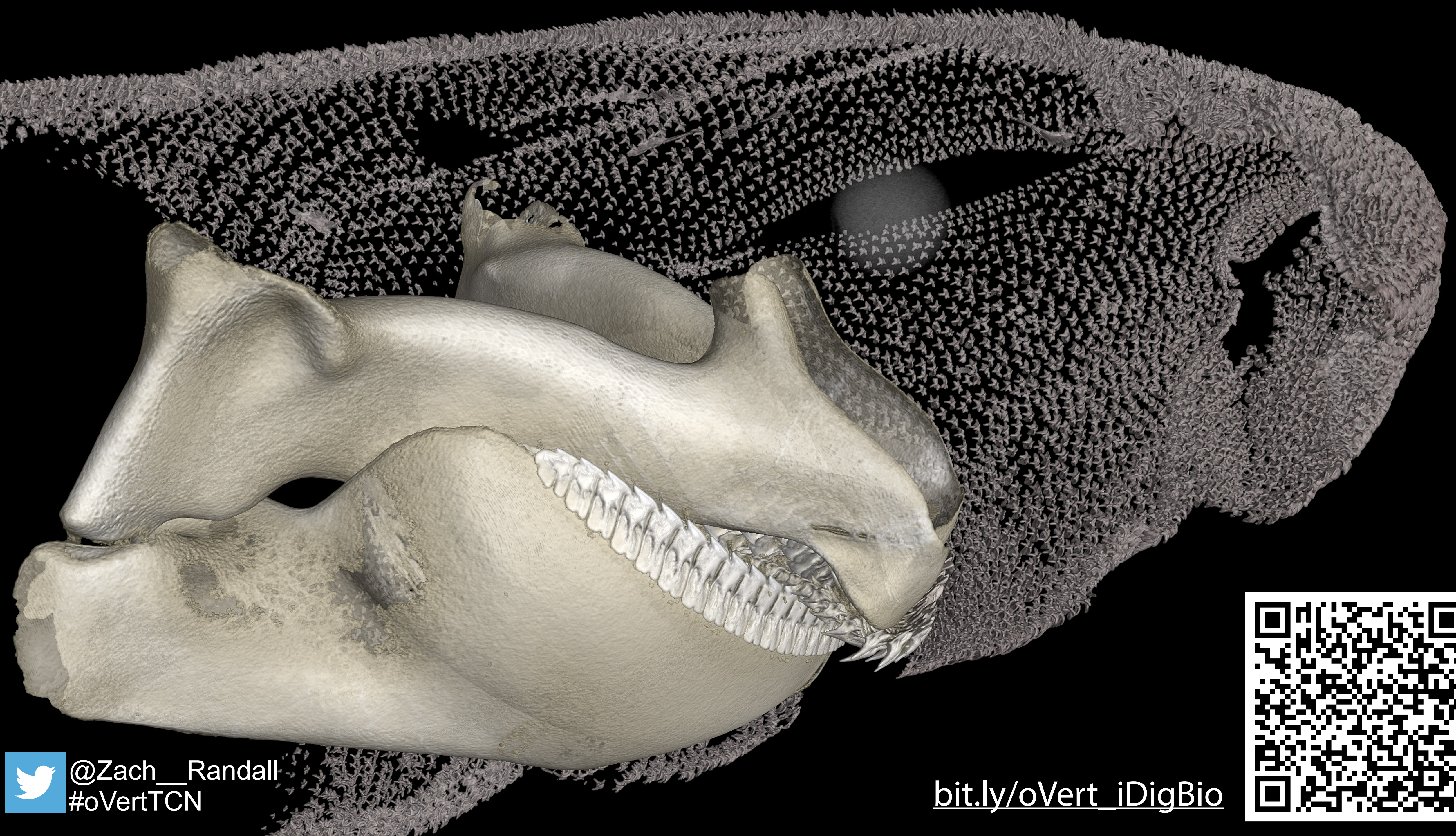
Stephanie Smith
Field Museum



Katie Stanchak
Univ. of Washington

Developing more impactful models on Sketchfab





@Zach_Randall
#oVertTCN

bit.ly/oVert_iDigBio

