

MorphoSource

Open Use 3D Data Repository



Doug M. Boyer / Assistant Prof. (Duke)
Julia M. Winchester / Postdoc (Duke)
Tim McGeary / Associate University Librarian (Duke)
Tim Ryan / Assoc. Prof (PSU)
Ed Gomes / Associate Dean of IT (Duke)
Gregg Gunnell / Director of Fossil Primates (Duke)
Seth Kaufman / CEO & Founder Whirligig Inc.



CAREER



MORPHO SOURCE



Started 2013



A place for 3D Data on vouchered specimens

Emulates a museum experience

www.morphosource.org





3D Data

Adhere to best-practice standards (Davies et al. 2016)

Volume

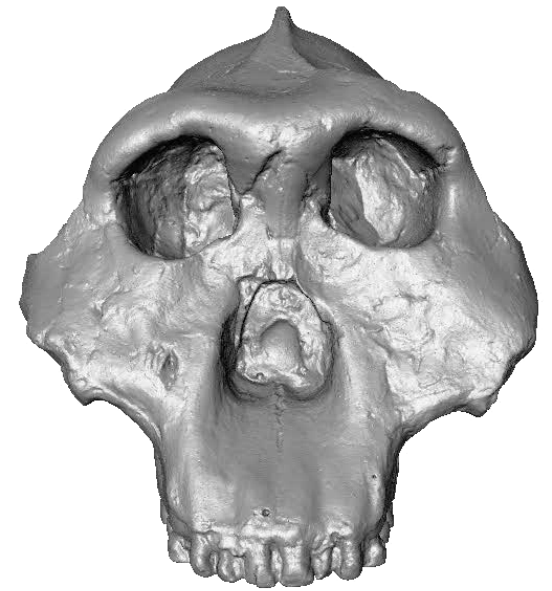
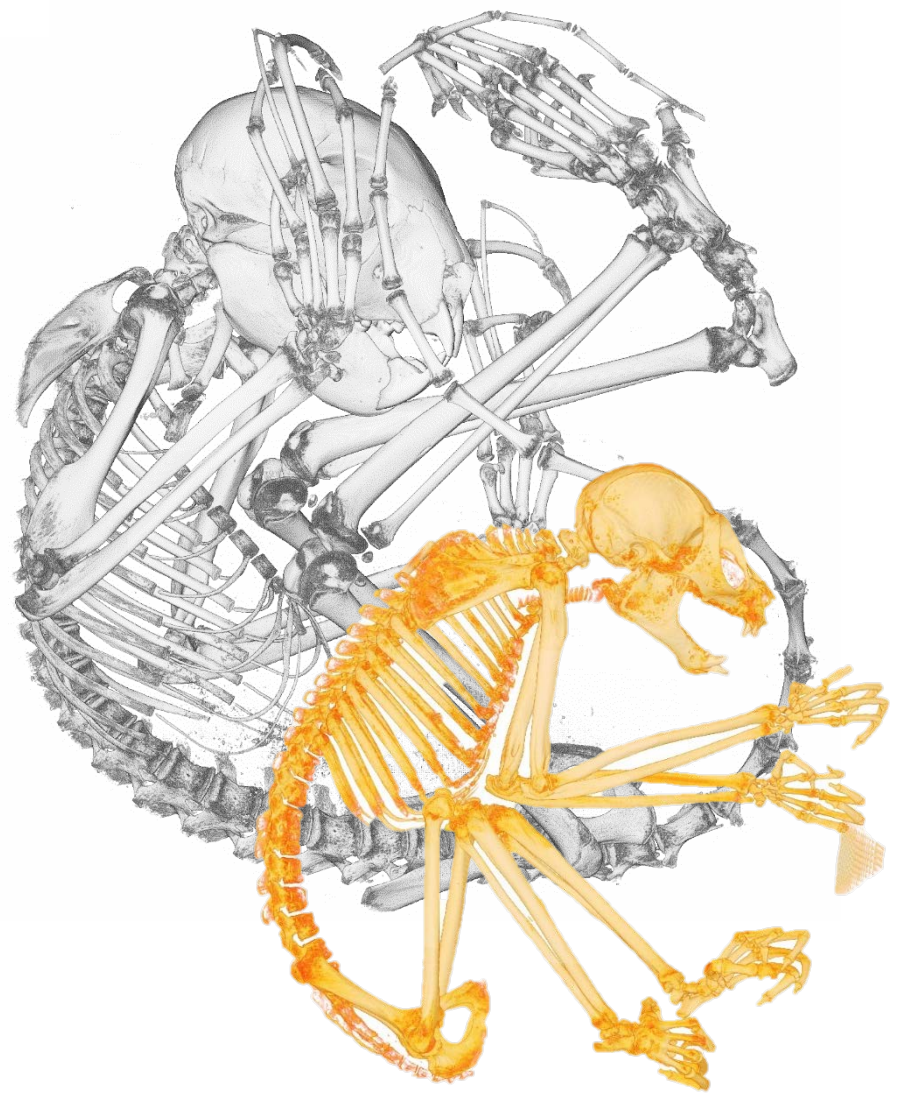
Modality – CT, MRI

Formats – tiff, dicom, jpeg, bmp

Surface

Modality – Laser, structured light,
photogrammetry

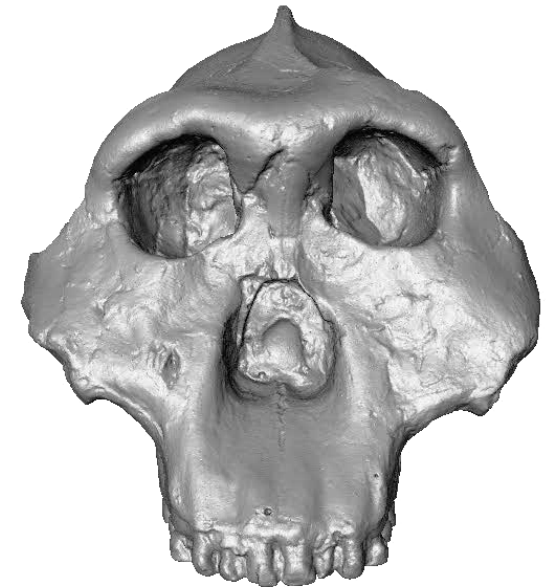
Formats – ply, stl, obj





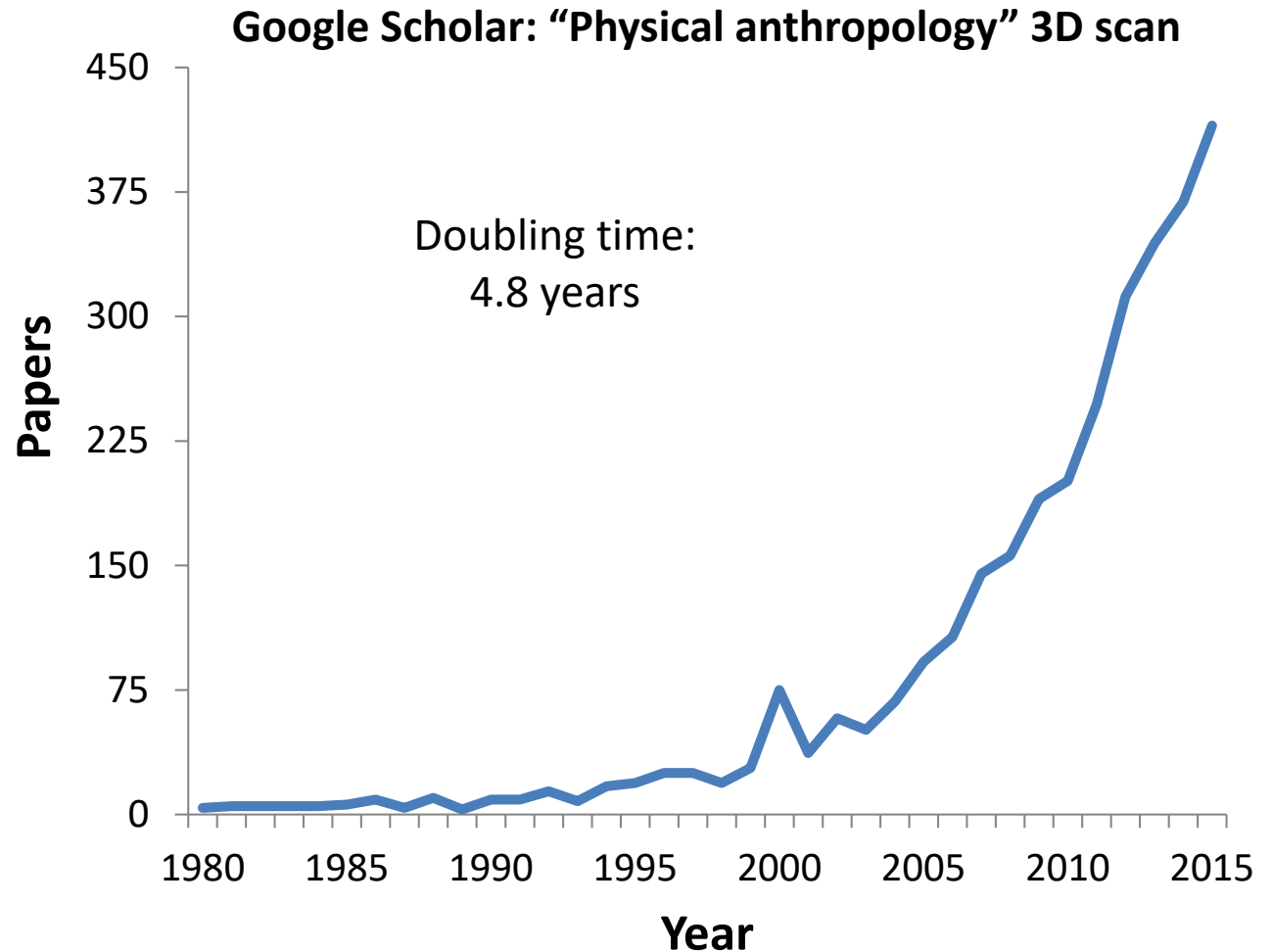
Outline

- Why do researchers need a repository for 3D data?
- How do researchers interact with MorphoSource?
- Sustainability and future growth



Why do we need a repository for 3D data?

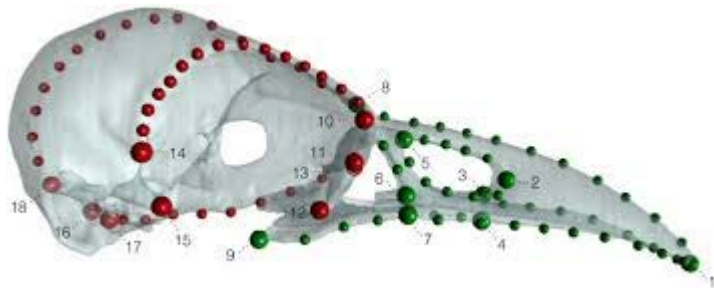
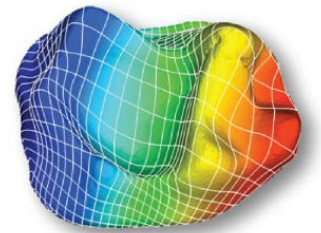
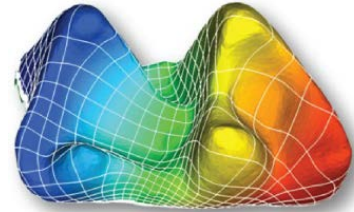
- 3D data are critical to research
- Transparency in science means access to these data
- Time consuming, costly, and risky to specimen
- Obligation to avoid taxing museums by rescanning specimens



Why do we need a repository for 3D data?

Benefits

- **Advance research** (quick access, bigger samples, more sophisticated analyses)
- **Support museums** (improved real & demonstrable value of collections, reduced demand for new scanning)
- **Empower science education** (access to previously off-limits collections)



Why not use generic archives?



- 'publication packet' organization
- Lack metadata specific to 3D formats and biological specimens
- Hinder accessibility, discoverability, and long term readability

Shouldn't museums host data on their specimens?



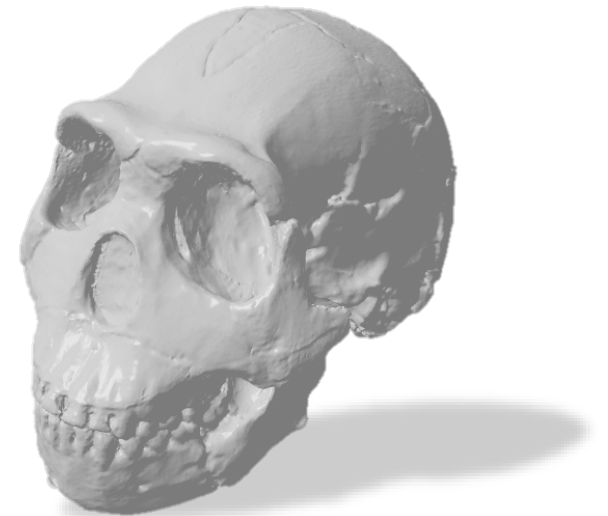
They should.....

- Costly to start and manage a digital archive
- Dividing data among isolated platforms limits discoverability
- Researchers need control of when and how they publish raw data
- Redundancy is not necessarily a bad thing



Outline

- Why do researchers need a repository for 3D data?
- **How do researchers interact with MorphoSource?**
- Sustainability and future growth




Homo naledi

Researchers contribute their datasets

Find & Download Datasets

BROWSE or

enter search terms 

Useful Info

- [Information for Users](#)
- [Information for Contributors](#)
- [Terms](#)
- [User Guide](#)


Interested in creating a MorphoSource project?

BECOME A CONTRIBUTOR

Researchers contribute their datasets

Find & Download Datasets

BROWSE or

enter search terms 

Useful Info

- [Information for Users](#)
- [Information for Contributors](#)
- [Terms](#)
- [User Guide](#)

CREATE A MORPHOSOURCE PROJECT

Researchers contribute their datasets

Project: AMNH Mammal Collection

BACK

0 Project Specimens

NEW SPECIMEN

Your project has no specimens. Use the "NEW SPECIMEN" button to add specimens, to which media may be added.

Researchers contribute their datasets

Project: AMNH Mammal Collection

BACK

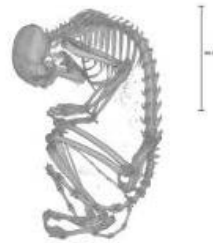
55 Project Specimens

NEW SPECIMEN

Group by: [Specimen Number](#) | [Genus](#) | [Species](#)



[AMNH-M-174360](#), *Microcebus rufus*
iDigBio [↗](#)



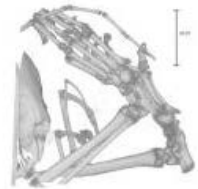
[AMNH-M-183285](#), *Callimico goeldii*
iDigBio [↗](#)



[AMNH-M-183291](#), *Callimico goeldii*
iDigBio [↗](#)



[AMNH-M-185280](#), *Callimico goeldii*
iDigBio [↗](#)



[AMNH-M-185640](#), *Daubentonia madagascariensis*
iDigBio [↗](#)



[AMNH-M-185643](#), *Daubentonia madagascariensis*
iDigBio [↗](#)



[AMNH-M-187861](#), *Cynocephalus volans*
iDigBio [↗](#)



[AMNH-M-188009](#), *Alouatta seniculus*

Researchers can obtain data GUIDs (DOIs)

DNMNH-G-22149, *Procavia* sp.



M6014-5467

3D Mesh (Polygon File Format), 92.61 MB

[Citation Elements](#)

ADD

Table 1
Astragali and calcanei attributed to *Anchomomys frontanyensis* and used in this study with information about each specimen and scanning details.

J. Marigó et al. / Journal of Human Evolution 91 (2016) 122–143

Specimen	Element	Side	MoSo media	Doi	File type	File size (MB)	x res ^a (mm)
IPS-7712	Astragalus	Left	M6345-6065	doi:10.17602/M2/M6065	Ply, mesh file	8.02	0.0085
IPS-7713	Astragalus	Left	M6346-6066	doi:10.17602/M2/M6066	Ply, mesh file	11.20	0.0065
IPS-7750	Astragalus	Right	M6347-6067	doi:10.17602/M2/M6067	Ply, mesh file	10.66	0.0091
IPS-7796	Astragalus	Right	M6348-6068	doi:10.17602/M2/M6068	Ply, mesh file	9.13	0.0091
IPS-7745	Calcaneus	Left	M6349-6069	doi:10.17602/M2/M6069	Ply, mesh file	11.21	0.0093
IPS-7748	Calcaneus	Right	M6351-6071	doi:10.17602/M2/M6070	Ply, mesh file	7.11	0.0079
IPS-7749	Calcaneus	Right	M6353-6072	doi:10.17602/M2/M6071	Ply, mesh file	10.07	0.0093
IPS-7751	Calcaneus	Right	M6354-6073	doi:10.17602/M2/M6072	Ply, mesh file	12.68	0.0079
IPS-7798	Calcaneus	Left	M6355-6074	doi:10.17602/M2/M6073	Ply, mesh file	12.42	0.0099
IPS-7799	Calcaneus	Right	M6356-6075	doi:10.17602/M2/M6074	Ply, mesh file	8.31	0.0099
IPS-7801	Calcaneus	Right	M6357-6076	doi:10.17602/M2/M6075	Ply, mesh file	11.02	0.0091
IPS-7984	Calcaneus	Left	M6358-6077	doi:10.17602/M2/M6076	Ply, mesh file	10.35	0.0079
IPS-7986	Calcaneus	Left	M6359-6078	doi:10.17602/M2/M6077	Ply, mesh file	5.97	0.0099
IPS-7987	Calcaneus	Left		doi:10.17602/M2/M6078	Ply, mesh file		0.0099

Locality of all specimens: Sant Jaume de Frontanyà-3C.
 Age: Middle Eocene, Robiacian (MP14–15).
 Scanning facility and scanner: Duke SMIF/Nikon XTH 225 ST
 Repository institution for physical specimens: Institut Català de Paleontologia Miquel Crusafont (ICP), Sabadell, Barcelona.
 Copyright holder: Institut Català de Paleontologia Miquel Crusafont (ICP), Sabadell.
 Copyright permission: Attribution-NonCommercial CC BY-NC – reuse but noncommercial.
 Copyright license: Permission to use media on MorphoSource granted by copyright holder.
 Citation instructions: Please cite DOI and specimen number of any files used.
 Citations: "Judith Marigó provided access to these data originally."
 Ministerio de Economía y Competitividad (Spanish Government) grants BCS1317525, NSF BCS 1440742 and NSF BCS 1440742.
^a res x,y,z gives dimensions of 3D model.

And/or increase accessibility of collections

Project: Digitizing the Florida Museum of Natural History's Herpetology collections

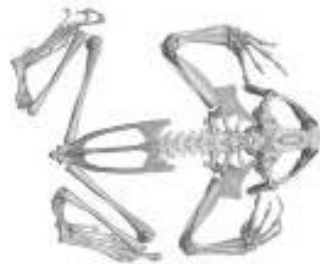
BACK

80 Project Specimens

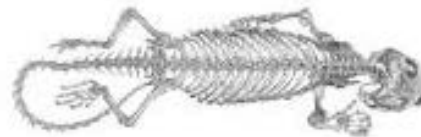
Order by: [Specimen number](#) | [Taxonomic name](#)



[UF-11978](#), *Sphenodon punctatus*



[UF-H-100788](#), *Spea multiplicata*



[UF-H-14110](#), *Sphenodon punctatus*



[UF-H-43506](#), *Kinosternon hirtipes tarascense*

Researchers control levels of access

Access

- On upload, data are hidden from public database.
- Data can be made visible with author-approved or open downloading.
- Reuse of shared data is regulated through cc licenses.



Anyone can get data from MorphoSource

Exploring specimens & media

Find & Download Datasets

BROWSE

or

Ptilocercus skull

Useful Info

- [Information for Users](#)
- [Information for Contributors](#)
- [Terms](#)
- [User Guide](#)

LOGIN OR REGISTER

Anyone can get data from MorphoSource

Exploring specimens & media

Media results for “Ptilocercus skull”

Jump to page: GO

17 results

◀ Previous page 1/3 Next ▶

OPTIONS ▶



ADD



ADD

M6508
[USNM-481103.](#)
[Ptilocercus lowii](#)
CT Volume Data
1 file



ADD

M6509
[USNM-481103.](#)
[Ptilocercus lowii](#)
CT Volume Data
2 files



ADD

M6516
[USNM-481103.](#)
[Ptilocercus lowii](#)
Reference photos
5 files

Specimen results

3 results

[USNM-481103. *Ptilocercus lowii*](#)
[USNM-481107. *Ptilocercus lowii*](#)
[USNM-488052. *Ptilocercus lowii*](#)

Data on MorphoSource

FOSSIL HOMININS

- 91 specimens of newly described South African hominin
- *Homo naledi* (eLife 2015)



The screenshot shows the MorphoSource website interface. At the top, there is a navigation bar with links for 'ABOUT', 'BROWSE', and 'DASHBOARD', along with a search bar and a 'LOGIN/REGISTER' link. Below the navigation bar, the page title is 'Project: Rising Star' with a 'BACK' button. The main content area displays '86 Project Specimens'. A sorting option is visible: 'Order by: Specimen number | Taxonomic name'. Below this, there is a grid of eight specimen images, each with a caption: 'Wits-Dinaledi-U.W. 101-001, Homo naledi', 'Wits-Dinaledi-U.W. 101-002, Homo naledi', 'Wits-Dinaledi-U.W. 101-004, Homo naledi', 'Wits-Dinaledi-U.W. 101-008, Homo naledi', 'Wits-Dinaledi-U.W. 101-018, Homo naledi', 'Wits-Dinaledi-U.W. 101-0283, Homo naledi', 'Wits-Dinaledi-U.W. 101-033, Homo naledi', and 'Wits-Dinaledi-U.W. 101-0396, Homo naledi'.

Data on MorphoSource

PRIMATES

- ~1000 primate skulls
- 95% of all species
- (Nature Scientific Data, 2016)



Media results

Jump to page: GO 311 results [Previous](#) [page 1/39](#) [Next](#)

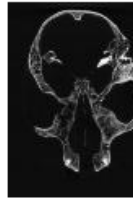
OPTIONS



M2601
[MCZ-25626](#),
[Cercocebus torquatus](#)
DICOM medical
imaging data image
series ZIP file
3.01 MB



M2602
[MCZ-25630](#),
[Cercocebus torquatus](#)
DICOM medical
imaging data image
series ZIP file
2.59 MB



M2852
[MCZ-62639](#),
[Cercocebus torquatus](#)
DICOM medical
imaging data image
series ZIP file
2.63 MB



M2853
[MCZ-32625](#),
[Cercocebus torquatus](#)
DICOM medical
imaging data image
series ZIP file
3.47 MB



M2854
[MCZ-32624](#),
[Cercocebus torquatus](#)
DICOM medical
imaging data image
series ZIP file
3.44 MB



M2860
[MCZ-23195](#),
[Cercocebus sp.](#)
DICOM medical
imaging data image
series ZIP file
2.82 MB



M2861
[MCZ-19982](#),
[Cercocebus torquatus](#)
DICOM medical
imaging data image
series ZIP file
3.52 MB



M2862
[MCZ-19184](#),
[Cercocebus torquatus](#)
DICOM medical
imaging data image
series ZIP file
3.54 MB

Specimen results

308 results

[MCZ-10131](#), [Saimiri oerstedii](#)
[MCZ-10132](#), [Saimiri oerstedii](#)
[MCZ-10133](#), [Saimiri oerstedii](#)
[MCZ-10134](#), [Saimiri oerstedii](#)
[MCZ-10138](#), [Ateles geoffroyi](#)
[MCZ-12758](#), [Macaca fascicularis](#)
[MCZ-14657](#), [Euoticus elegantulus](#)
[MCZ-14659](#), [Galago alleni](#)
[MCZ-14725](#), [Cercocebus albigena](#)
[MCZ-15312](#), [Pan troglodytes troglodytes](#)
[MCZ-15324](#), [Saguinus sp.](#)
[MCZ-16075](#), [Galago senegalensis](#)
[MCZ-16354](#), [Eulemur fulvus fulvus](#)
[MCZ-16356](#), [Eulemur fulvus rufus](#)
[MCZ-16370](#), [Eulemur fulvus rufus](#)
[MCZ-16375](#), [Propithecus verreauxi](#)
[verreauxi](#)
[MCZ-16382](#), [Varecia variegata variegata](#)
[MCZ-16390](#),
[MCZ-16391](#), [Lemur catta](#)
[MCZ-16392](#), [Lemur catta](#)
[MCZ-16393](#), [Eulemur fulvus rufus](#)
[MCZ-17548](#), [Perodicticus potto](#)
[MCZ-17550](#), [Perodicticus potto](#)
[MCZ-17589](#), [Galago alleni](#)
[MCZ-17590](#), [Euoticus elegantulus](#)
[MCZ-17591](#), [Euoticus elegantulus](#)
[MCZ-17592](#), [Euoticus elegantulus](#)
[MCZ-17593](#), [Euoticus elegantulus](#)
[MCZ-18607](#), [Perodicticus potto](#)

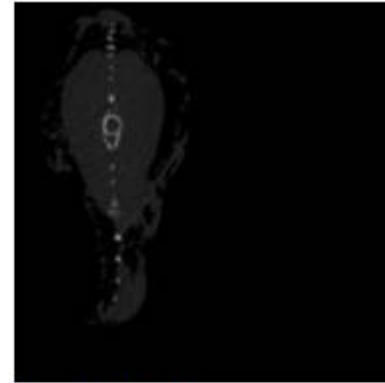
Data on MorphoSource

FISH

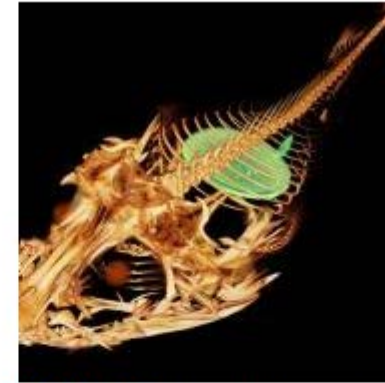
- Sharks
- Rays
- Teleosts



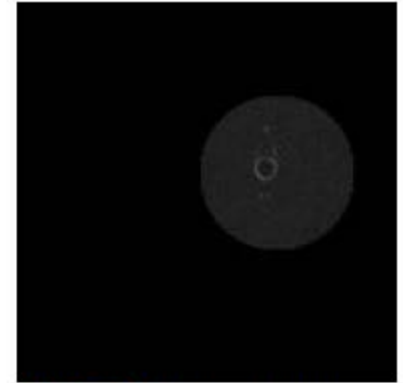
[BMNH-2001.1.21.58-71](#),
Gastromyzon borneensis



[OSU-013876](#), *Cottus asper*



[ROM-50997](#), *Chorisochismus dentex*



[TCWC-11247.01](#), *Mystus armatus*



[TCWC-13988.05](#), *Corydoras* sp.



[TCWC-16994.04](#), *Cyprinella lepida*



[TCWC-UnCat](#)



[UW-118012](#), *Artediellus camchaticus*

Data on MorphoSource

INVERTEBRATES

- Beetles, Bees, Centipedes, Molluscs

Specimen Media



[M1642](#), New centipede source images
unknown image series ZIP file, 1.86
GB

Specimen Information

Specimen: CBSS-CHP517-1, *Eupolybothrus cavemicolus*,
Unvouchered, Female

The Croatian Biospeleological Society (CBSS) is non-governmental, non-profit organization acknowledged, registered and supported by Ministry of Science, Education and Sport that has been working successfully since its foundation in 1996. It is an organization for biospeleology that deals with research and conservation of subterranean fauna and its habitats on the whole territory of the Republic of Croatia with its members being both scientists, experts and cavers.

Locality: country: Croatia; stateProvince: Knin; locality: NP Krka, village Kistanje, Hydroelectric power plant Miljacka, cave Miljacka II; verbatimElevation: 115 m;
44.000306, 16.016250

Institution: Croatian Biospeleological Society (CBSS), Zagreb,
Croatia



Educational Collections

MORPHO SOURCE

ABOUT | BROWSE | DASHBOARD | K-12 HUMAN EVOLUTION | MEDIA CART | STATS | MANAGE: BIBLIOGRAPHY | FACILITIES | INSTITUTIONS | PROJECTS | TAXONOMY | SPECIMEN | USERS | STATS











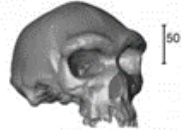

K-12 Human Evolution

MEDIA | BIBLIOGRAPHY | TAXONOMY | FACILITIES

42 Project Specimens

VIEW AS LIST | NEW SPECIMEN

Order by: Specimen number | Taxonomic name

 EA-CCC-01, <i>Pan troglodytes</i>	 EA-CCC-02, <i>Australopithecus africanus</i>	 EA-CCC-03, <i>Australopithecus boisei</i>	 EA-CCC-04, <i>Homo habilis</i>
 EA-CCC-05, <i>Homo erectus</i>	 EA-CCC-06, <i>Homo erectus</i>	 EA-CCC-07, <i>Homo neanderthalensis</i>	 EA-CHC-01, <i>Homo sapiens</i>
 EA-DCC-01, <i>Australopithecus afarensis</i>	 EA-DCC-02, <i>Australopithecus boisei</i>	 EA-DCC-03, <i>Homo heidelbergensis</i>	 EA-HC-01, <i>Homo sapiens</i>

25,000 views, 2,200 downloads



Leveraging other work

- See talk by **Winchester et al.** today

VerNe



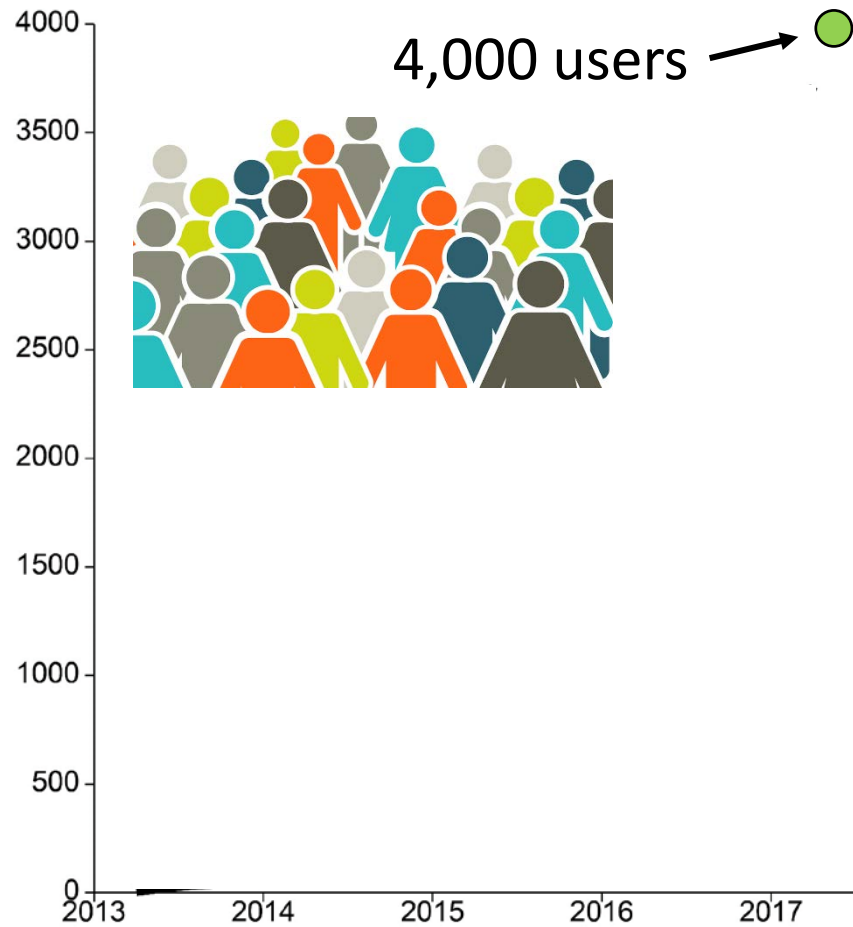
PBDB



GRBio
GLOBAL
REGISTRY OF
BIODIVERSITY
REPOSITORIES

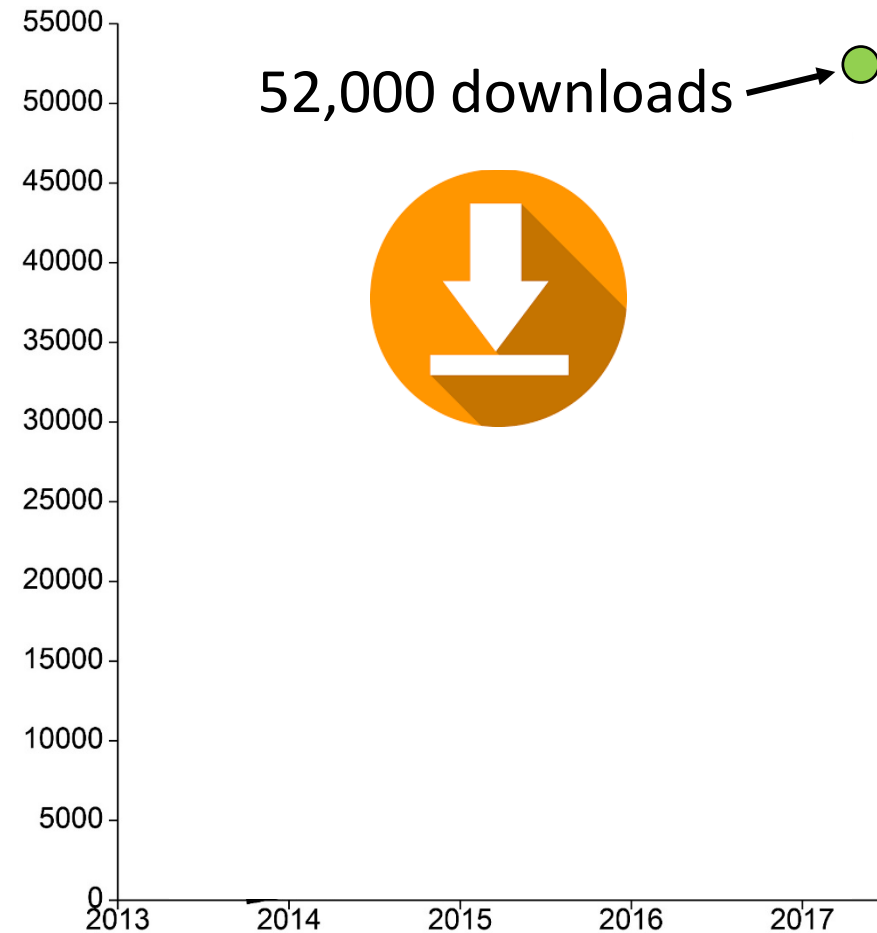
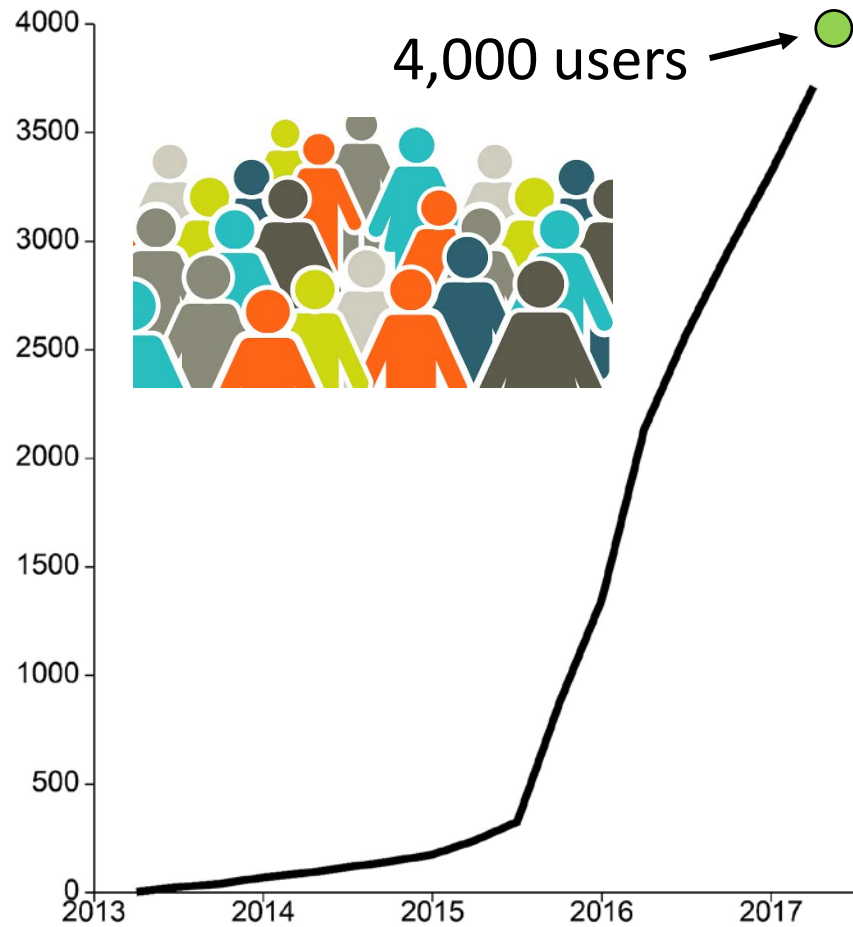
Is MorphoSource being used?

User/use growth since 2013 (quarterly data)



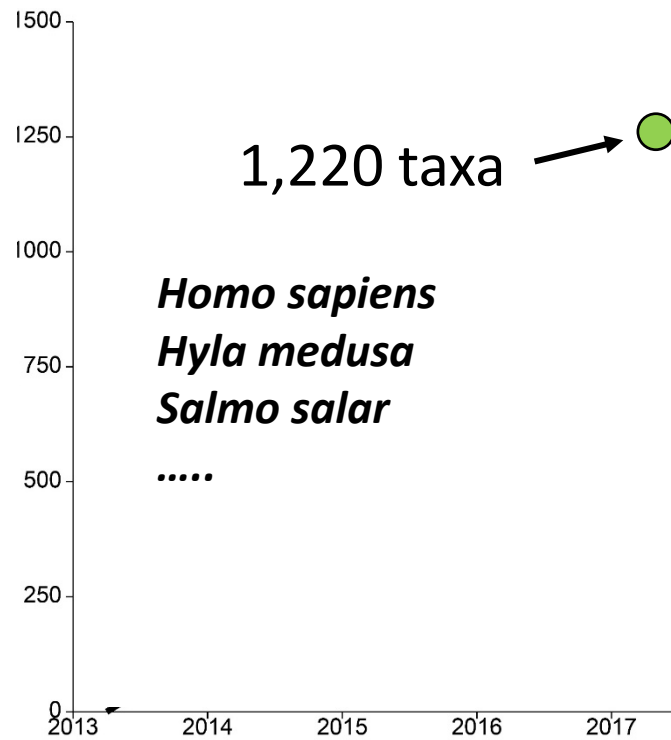
Is MorphoSource being used?

User/use growth since 2013 (quarterly data)



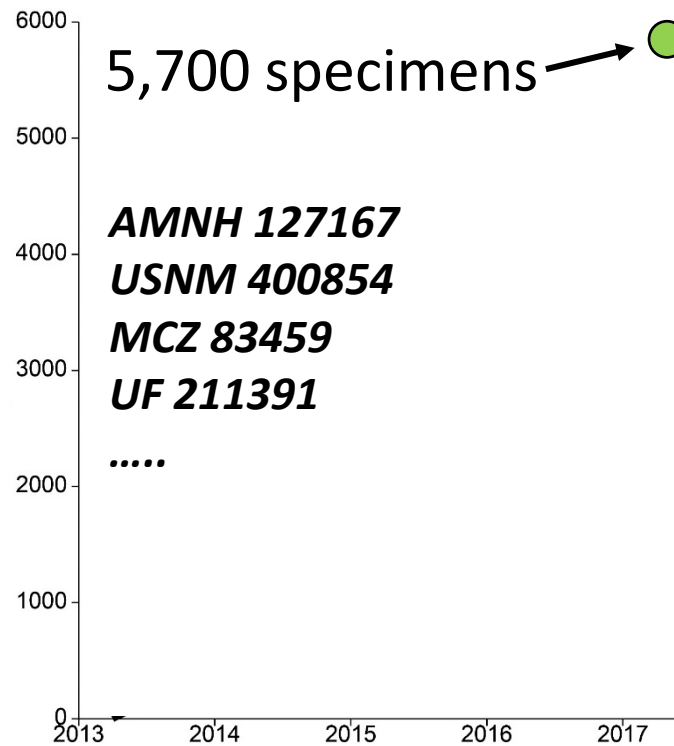
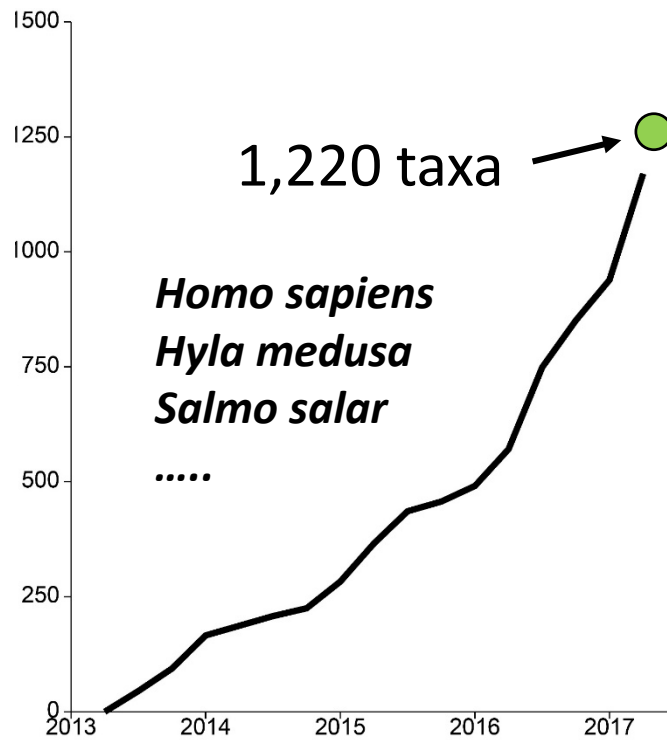
Is MorphoSource being used?

Growth of holdings since 2013 (quarterly data)



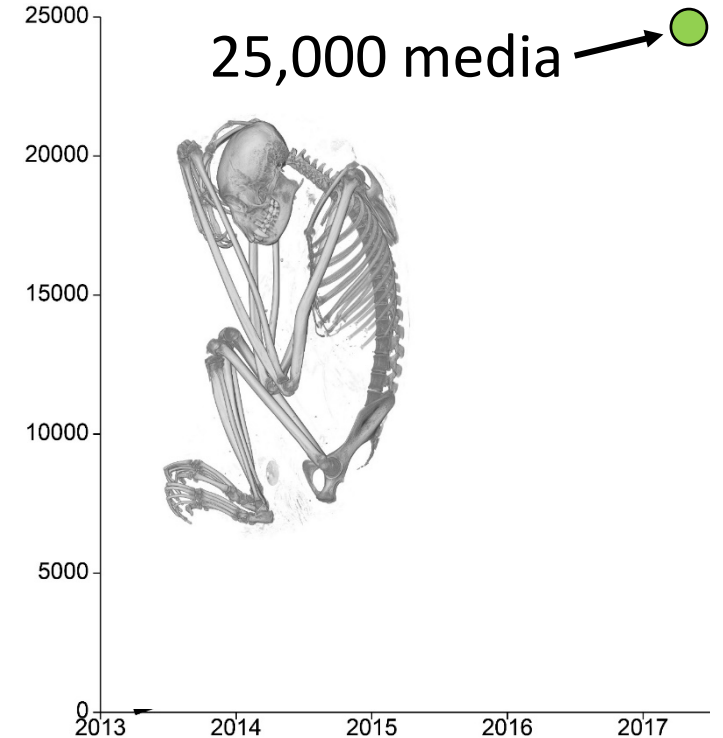
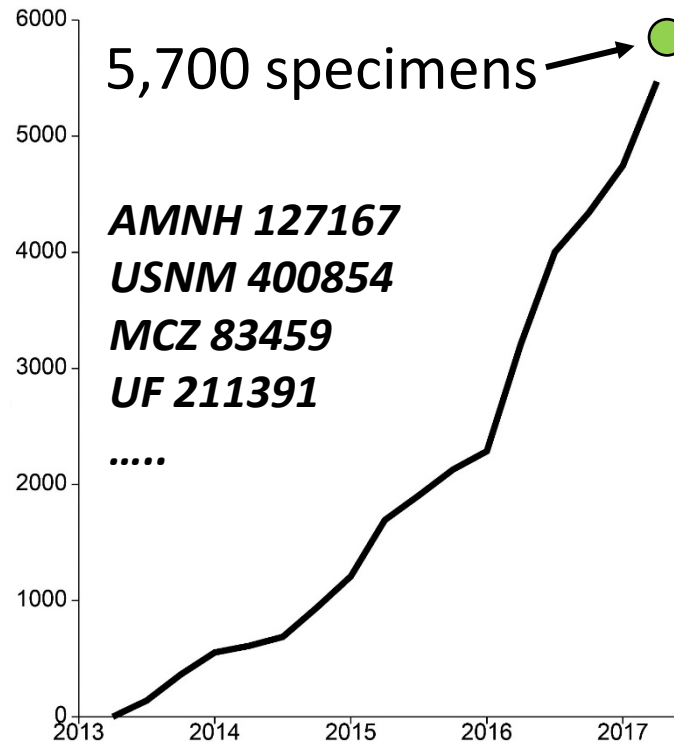
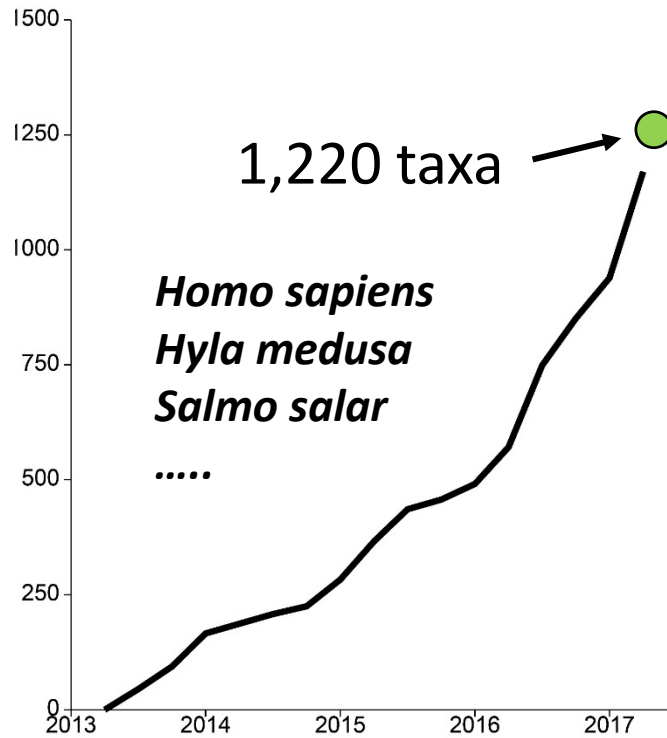
Is MorphoSource being used?

Growth of holdings since 2013 (quarterly data)



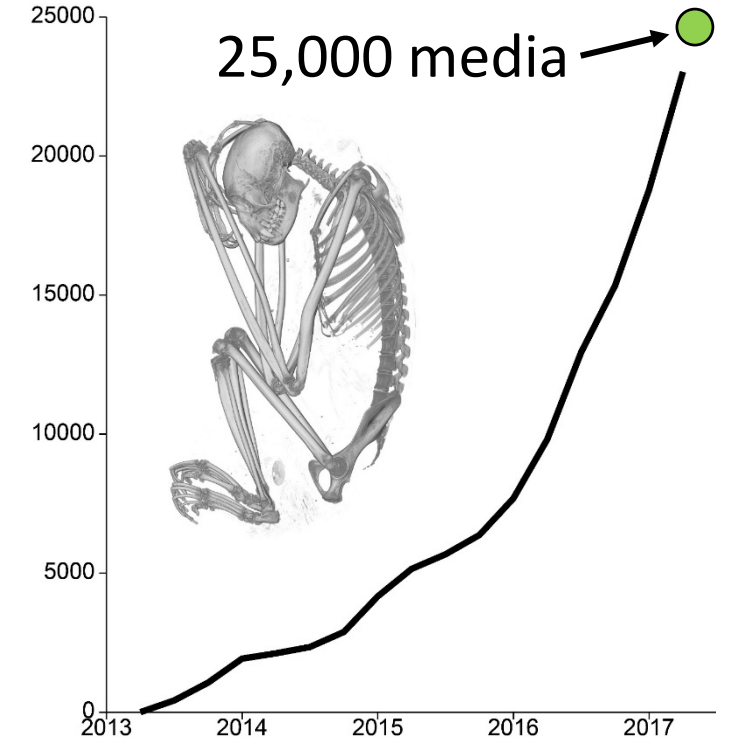
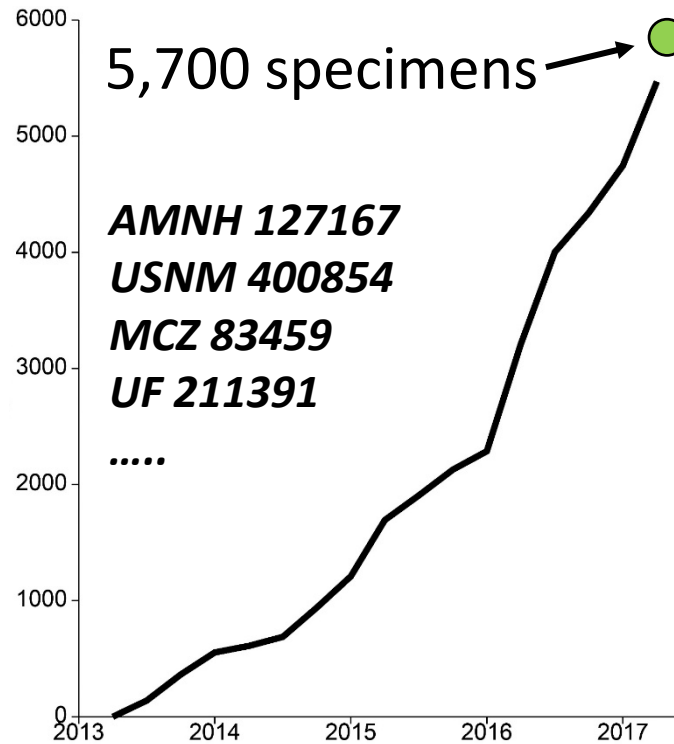
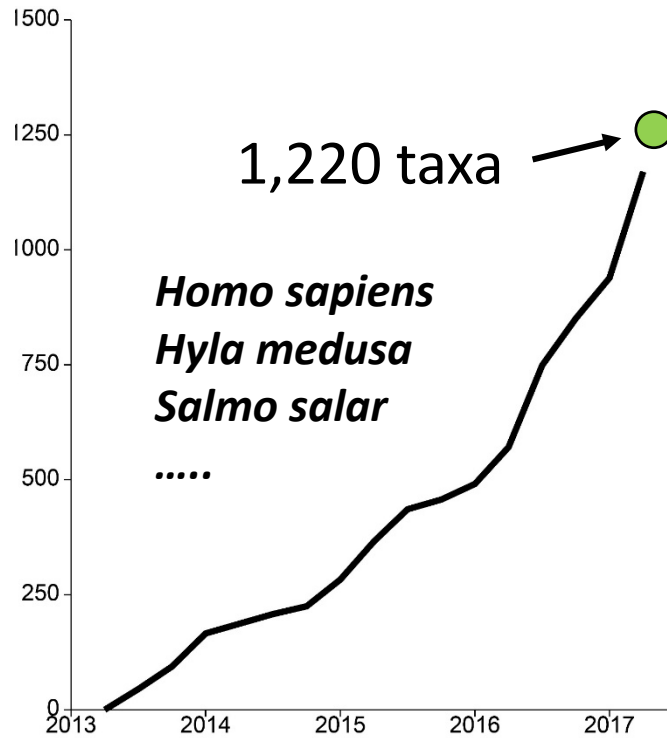
Is MorphoSource being used?

Growth of holdings since 2013 (quarterly data)



Is MorphoSource being used?

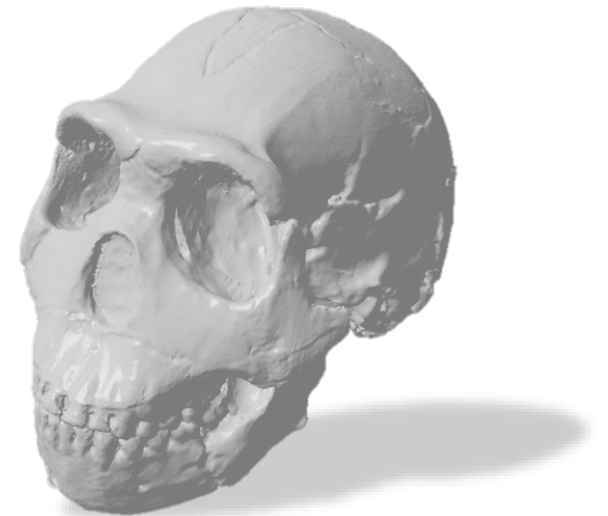
Growth of holdings since 2013 (quarterly data)





Outline

- Why do researchers need a repository for 3D data?
- How do researchers interact with MorphoSource?
- **Sustainability and future growth**



Homo naledi

Growth

Storage

- MorphoSource occupies 15Tb with 25,000 datasets
- Cleared for 10Tb/year growth by Duke
- But one project alone (oVert) could add 30Tb in 5 yrs
- Plan???





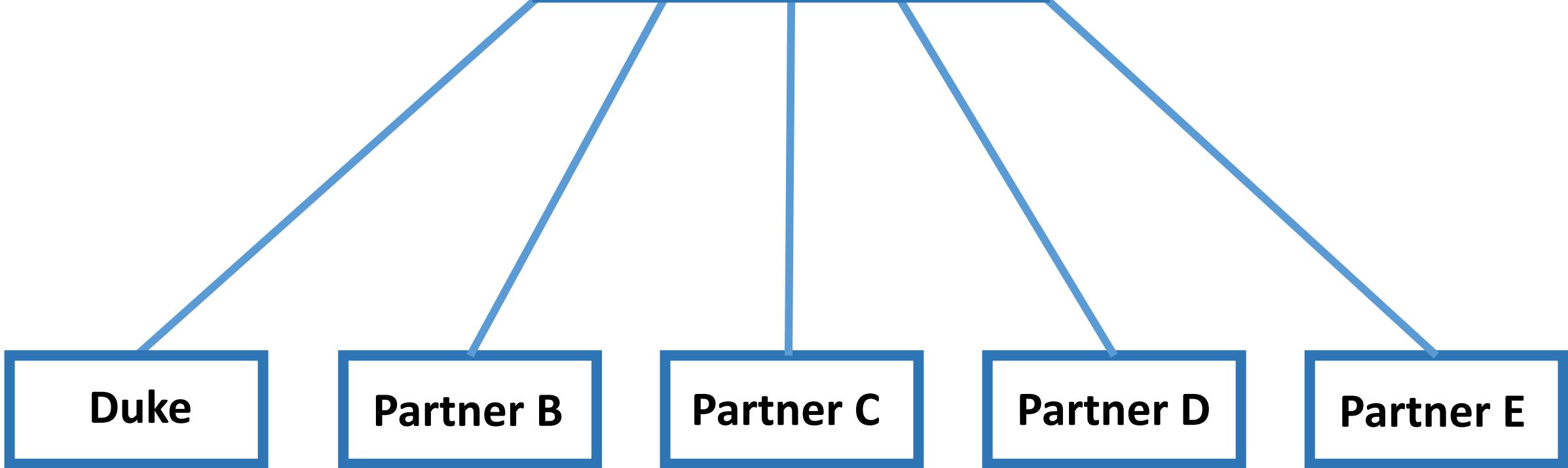
Growth

Many hands make light work

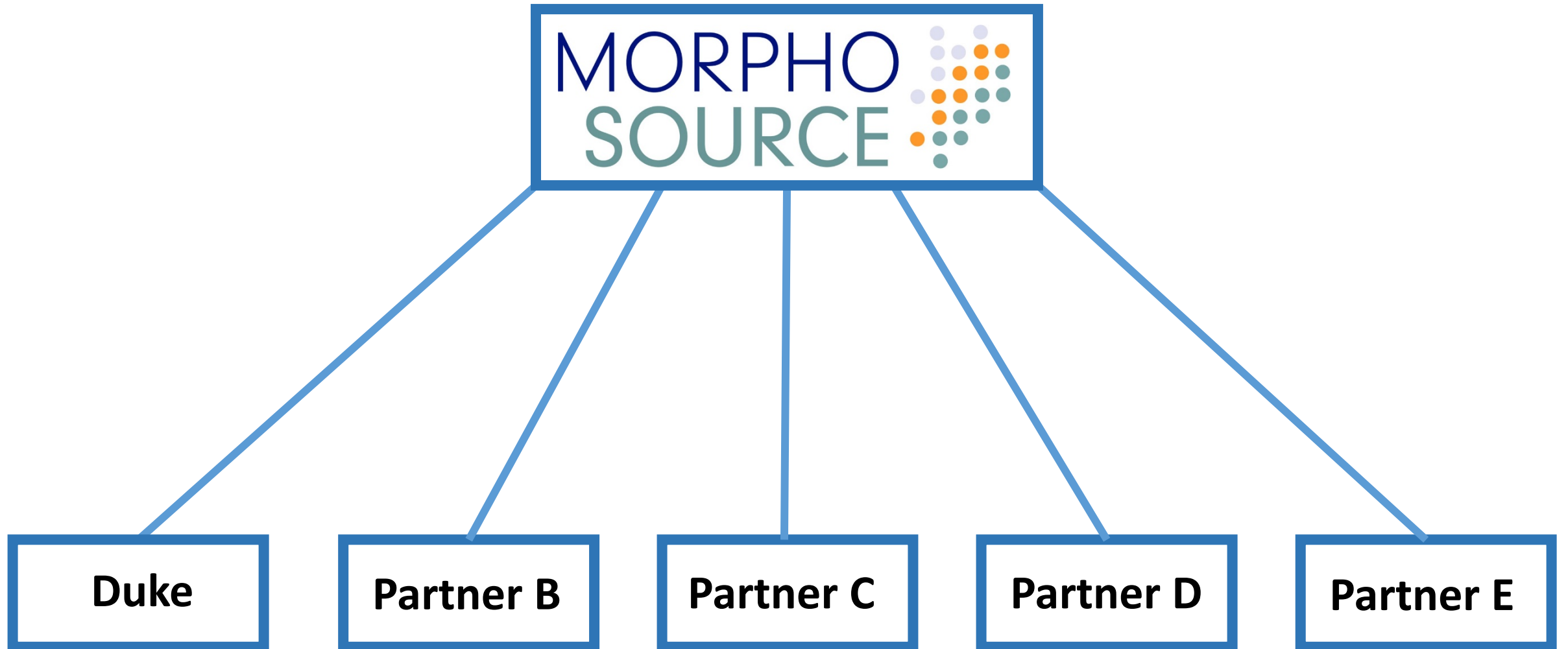
Grow through addition of consortium members who provide a finite storage commitment



Growth



How?



How?



Leverage state-of-the-art open access digital repository platforms

Duke

Partner B

Partner C

Partner D

Partner E

How?

MORPHO
SOURCE



DUKE UNIVERSITY
LIBRARIES

**Leverage state-of-the-
art open access digital repository
platforms**

Duke

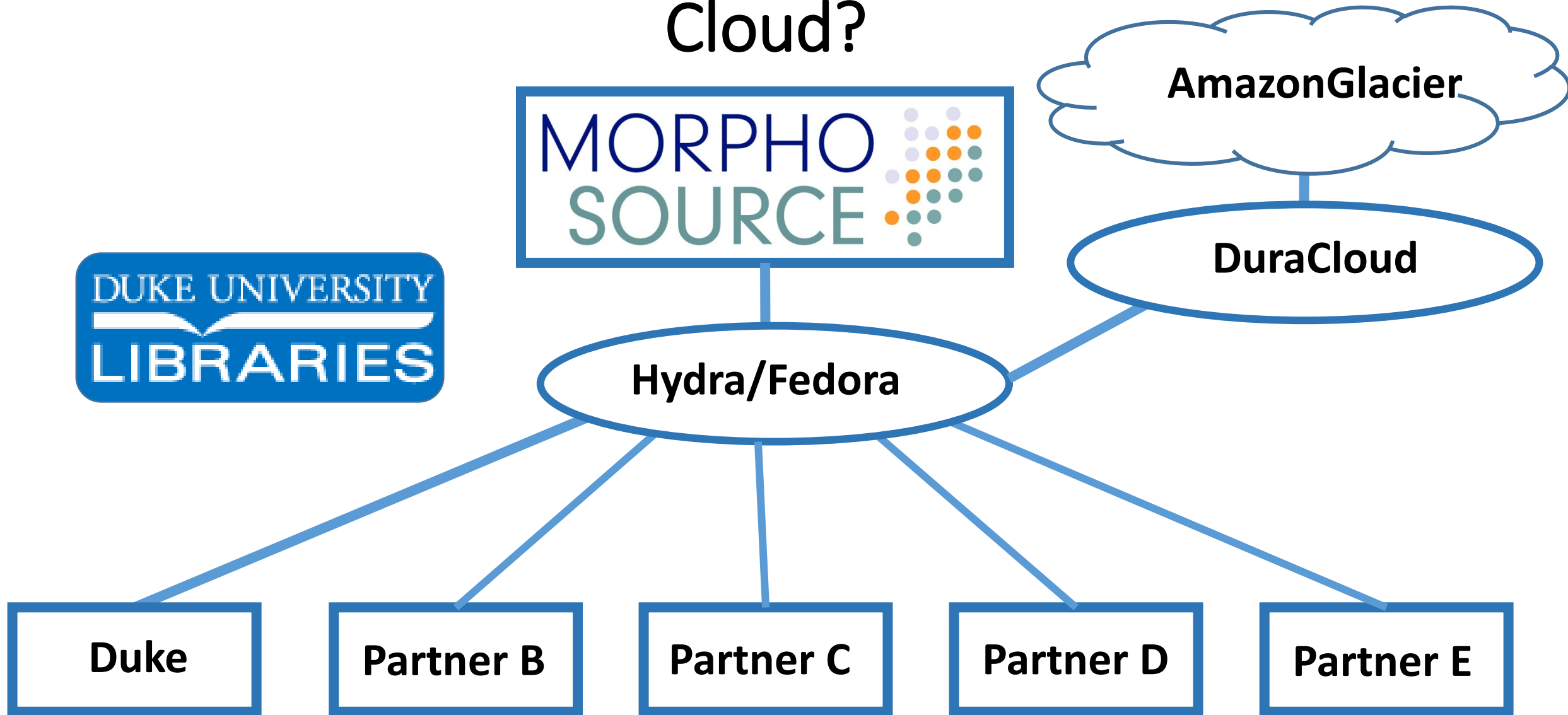
Partner B

Partner C

Partner D

Partner E

Cloud?



The open source parts and their functions

Fedora ([Fedorarepository.org](https://fedorarepository.org))

- Digital Asset Management platform
- Allows integration of multiple data nodes



Hydra (projecthydra.org)

- Provides the database structure for interacting with Fedora



DuraCloud (duracloud.org)

- Provides bitrot prevention
- Manages full redundant cloud copy through Amazon Glacier
- Provides integration with Archivematica



MORPHO SOURCE

Summary

- **3D data are now vital** and maximizing their accessibility and discoverability will be transformative
- **MorphoSource archives 3D data on vouchered specimens** for any researcher and serves it in a setting that emulates a museum collection.
- **An integrated effort is needed** to manage preservation of 3D digital data from museums.



55 Project Specimens

NEW SPECIMEN

Group by: [Specimen Number](#) | [Genus](#) | [Species](#)



[AMNH-M-174360](#), *Microcebus rufus*
iDigBio



[AMNH-M-183285](#), *Callimico goeldii*



[AMNH-M-183291](#), *Callimico goeldii*



[AMNH-M-185280](#), *Callimico goeldii*
iDigBio





Acknowledgments



- Gil Nelson, iDigBio, conference organizers

For support & funding of MorphoSource Development

- Duke University Trinity College of Arts & Sciences (major funder so far)
- Duke Shared Materials Instrumentation Facility
- Duke Biology IT Center

For discussion leading to development of concepts

- Jukka Jernvall, Alistair Evans, Gudrun Evans, David Blackburn, Edward Stanley, James Thostenson, Jocelyn Sessa, Maureen O'Leary, Mark Uhen, Gabriel Yapuncich

For work developing and populating MorphoSource

- Maria Passarotti (Whirl-i-gig, Inc.)
- Alex Thompson, Kevin Love, Dan Stoner (iDigBio)
- Technicians & students: Mackenzie Nieto-Aguilar, Darbi Griffith, Ana Galvez, Miles Schaeffer, Mercedes Zapata-Garcia, Shane Daly, Sunghoon Liu, Ksenia Sokolova, Anne Driscoll, Kevin Vo, Annie Lott, Callie Crawford, and many more