

Invertebrate Collections: Fish and Wildlife Research Institute

PAUL LARSON

FISH AND WILDLIFE RESEARCH INSTITUTE

DIGIN MEETING 2/4/2019-2/5/2019

Florida Fish and Wildlife
Conservation Commission
Specimen Information Services



Organization

Florida Fish and Wildlife Conservation Commission

- Fish and Wildlife Research Institute
 - Information Science & Management
 - Research Information Services
 - Data Access
 - Research Information Center
 - Specimen Information Services
 - Communications

Staffing

Permanent Invertebrate staff:

- Curator of Collections: Paul Larson (2 yrs)
- Collection Manager: Laura Wiggins (6 years)
- Collection Technician: Haley Holloway <1 month

Other Permanent Staff:

- Curator: Paul Larson (<1yr)
- Ichthyo. Collection Manager: Eric Post (2 yrs)

Contract staff (Through University of Florida):

- Ichthyoplankton Database Manager: Janessa Fletcher
- Ichthyoplankton Collection Manager: Kelly Hoolihan

Infrastructure:

Building: Former Merchant Marine Barracks (ca. 1920s)

52 rows of compacted shelves (incl. Ichthyo)

3484 Sq. feet

4 office areas, 2 sorting areas

Building issues: Scattered staff due to mold (Remediation plan pending new roof, new windows). –specimens unaffected.

2 -80 Freezers for tissue storage



Curation

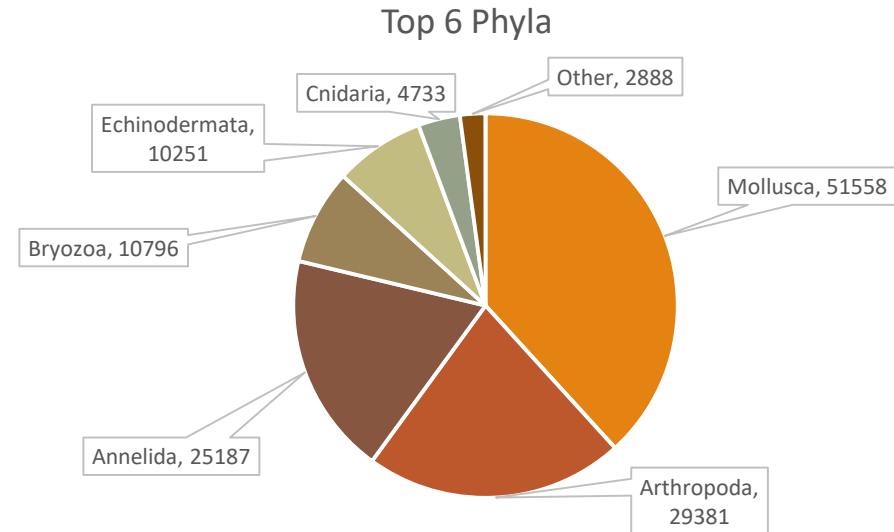
Invertebrates

- 136,221 cataloged lots (2/3/2019)
 - ~700,000 specimens
- Recent transition to Specify 7 (Dec. 2018)
 - Invertebrates only – Fishes in progress
- Uncataloged Lots
 - Identified, uncataloged (~36,000 lots)
 - Unidentified, uncataloged (~40,000 lots)

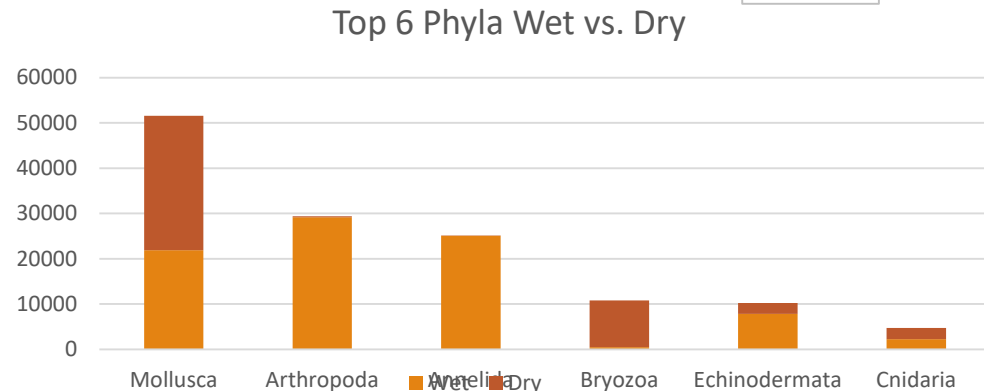


Coverage (Taxonomic)

Taxon	% Family	% Genus	% Species
Annelida	96.6	79.3	65.4
Arthropoda	98.7	97.1	75.0
Bryozoa	87.9	85.2	57.8
Cnidaria	96.8	95.6	81.8
Echinodermata	94.6	93.8	84.9
Mollusca	98.9	87.9	74.0



- Dry Specimens
- Wet Specimens (70% EtOH preserved)
 - Formalin fixed (until early-mid 2000s or so)
 - Unfixed mid 2000s – beyond
- Tissues (-80°C Frozen)
 - 615 tissues in 95% EtOH

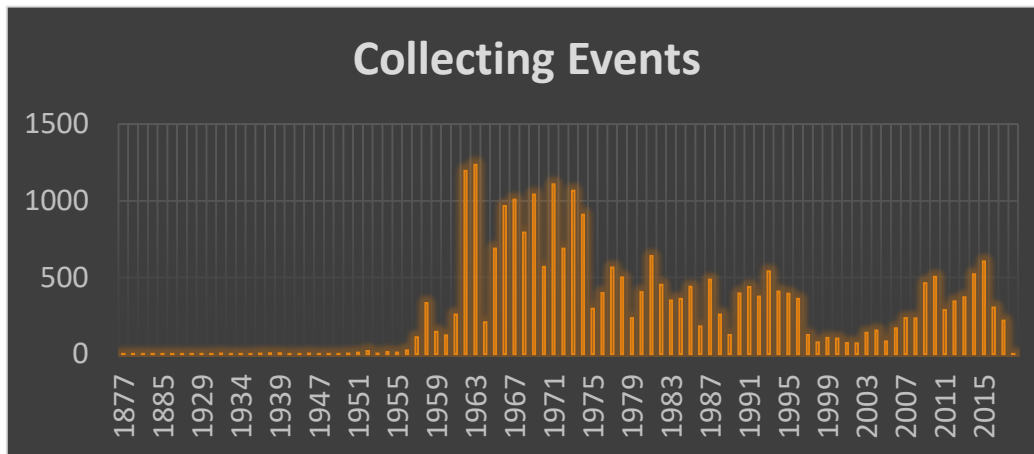


Coverage (Geo. & Temporal)

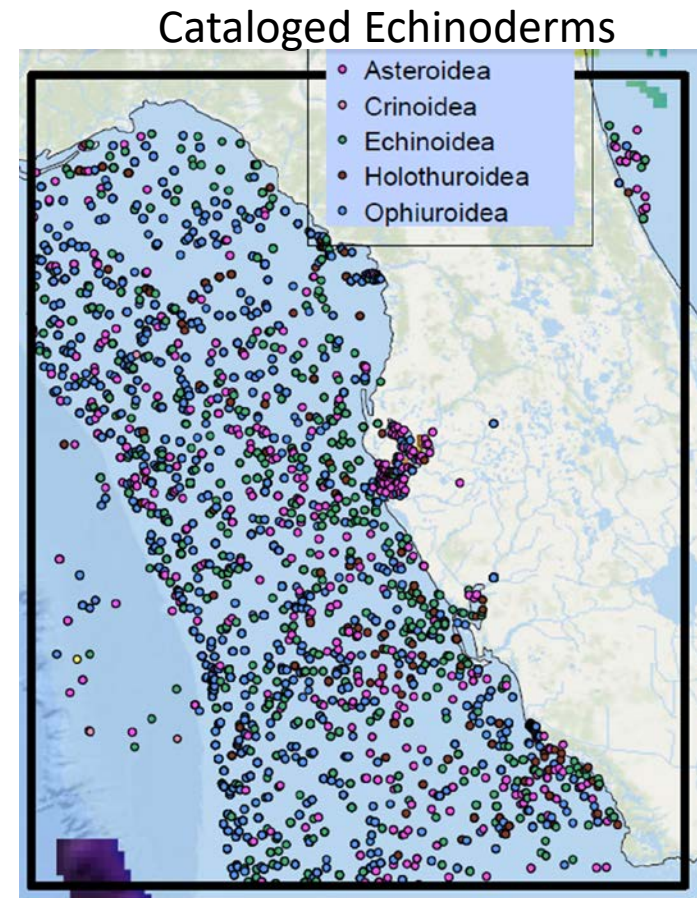
Strongly Florida-centric, Gulf of Mexico

Sporadic collections from world-wide localities

Weaker: State-wide estuaries, Atlantic Coast



- New collections mainly from SEAMAP program and sampling activities by SIS staff



Digitization

Past grants:

- None (as far as I'm aware)
- Challenges
 - Time & Staffing / building problems
- Cataloged lots all digitized
- Past efforts
 - 3-year specimen inventory (~2012-2015)
 - Sporadically, as time permits
 - Scanning old (hand-written) labels, field data sheets, etc.
- Where are we heading?
 - Nowhere currently... busy Getting databases migrated to Specify, Staffing reduction
- Goals
 - Georeference all cataloged lots
 - Photo digitization of select specimens
 - Uncataloged lots with field data and determinations waiting for ID (backlog)
 - Online searchable portal (a la FLMNH specify portal)