

NEW INNOVATIVE APPROACHES TO COLLECTION DATA ENTRY AND DATA STORAGE

***ANDY BENTLEY, SPECIFY PROJECT
UNIVERSITY OF KANSAS BIODIVERSITY INSTITUTE
LAWRENCE, KS***





What is Specify?

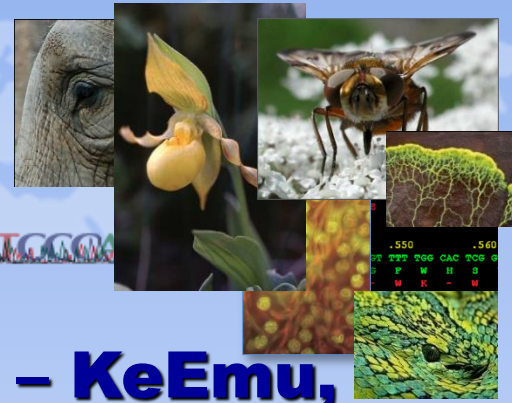


- **ALLOWS FOR efficient computerization and management of biological collections and mobilization of specimen information onto the Internet.**
- **CONSISTS OF a highly customizable, forms-based interface, powerful querying tools and robust report designer for printed output.**
- **AIMS TO advance biological collections computing, communication, and collaboration through software and services provided.**
- **FREE - Distributed and licensed at no charge for non-profit collections.**

<http://specifysoftware.org>

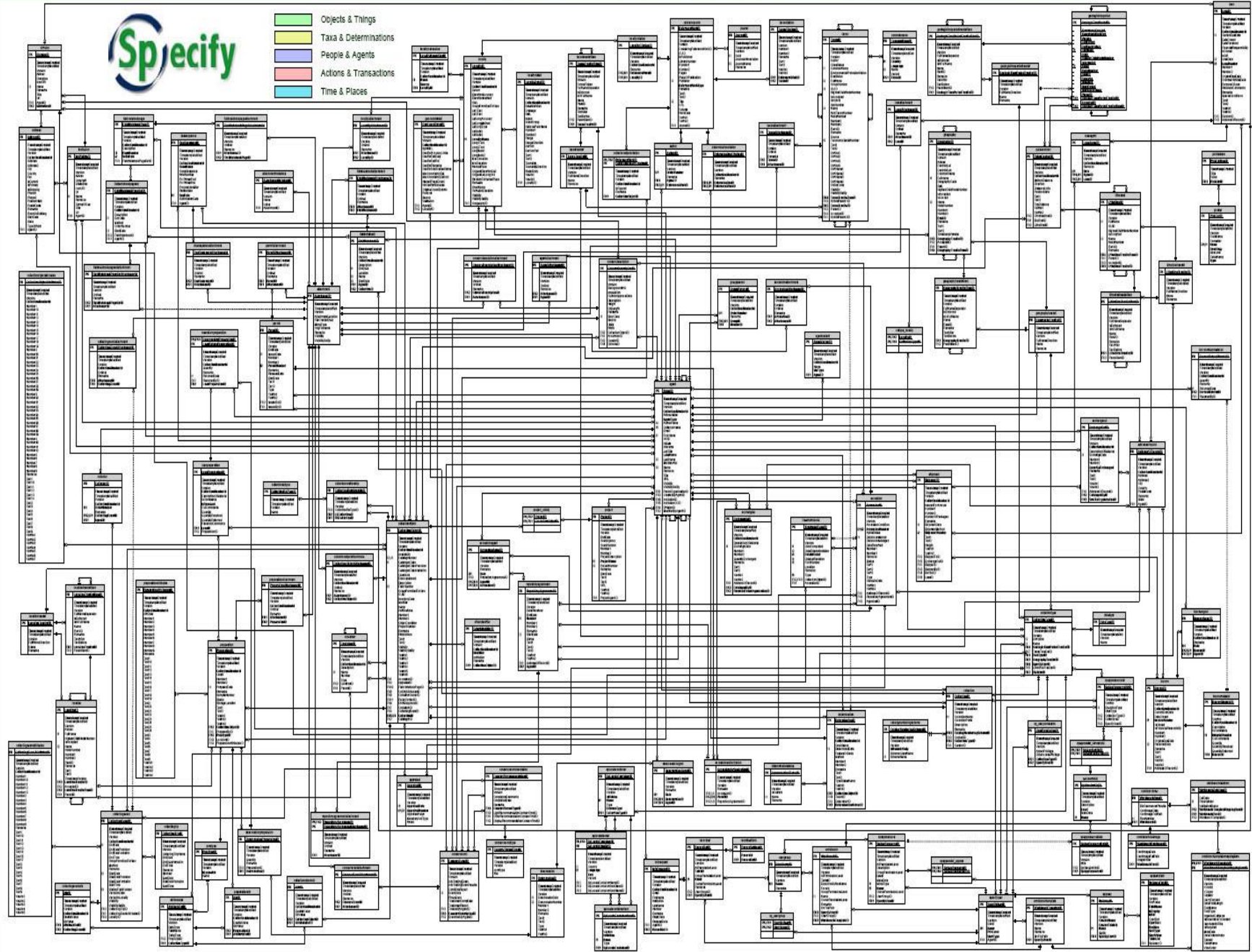


Specify 6



- **Many other systems out there – KeEmu, Past Perfect, Index Kentukiensis, Collections Space, Mantis, Multi-Mimsy etc.**
- **Most have limitations or cost prohibitions for small to medium sized museums**
 - **Cost**
 - **Flexibility and customization**
 - **All disciplines ***
 - **Open source – community driven**
 - **Wealth of features**
 - **Support and longevity**

Specify 6 Database Schema

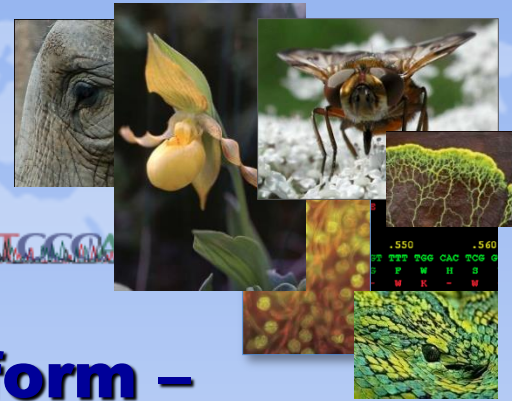




- **Representation of all Natural History disciplines**
 - **Over 435 collections in 29 countries**
 - **Over 160 US institutions in 48 states**
 - **Over 10 million specimens cataloged**
 - **Increasing all the time**



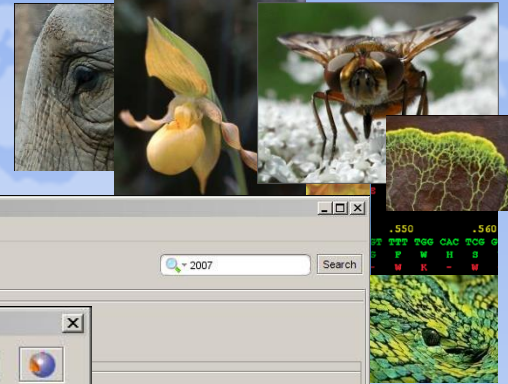
Specify 6



- **Collections management platform – pluggable components**
- **Multi-collection/discipline capable**
- **3rd party applications - GEOLocate, Google Earth**
- **Web services and online providers – ITIS, Fishbase, Lifemapper**
- **Strategic Partnerships – Filtered push (Harvard), botanical OCR (Michigan), image bank (MorphBank) and DNA (BCoL)**
- **Staged, frequent releases with added functionality – smart update**



Data entry



Specify Beta 6.2.39

File Edit Data System Tabs Debug Help

Welcome Data Entry Trees Reports Interactions Statistics Query WorldBench

Create/Update

- Collection Object
- Collecting Event
- Taxon
- Agent
- Geography
- Locality
- More Forms

Record Sets

Collection Object

Catalog Number: #####

Accession: _____

Determinations

Preferred Taxon: _____

Taxon: _____

Alternate Name: _____

Type Status Name: _____

Remarks: _____

Collecting Event: _____

Preparations

Attachments

Modified By Agent: _____

Sp Edit Node Values

Name: calva

Sp Locality

Locality Name: Lawrence, 5 miles West

Sp Choose an Item

Choose item or add a new one

Add...

- EOW 02-2; 05/03/2
- EOW 02-3; 05/04/2
- EOW 76-1; 06/06/1
- EOW 76-2; 06/07/1
- EOW 76-3; 06/07/1
- EOW 76-4; 06/11/1
- EOW 76-5; 06/11/1
- EOW 76-6; 06/11/1
- EOW 76-7; 06/11/1
- EOW 77-01; 06/13/1
- EOW 77-01a; 06/13/1
- EOW 77-02; 06/17/1
- EOW 77-02a; 06/17/1
- EOW 77-02b; 06/17/1
- EOW 77-03; 06/13/1
- EOW 77-03a; 06/13/1
- EOW 77-03b; 06/13/1
- EOW 77-1; 06/12/1

Etkeostoma

- Etkeostoma (splendidum-ms)
- Etkeostoma acuticeps
- Etkeostoma aquali
- Etkeostoma artesiae
- Etkeostoma asprigene
- Etkeostoma atripinne
- Etkeostoma australe
- Etkeostoma baileyi
- Etkeostoma barbouri
- Etkeostoma barrenense
- Etkeostoma beanii
- Etkeostoma bellum
- Etkeostoma bifascia
- Etkeostoma blennioides
- Etkeostoma blennioides newmani
- Etkeostoma blennioides x E. newmani
- Etkeostoma blennius

OK Cancel

Sp Attachments

Attachments

Save Cancel Help

1 of 1

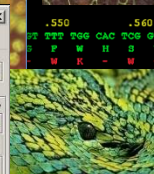
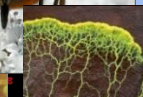
Trash

Ichthyology Main Fish testuser



CCITCAG

Trees



Specify Beta 6.2.30

File Edit Data System Tabs Debug Help

Welcome Data Entry Trees Reports Interactions Statistics Query WorkBench

Edit Trees

- Geography
- Storage
- Taxon

Edit Tree Definitions

- Geography
- Storage
- Taxon

Unlock a Tree

- Geography
- Storage
- Taxon

Fish

Name	Remarks	In Full Name	Enforced
Taxonomy Root		No	Yes
Kingdom		No	Yes
Subkingdom		No	No
Phylum		No	Yes
Subphylum		No	No
Superclass		No	No
Class		No	Yes
Subclass		No	No
Infraclass		No	No
Superorder		No	No
Order		No	Yes
Suborder		No	No
Infraorder		No	No
Superfamily		No	No
Family		No	Yes
Subfamily		No	No
Tribe		No	No
Subtribe		No	No
Genus		Yes	Yes
Subgenus		No	No
Species		Yes	No
Subspecies		Yes	No

Find: Percina Find Next

Trash

Ichthyology | Main Fish | testuser

1

Euryale tembulak (Alexander) G. N. Sauer
 U. S. Bot. Garden, Dept. 2000
 41. Washington, D. C. 20040
 University of Florida, Gainesville, Florida 32611

ANNOTATION LABEL

Aster paludosus AT,
 ssp. hemisphaericus (Aster,
 In Small Group,
 Det. Kenneth L. Johnson 22 Oct. 1969

PLANTS OF ARKANSAS
 Collected by Schile Donnell
DEWE County

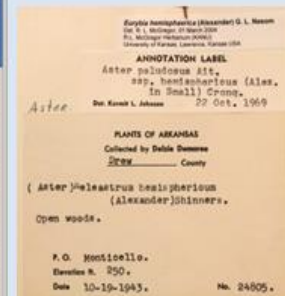
(Aster) Euryale tembulak sphaerophorum
 (Alexander) Johnson.

Open woods.

F.O. Monticello,
 Elevation 8, 950.
 Date 10-19-1943, No. 24805.



Serials	Family	Genus	Species	Predilection	Date	Localities	Country	State	County	File or URL	Height	Units
61063	Acetabularia	Acetabularia	lenticular	ACR 05-12	04/21/2005	Port Laurus	Switzerland	Nide	Port Laurus	<A-WF2> 1818	78.6	cm
61062	Acetabularia	Acetabularia	rigidula	ACR 05-12	04/21/2005	South of Alp	Switzerland	Nide	Port Laurus	<A-WF2> 1819	81.6	cm
61061	Acetabularia	Acetabularia	lenticular	ACR 05-12	04/21/2005	Port Laurus	Switzerland	Nide	Port Laurus	<A-WF2> 1820	78.6	cm
61060	Acetabularia	Chondria	lenticular	ACR 05-12	04/21/2005	South of Alp	Switzerland	Nide	Port Laurus	<A-WF2> 1821	81.6	cm
61059	Acetabularia	Chondria	lenticular	ACR 05-12	04/21/2005	South of Alp	Switzerland	Nide	Port Laurus	<A-WF2> 1822	81.6	cm
61058	Acetabularia	Chondria	lenticular	ACR 05-12	04/21/2005	South of Alp	Switzerland	Nide	Port Laurus	<A-WF2> 1823	81.6	cm
61057	Acetabularia	Chondria	lenticular	ACR 05-12	04/21/2005	South of Alp	Switzerland	Nide	Port Laurus	<A-WF2> 1824	81.6	cm
61056	Acetabularia	Chondria	lenticular	ACR 05-12	04/21/2005	South of Alp	Switzerland	Nide	Port Laurus	<A-WF2> 1825	81.6	cm
61055	Acetabularia	Chondria	lenticular	ACR 05-12	04/21/2005	South of Alp	Switzerland	Nide	Port Laurus	<A-WF2> 1826	81.6	cm
61054	Acetabularia	Chondria	lenticular	ACR 05-12	04/21/2005	South of Alp	Switzerland	Nide	Port Laurus	<A-WF2> 1827	81.6	cm
61053	Acetabularia	Chondria	lenticular	ACR 05-12	04/21/2005	South of Alp	Switzerland	Nide	Port Laurus	<A-WF2> 1828	81.6	cm
61052	Acetabularia	Chondria	lenticular	ACR 05-12	04/21/2005	South of Alp	Switzerland	Nide	Port Laurus	<A-WF2> 1829	81.6	cm
61051	Acetabularia	Chondria	lenticular	ACR 05-12	04/21/2005	South of Alp	Switzerland	Nide	Port Laurus	<A-WF2> 1830	81.6	cm
61050	Acetabularia	Chondria	lenticular	ACR 05-12	04/21/2005	South of Alp	Switzerland	Nide	Port Laurus	<A-WF2> 1831	81.6	cm
61049	Acetabularia	Chondria	lenticular	ACR 05-12	04/21/2005	South of Alp	Switzerland	Nide	Port Laurus	<A-WF2> 1832	81.6	cm
61048	Acetabularia	Chondria	lenticular	ACR 05-12	04/21/2005	South of Alp	Switzerland	Nide	Port Laurus	<A-WF2> 1833	81.6	cm
61047	Acetabularia	Chondria	lenticular	ACR 05-12	04/21/2005	South of Alp	Switzerland	Nide	Port Laurus	<A-WF2> 1834	81.6	cm
61046	Acetabularia	Chondria	lenticular	ACR 05-12	04/21/2005	South of Alp	Switzerland	Nide	Port Laurus	<A-WF2> 1835	81.6	cm
61045	Acetabularia	Chondria	lenticular	ACR 05-12	04/21/2005	South of Alp	Switzerland	Nide	Port Laurus	<A-WF2> 1836	81.6	cm
61044	Acetabularia	Chondria	lenticular	ACR 05-12	04/21/2005	South of Alp	Switzerland	Nide	Port Laurus	<A-WF2> 1837	81.6	cm
61043	Acetabularia	Chondria	lenticular	ACR 05-12	04/21/2005	South of Alp	Switzerland	Nide	Port Laurus	<A-WF2> 1838	81.6	cm
61042	Acetabularia	Chondria	lenticular	ACR 05-12	04/21/2005	South of Alp	Switzerland	Nide	Port Laurus	<A-WF2> 1839	81.6	cm
61041	Acetabularia	Chondria	lenticular	ACR 05-12	04/21/2005	South of Alp	Switzerland	Nide	Port Laurus	<A-WF2> 1840	81.6	cm
61040	Acetabularia	Chondria	lenticular	ACR 05-12	04/21/2005	South of Alp	Switzerland	Nide	Port Laurus	<A-WF2> 1841	81.6	cm
61039	Acetabularia	Chondria	lenticular	ACR 05-12	04/21/2005	South of Alp	Switzerland	Nide	Port Laurus	<A-WF2> 1842	81.6	cm
61038	Acetabularia	Chondria	lenticular	ACR 05-12	04/21/2005	South of Alp	Switzerland	Nide	Port Laurus	<A-WF2> 1843	81.6	cm
61037	Acetabularia	Chondria	lenticular	ACR 05-12	04/21/2005	South of Alp	Switzerland	Nide	Port Laurus	<A-WF2> 1844	81.6	cm
61036	Acetabularia	Chondria	lenticular	ACR 05-12	04/21/2005	South of Alp	Switzerland	Nide	Port Laurus	<A-WF2> 1845	81.6	cm
61035	Acetabularia	Chondria	lenticular	ACR 05-12	04/21/2005	South of Alp	Switzerland	Nide	Port Laurus	<A-WF2> 1846	81.6	cm
61034	Acetabularia	Chondria	lenticular	ACR 05-12	04/21/2005	South of Alp	Switzerland	Nide	Port Laurus	<A-WF2> 1847	81.6	cm
61033												



Scatter Gather Reconcile

Manual
Data
Entry

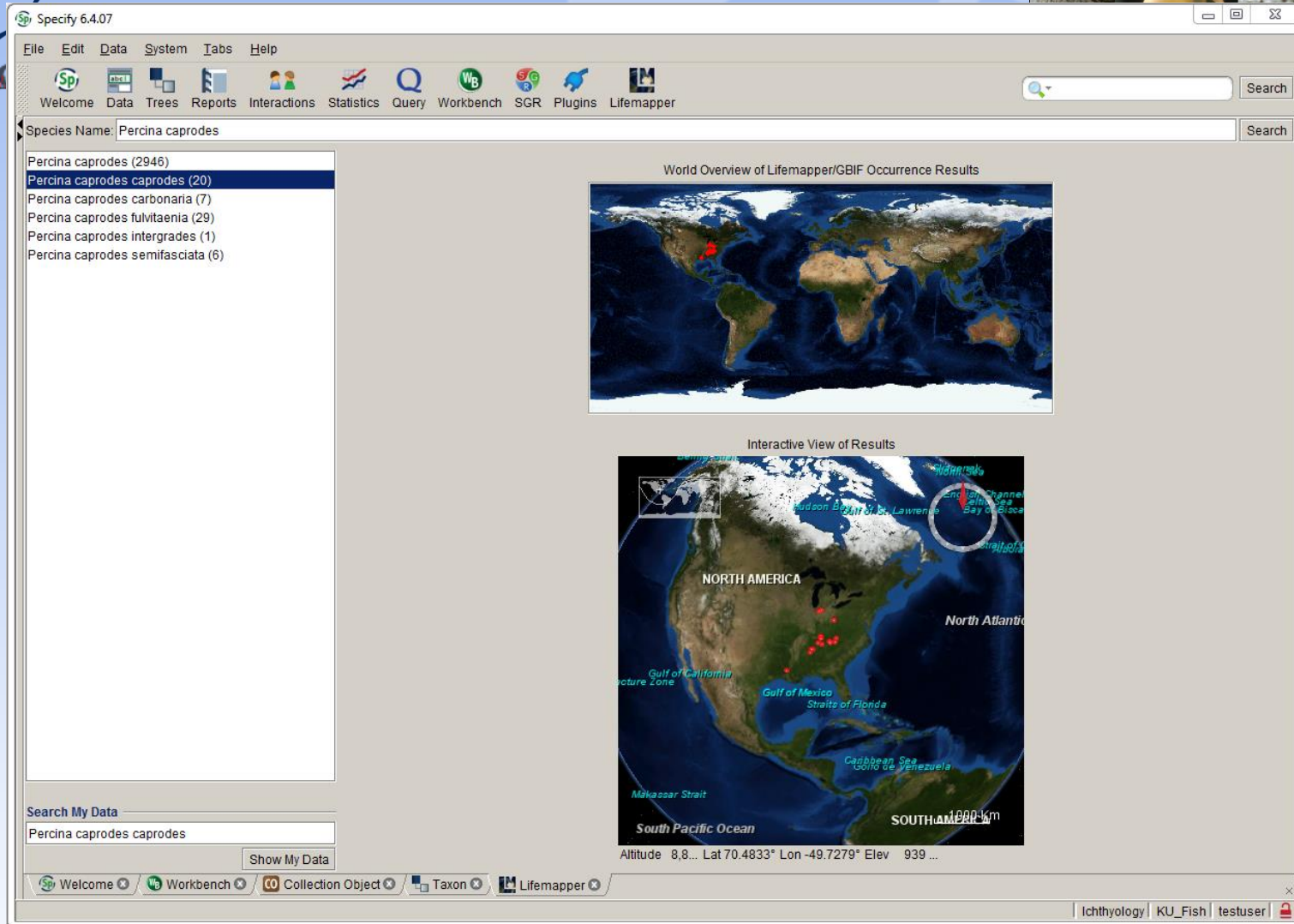
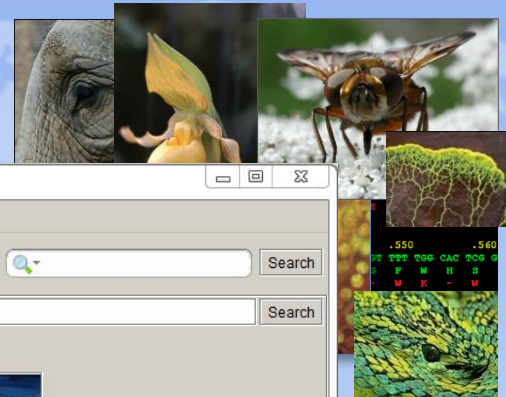
OCR



Import into Specify database



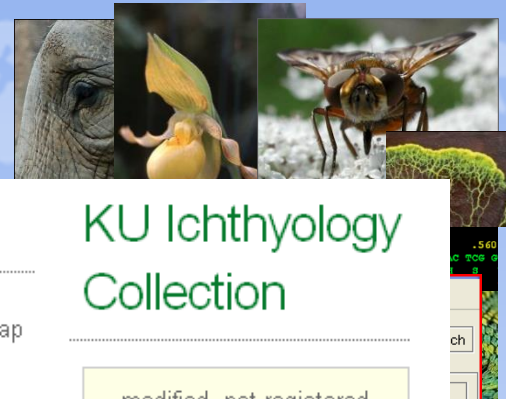
Lifemapper



<http://www.lifemapper.org>



GBIF IPT



Source Data

Please upload your data as tab delimited text files or define a SQL view to pull it from a database. You will need to map the main, core records to the **Darwin Core terms** in the next step, so if you can, please adjust your source data accordingly. For the main "core" records, please also make sure they have a unique identifier per row. You can define as many sources as you like and you will be able to upload additional information to complement a core darwin core record. For this to work, your additional sources need to refer to your core identifiers, i.e. have a foreign key. They don't need their own identifier though. Files currently cannot be larger than 100MB, but you can compress 1 or more files using zip. They will be unpacked on the server automatically.

File Data Sources

 **KUIDC2** [13,956kB, Nov 4, 2009 11:42:19 AM] ☒ contains headers

Update

Delete

Select a source file

SQL data sources are sql select statements to an external relational database (like views). The IPT can pull data from those databases when updating the internal cache.

SQL Data Sources

 No Database connected. Please adjust connection parameters to use SQL sources

KU Ichthyology Collection

modified, not registered

Resource Metadata

[Basic Metadata](#)

[Resource Originator](#)

[Geographic Coverage](#)

[Taxonomic Coverage](#)

[Temporal Coverage](#)

[General Keywords](#)

[IPRights](#)

[Research Project](#)

[Methods](#)

Resource Configuration

[Source Data](#)

[Mappings](#)

[Validation](#)

Recent Resources

[KU Ichthyology Collection](#)



Data cleanup tools



Specify 6.5.00

Welcome Data Trees Reports Interactions Statistics Query Workbench SGR Plugins Lifemapper Images Cleanup

Q - Latimeria

Geography

- Geo Add ISO Codes
- Geo Merge Duplicates

Agent

- Agnt Exact Match Merging
- Agnt Full Name Separation
- Agnt Fuzzy Match Merging

Locality

- Loc Exact Match By Locality Name
- Loc Exact Match By Lat/Lon
- Loc Fuzzy Match on Locality Name
- Loc Verify Lat/Lon for Geo

Trash

Agent Cleanup

Hase
Agent

Primary	Include	Middle Initial	Last Name	First Name	Title
<input type="checkbox"/>	<input type="checkbox"/>	J	Hase	Kristen	mr
<input type="checkbox"/>	<input type="checkbox"/>		Kristen Hase		

☐ Primary
☐ Include

Middle Initial: J
Last Name: Hase
First Name: Kristen
Title: mr

1 of 2

Skip Quit OK

Ichthyology | KUFishtissue | testuser



Image browsing and import



Specify 6.5.00

Welcome Data Trees Reports Interactions Statistics Query Workbench SGR Plugins Lifemapper Images Cleanup

Q Latimeria

Actions

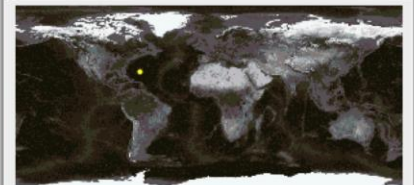
- Show All Images
- Import Images
- Import Image Index

1 of 111

Trash

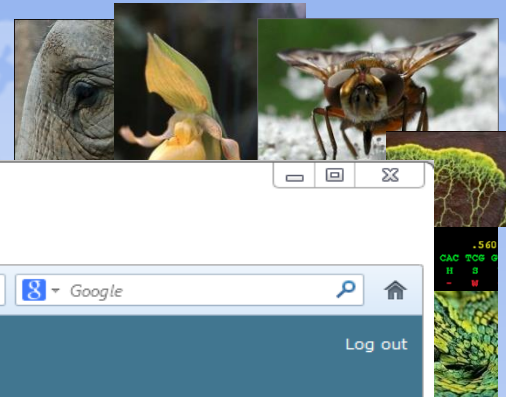
Images

Original Filename: 158701_dorsal.jpg
Cat #: 3588
Date: 2000-12-06
Field Number: DE 00-11:021
Locality Name: Slope water, mid Atlanti...
Latitude1: 39.9178009033
Longitude1: -67.3992004395
Geography: USA
Taxon: Dibranchus tremendus





Move to the web



Express Search | Specify WebApp - Mozilla Firefox

File Edit View History Bookmarks Tools Help

Express Search | Specify WebApp

dhwd99p1.nhm.ku.edu/specify/express_search/?q="Acanthurus+nigricauda"

Specify WebApp [Log out](#)

"Acanthurus nigricauda"

Primary Search

▶ [Taxon - 1](#)

Secondary Search

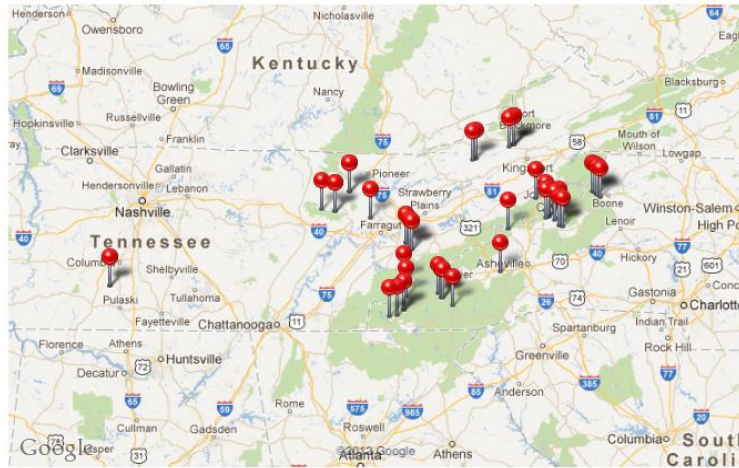
▶ [Taxon ↔ Geography - 3](#)

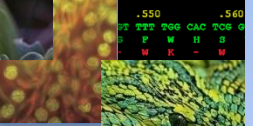
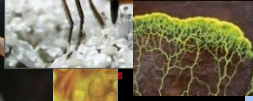
▼ [Collection Object ↔ Taxon - 5](#)

Cat #	Cat Date	Full Name
32508	2003-06-13	Acanthurus nigricauda
5627	2003-06-10	Acanthurus nigricauda
6811	2005-06-20	Acanthurus nigricauda
5628	2003-06-10	Acanthurus nigricauda
7355	2006-01-13	Acanthurus nigricauda

▶ [Collection Object ↔ Taxon \(determined\) - 5](#)

▶ [AccessionToCo - 5](#)





Thank you

