

PCC

The Pteridological Collections
Consortium





Louis-M. Landry



What are pter

Robbin Moran



Wes Testo



Robbin Moran



Carl Rothfels



John Game



Robbin Moran



Barry Rice



Steve Matson



Robbin Moran

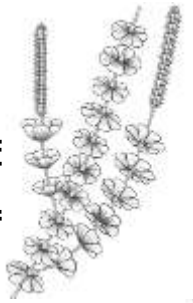


Carl Rothfels



The Google

wikipedia



Diane Erwin

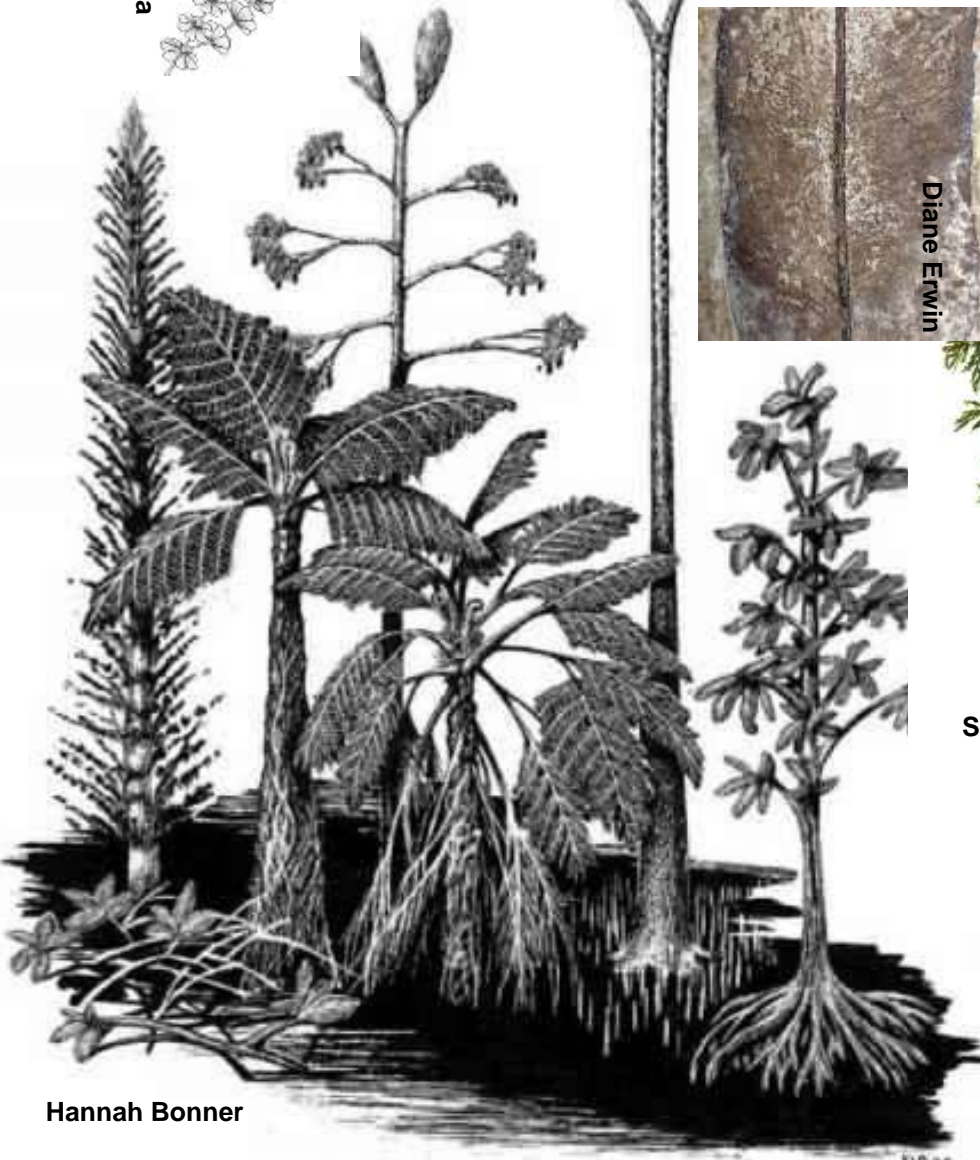


Sergio Perez



NASAPK1914
No 8011
PA-312

Diane Erwin

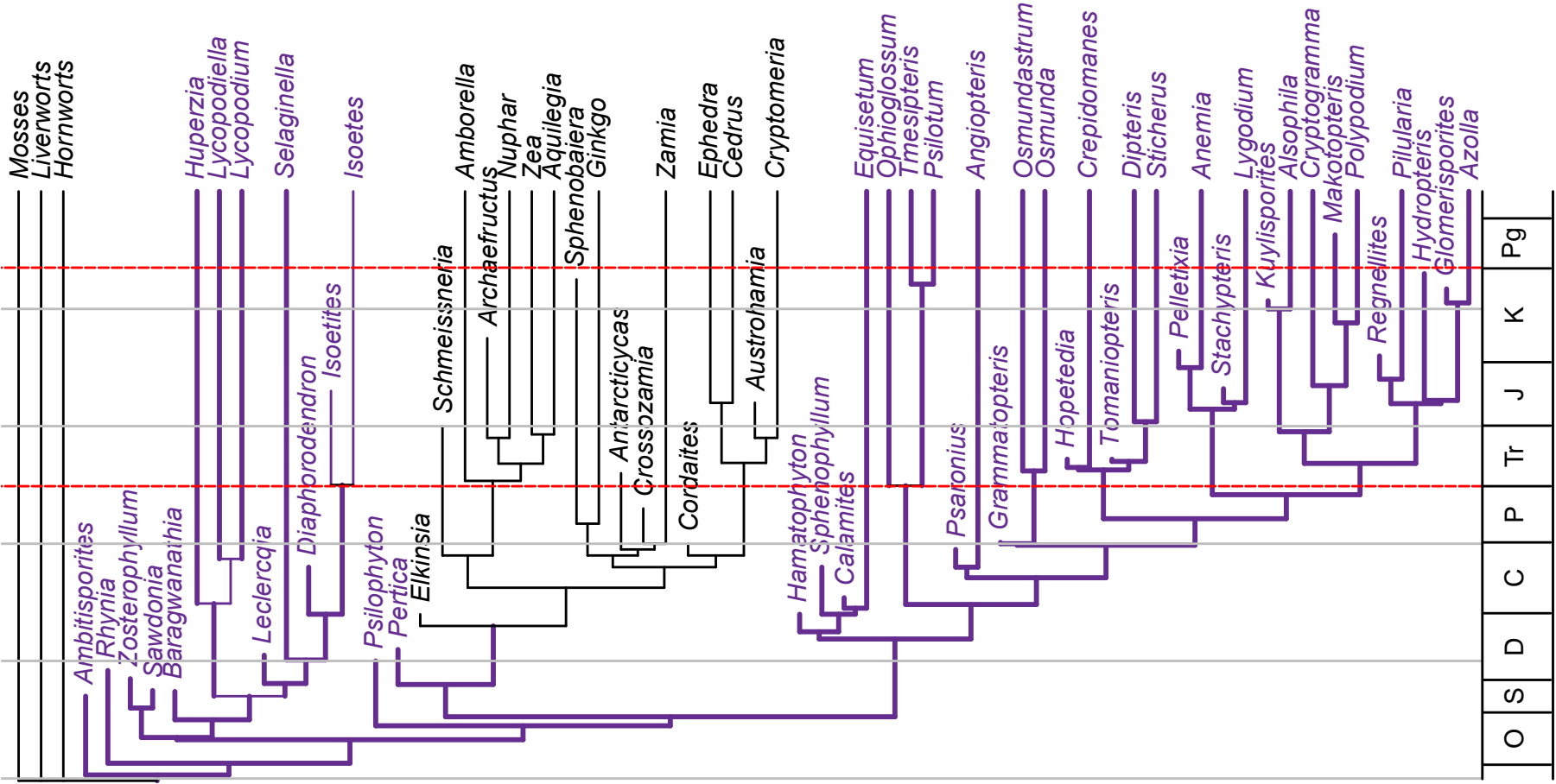


Hannah Bonner



Diane Erwin

Pteridophytes



Project Goals

1. Establish a Pteridological Collections Consortium (PCC)
 - Integrate the communities

Project Goals

1. Establish a Pteridological Collections Consortium (PCC)
 - Integrate the communities
2. Digitize 1,766,671 pteridophyte specimens
 - 100,193 fossil specimen
 - 1,666,478 herbarium specimens

Project Goals

1. Establish a Pteridological Collections Consortium (PCC)
 - Integrate the communities
2. Digitize 1,766,671 pteridophyte specimens
 - 100,193 fossil specimen
 - 1,666,478 herbarium specimens
3. Provide a digital portal and community focal point
 - Dissemination, visualization, and analysis of pteridophyte specimen images and data, fossil and extant

36 PCC Members (and counting)

Nine core institutions, 20 sub-awards, seven contributors

University of California, Berkeley

Oregon State University
University of Washington
Bishop Museum
*University of California, Davis
*University of Hawai'i
*National Museum of Natural History

New York Botanical Garden

Rutgers University
University of Texas, Austin

University of Michigan

University of Minnesota
Miami University, Ohio
*Ohio University

Field Museum

University of Wisconsin
Michigan State University

Missouri Botanical Garden

Yale University

University of Alaska
Botanical Research Institute of Texas
University of Oklahoma
*University of Connecticut

University of Vermont

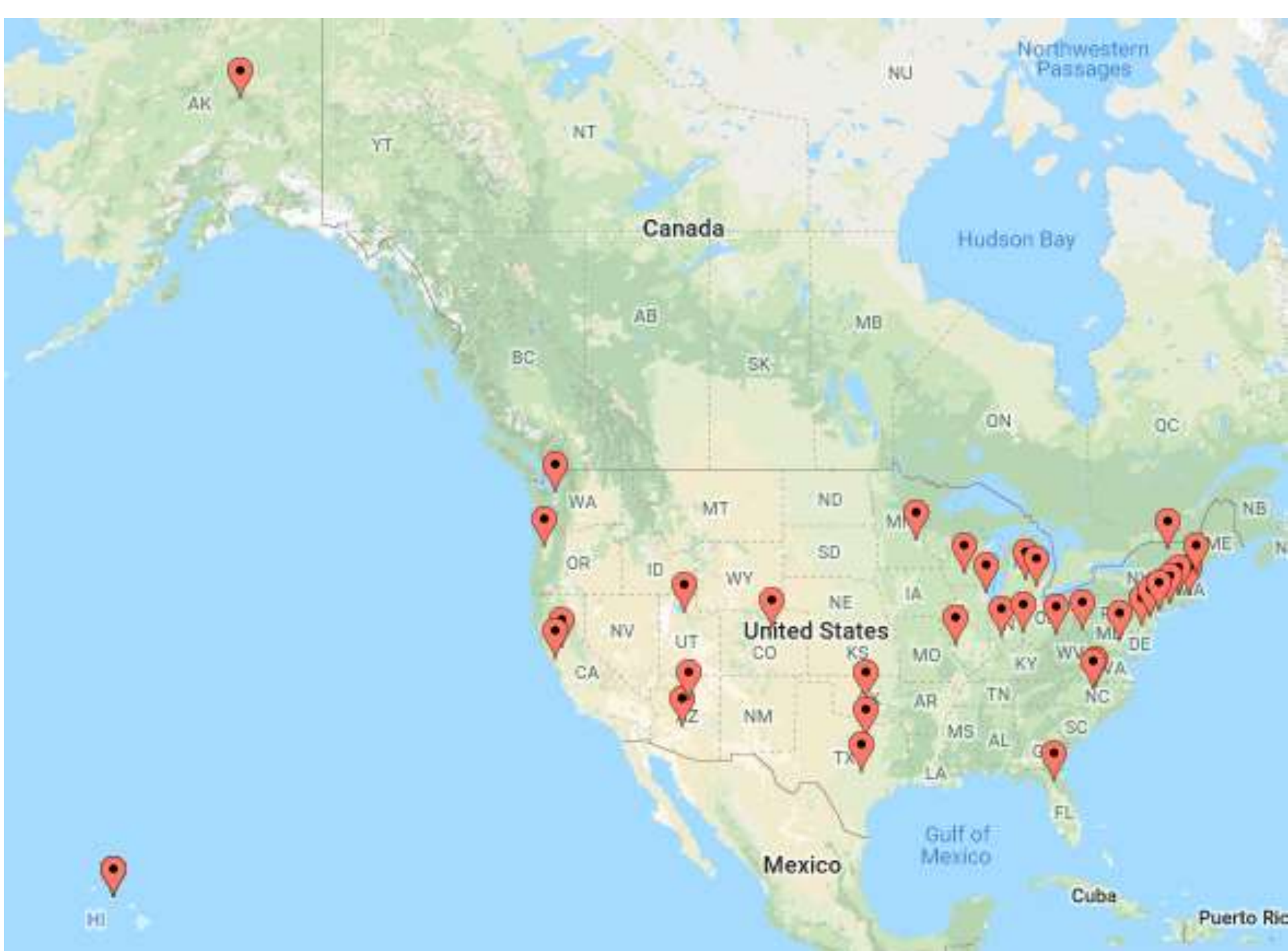
University of New Hampshire
Drexel University
*Indiana University

University of Florida

Museum of Northern Arizona
Denver Museum of Natural History
Brown University

University of North Carolina

Duke University
Natural History Museum of Utah
Arizona State University
*University of West Virginia



Digital Products

- Symbiota portal:
 - pteridoPortal.org (coming soon)

Digital Products

- Symbiota portal:
 - pteridoPortal.org (coming soon)
- Project site:
 - pteridophytes.berkeley.edu (coming soon)

Digital Products

- Symbiota portal:
 - pteridoPortal.org (coming soon)
- Project site:
 - pteridophytes.berkeley.edu (coming soon)
- **Development of Paleo Symbiota Module**
 - Add DwC GeologicalContext metadata
 - Allow for simultaneous search of extant and fossil collections

Digital Products

- Symbiota portal:
 - pteridoPortal.org (coming soon)
- Project site:
 - pteridophytes.berkeley.edu (coming soon)
- Development of Paleo Symbiota Module
 - Add DwC GeologicalContext metadata
 - Allow for simultaneous search of extant and fossil collections
- Social media
 - Twitter; Facebook



Tweets
1

Following
10

Followers
2

Follow

Pteridophyte Collections Consortium TCN

@pterido_TCN

We are the Pteridophyte Collections Consortium TCN. We are digitizing extant and fossil pteridophyte specimens from 36 herbaria and museums nationwide.

📅 Joined September 2018

New to Twitter?

Sign up now to get your own personalized timeline!

Sign up

Tweets Tweets & replies



Pteridophyte Collections Consortium TCN @pterido_TCN · 23h
For all you pteridophiles the Pteridophyte Collections Consortium TCN is now in the Twittersphere! [#ourfirstTweet](#) [#allfernsdeadandalive](#)



Outreach and Education

- Online interactive program geared toward middle school learners
- Online lesson plan and YouTube videos:
The rise and evolution of spore plants
- Collaboration with GoFlag to incorporate PCC data into the Plant Phylogeny Voyager

Enabling Science

- Pteridophytes have an intimate connection to abiotic conditions; responses to global change

Enabling Science

- Pteridophytes have an intimate connection to abiotic conditions; responses to global change
- Similarly, what factors influence the diversification and geographic distribution of lineages through time?

Enabling Science

- Pteridophytes have an intimate connection to abiotic conditions; responses to global change
- Similarly, what factors influence the diversification and geographic distribution of lineages through time?
- How have major macro-ecological features evolved over geological time?

Enabling Science

- Pteridophytes have an intimate connection to abiotic conditions; responses to global change
- Similarly, what factors influence the diversification and geographic distribution of lineages through time?
- How have major macro-ecological features evolved over geological time?
- What are the patterns of whole-genome duplication over geological time, and what are the evolutionary consequences of those duplications?

Enabling Science

- Pteridophytes have an intimate connection to abiotic conditions; responses to global change
- Similarly, what factors influence the diversification and geographic distribution of lineages through time?
- How have major macro-ecological features evolved over geological time?
- What are the patterns of whole-genome duplication over geological time, and what are the evolutionary consequences of those duplications?
- How can fossils inform our reconstruction of the tree of life?

**Contact us:
pteridophytes@berkeley.edu**



Michael Sundue
www.fernsoftheworld.com

Thank you NSF