



Developing a Centralized Digital Archive of Vouchered Animal Communication Signals

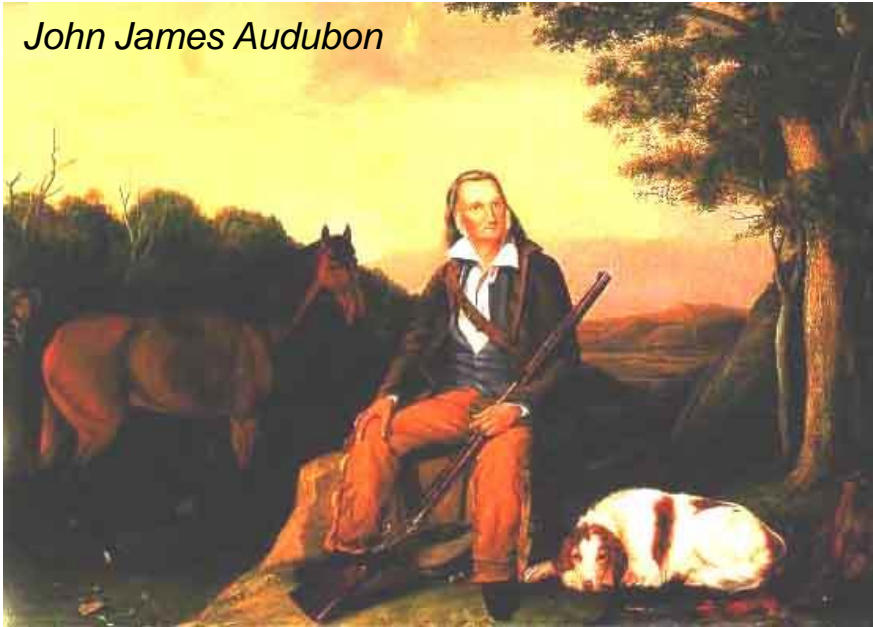
Michael Webster

Dept. of Neurobiology & Behavior, Cornell

The **Cornell** Lab  of Ornithology
Macauley Library

Biological Collections

John James Audubon



The Extended Specimen



Magnificent Riflebird
(*Ptiloris magnificus*)

Specimens at the [Netherlands
Centre for Biodiversity Naturalis](#)

The Extended Specimen



Magnificent Riflebird
(*Ptiloris magnificus*)

Specimens at the [Netherlands Centre for Biodiversity Naturalis](#)



Videos collected by Ben Clock & Emma Greig
(soon to be archived at Macaulay Library!)

The Macaulay video collection now
includes over 50,000 media “specimens”

The Extended Specimen



Musician Wren (*Cyphorhinus arada*)
ML Audio #29734
Recorded by Ted Parker, August 1982
Madre de Dios, Peru

The Macaulay audio collection now contains nearly 200,000 recordings




Photo: Conservation International, Haroldo Castro

HOME ARCHIVE INSIDE ML ORDER MEDIA TOOLS HELP
BROWSE SEARCH ADV. SEARCH SPECIMEN EDIT ACCESSION COPY CREATE AUDIO/VIDEO SEARCH: Redhead go
☐ AUDIO ☒ VIDEO ?

ML Video 55295 *Cicinnurus magnificus* . Magnificent Bird-of-paradise

Indonesia . Papua
Scholes III, Edwin
August 9 2009 at 739

☐ Call
☒ Song



00:05 01:04

[Player settings](#)
[Terms of Use](#)

Species

1. *Cicinnurus magnificus* [B](#) [S](#) [I](#)
Magnificent Bird-of-paradise

Age/Sex: 1 Female Adult
1 Male Adult

Certainty of Species: 100%

How Identified: Sight and Sound


Stimulus for Sound: Natural/None

Behavior

- song :43 - :49 [B](#)
- mechanical sound
- perform courtship display :14 - :33 [B](#)

Subject Notes

Locations



Map Satellite Hybrid Terrain

100 mi
200 km

Map settings

A. Country: Indonesia
State: Papua

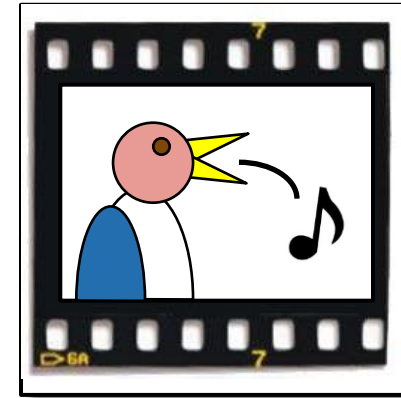
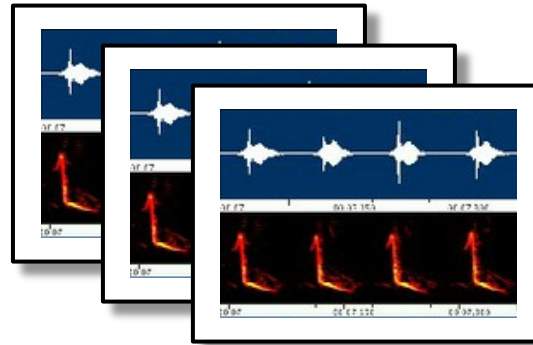
Specimen Access

1. A large amount of undigitized material
2. Links to vouchers?

Goal 1: Digitize Media

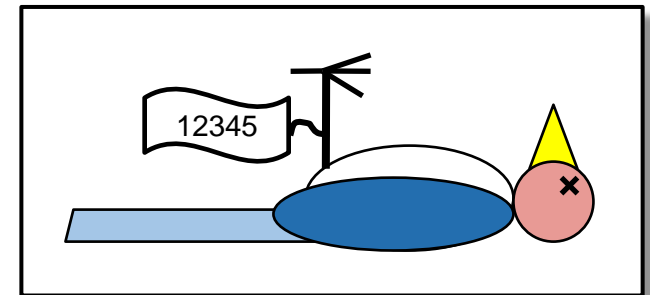
Primary Partners

1. Macaulay Library, Cornell
2. Cornell Uni Museum of Vertebrates
3. University of Kansas Biodiversity Institute
4. LSU Museum Natural Science
5. Texas Natural Science Center, Univ. Texas
6. California Academy of Sciences



Secondary Partners

1. AMNH, Ornithology
2. Yale Peabody Museum
3. Smithsonian Institution
4. Zoologisk Museum, Denmark
5. Museo Paraense Emilio Goeldi, Brazil



Goal 1: Digitize Media

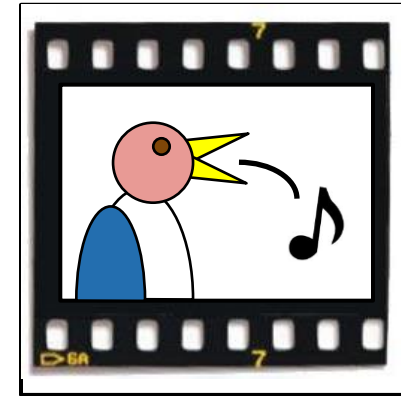
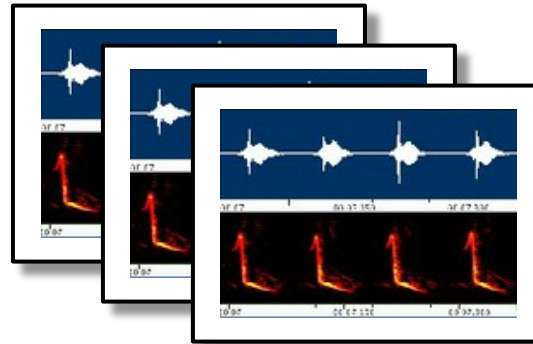
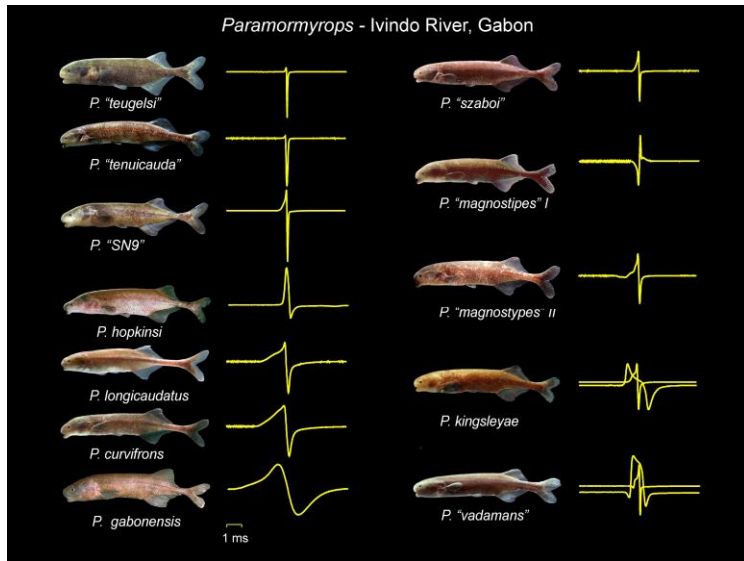
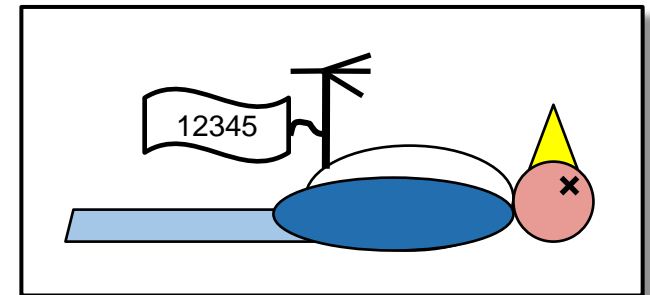
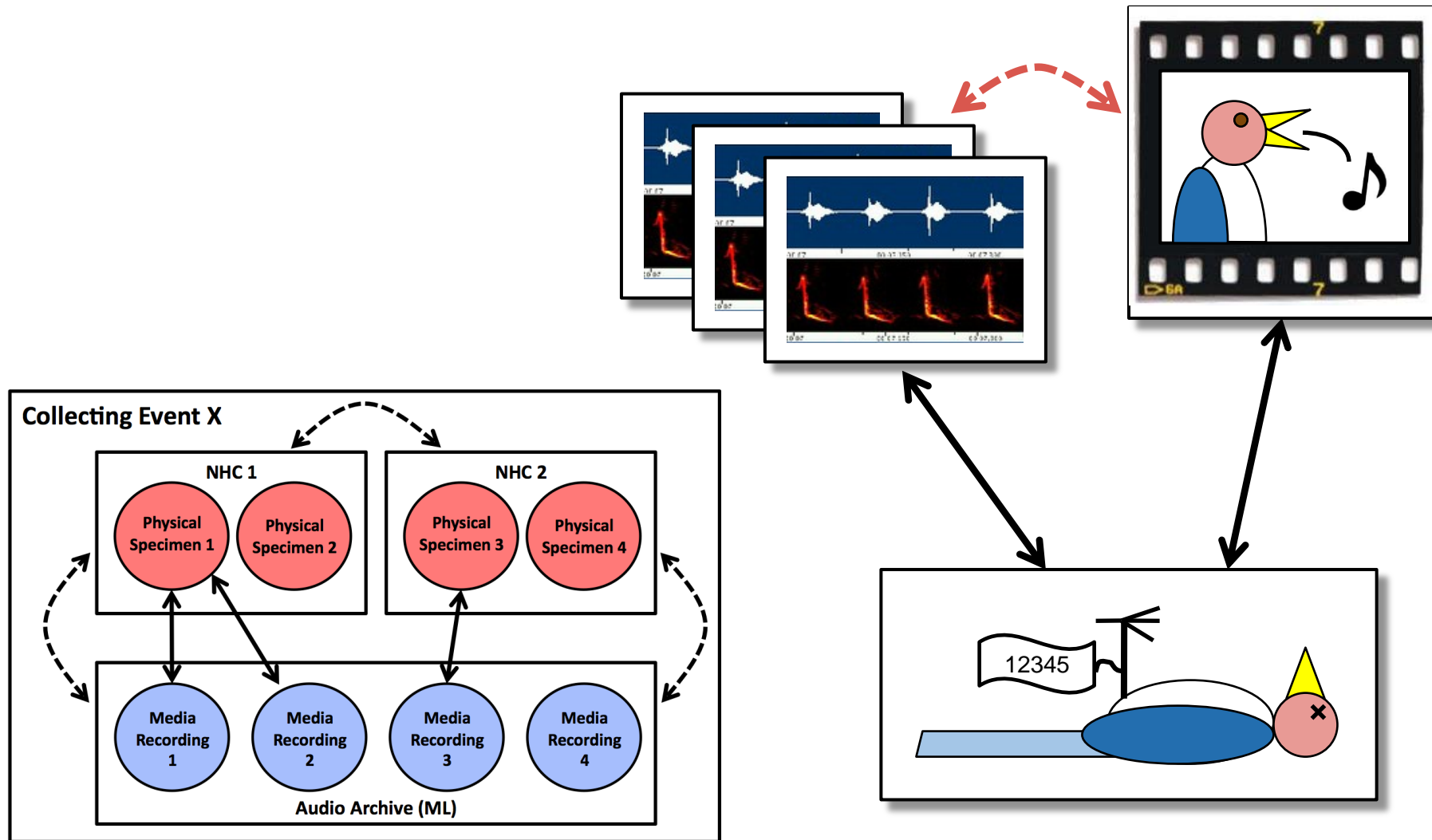


Table: Specimens Included

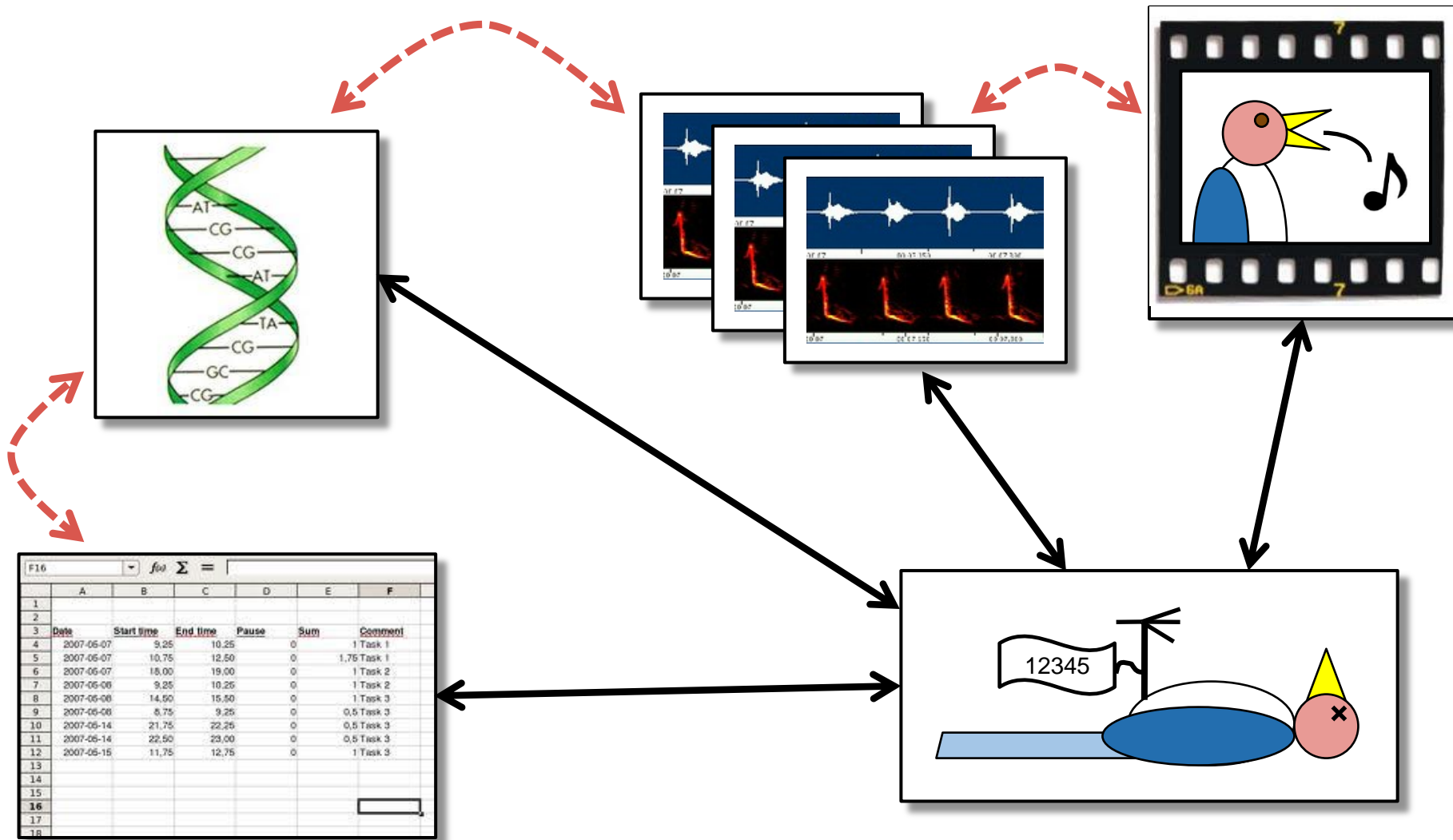
Taxon	Vouchers	Pop'n Vouchers
Birds	5,114	>55,500
Anurans	5,300	10's of thousands
Fish	6,938	unknown
Insects	8,968	5,704
Other	28	unknown
Total	26,348	>70,000



Goal 2: Connections & Access



Goal 2: Connections & Access



The Extended Specimen



Magnificent Riflebird
(*Ptiloris magnificus*)

Specimens at the [Netherlands Centre for Biodiversity Naturalis](#)



ML Video #455444, Magnificent Riflebird, Papua, Indonesia, 2009

The Macaulay video collection now includes over 50,000 media “specimens”