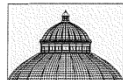


The Macrofungi Collections Consortium



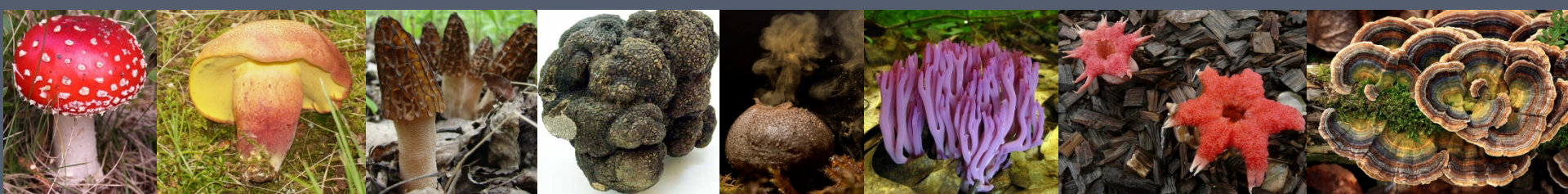
Barbara M. Thiers



THE NEW YORK BOTANICAL GARDEN

What are macrofungi?

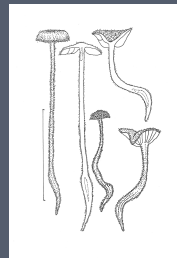
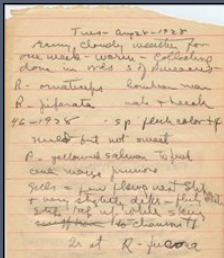
- Fungi with a macroscopic sporocarp (i.e. conspicuous spore-bearing structures)
- Polyphyletic assemblage
- Examples include mushrooms, boletes, morels, truffles, puffballs, club fungi, stinkhorns, and bracket fungi



Digitize specimen data, field notes and photographs

■ Data to be digitized (estimated):

- 700,000 specimen records
- 70,000 specimen images (10% of specimen total)
- 144,260 photographs of living fungi (represented in specimen collections)
- 26,092 field book pages
- 355,220 field notes, spore prints and other ancillary materials



Education and Outreach

- High school teacher training
- Undergraduate Training
- Training in scientific documentation for citizens
- Amateur mycology community
 - Virtual Citizen Science Community
 - Workforce training

Teacher Training



Raise Awareness of Macrofungi in High School and College Students

- College students will:
 - Gain employment (60,000 hours of student labor required for this project),
 - Gain knowledge of fungi through field trips, lectures and demonstrations by P.I.s
 - Develop interpretive content related to fungi using social media
 - Will have opportunity to attend macrofungi-oriented meetings (professional and citizen mycology)
- Project will fund two workshops for high school biology teachers
 - First workshop to be held at North Carolina State University
 - Second workshop to be held in conjunction with Mycological Society of America annual meeting in 2014



Undergraduate Training

Undergraduate training activities:

- Field trips
- Documentation techniques
- Blogging, other social media



Workforce Trainees



Transcription course training session for Osborne Association trainees.

Osborne provides training to help formerly incarcerated citizens re-join the workforce

Enlist volunteers to improve data quality and completeness

Data input

University of Michigan Herbarium (MICH)
[Home](#) >> [Collection Management](#) >> [Editor](#) | 6 of 14405 | << >> >>>

Occurrence Data | Determination History | Images | Admin

Collector Info

Catalog Number: 135325 | Other Numbers: | Collector: K. A. Harrison | Number: 6673 | Date: 1967-07-21 | Duples? ☐ Auto search

Associated Collectors:

Latest Identification

Scientific Name: Stereum murrayi | Author: (Berk. & M.A. Curtis) Burt
ID Qualifier: | Family: Stereaceae
Identified By: | Date Identified:

Locality

Country: | State/Province: | County: | Municipality: |
Locality:
☐ Locality Security

Latitude: | Longitude: | Uncertainty: | Datum: | Elevation in Meters: | Verbatim Elevation: | Tools

Misc

Habitat:
Substrate:
Associated Taxa:
Description:
Notes:
Life Stage: | Sex: | Individual Count: | Sampling Protocol: | Preparations: |
Phenology: | Establishment Means: ☐ Cultivated

Curation

Type Status: | Disposition: | Occurrence ID: | Field Number: |
Owner Code: | Basis of Record: Preserved Specimen | Language: | Label Project: | Dupe Count:
Processing Status: Stage 1

Label Processing

HERBARIUM OF THE UNIVERSITY OF MICHIGAN
STEREUM MURRAII (B. & C.) Burt.
On very rotten log.
Itaska State Park, Itaska Co., Minn.
21 Jul 1967.
COLLECTED BY K. A. Harrison 6673
DETERMINED BY A. H. Smith

OCR Image Options
☐ OCR whole image
☐ OCR w/ analysis

Image 1 of 1

Enlist volunteers to improve data quality and completeness

Georeferencing

Illinois Natural History Survey (University of Illinois) (ILLS:ILLS)

[Home](#) >> [Collection Management](#) >> [Editor](#)

Occurrence Data

Determination History

Images

Admin

Collector Info

Catalog Number ?	Other Numbers ?	Collector ?	Number ?	Date ?
52956		C.H. Peck	821	1876-08-01

Associated Collectors ?

Latest Identification

Scientific Name: ?	Author: ?
Sphaeria abdita	Berk. & M.A. Curtis
ID Qualifier: ?	Family: ? Xylariaceae
Identified By: ? M.C. Cooke & C.H. Peck	Date Identified: ?

Locality

Country	State/Province	County	Municipality
USA	New York	Albany	

Locality:
Albany.

☐ Locality Security

Latitude	Longitude	Uncertainty ?	Datum ?	Elevation in Meters	Verbatim Elevation

Verbatim Coordinates

Georeferenced By

footprint (polygon)

Georeference Protocol ? Georeference Sources ? Georef Verification Status ? Georeference Remarks

Workbench 1 possible location found

Georeference Options Clear Polygon Draw polygon Place marker Measure

Locality String: Albany

Country: UNITED STATES OF AMERICA

State: New York

County: Albany

☒ Latitude: 42.681027 ☒ Longitude: -73.805765 ☒ Uncertainty: 8378 m ☒ error polygon

42.681027 -73.805765 8378

42.6879940231, -73.7944039011, 42.6878250231, -73.7932649041, 42.6877690231, -73.7928689041, 42.687930231, -73.7927119041, 42.6880920231, -73.7927119041, 42.687930231, -73.7928689041, 42.6878250231, -73.7932649041, 42.6877690231, 42.6879940231, 42.681027, -73.805765

Notes from Nature



A Zooniverse project

SIGN UP | SIGN IN

Notes from **Nature**.

COLLECTIONS

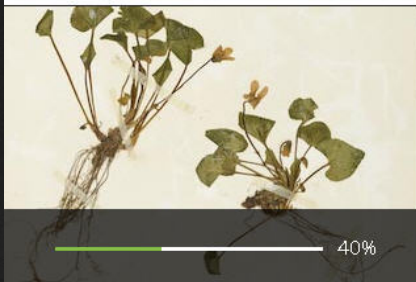
ABOUT

DISCUSS

BLOG

4 collections available

Browse through them and select your favorite.



40%

Herbarium

SERNEC



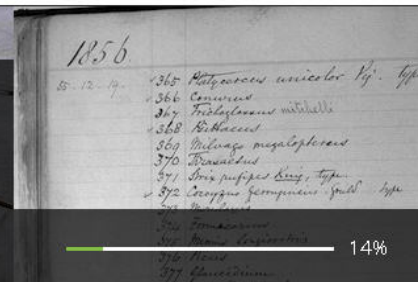
21%

Calbug digitizes collections of pinned insect specimens drawn from eight of California's major institutions, showcasing the stunning diversity of insect life in our world.

[Check out this collection](#)

Calbug

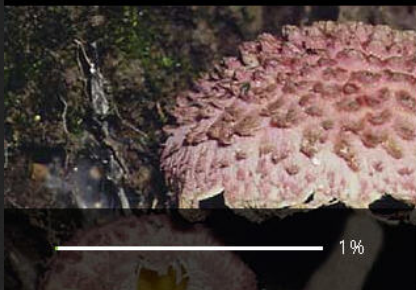
Essig Museum Collections



14%

Ornithological

Natural History Museum



1%

Macrofungi

Partnership with the Citizen Mycology community

Citizen mycologists conduct public outreach about fungi

- forays, fungus fairs, lectures, poison control
- document local mycota through publications, websites and herbaria

Role for citizen mycologists in the MaCC Project:

- Serve on project advisory board
- Edit and augment specimen records
- Use Portal functions to document findings
- Create content for crowdsourcing application designed to attract new members to their organizations.



North American Mycological Association

To promote, pursue and advance the science of mycology