

A Passion for Biology

Henry L. Bart, Jr.

Professor of Ecology and Evolutionary Biology
Director, Tulane University Biodiversity Research
Institute

hbartjr@tulane.edu



(Pursuing) A Passion for (Ecology and Evolutionary) Biology

Henry L. Bart, Jr.

Professor of Ecology and Evolutionary Biology
Director, Tulane University Biodiversity Research
Institute

hbartjr@tulane.edu



Outline of Talk

- My journey to Ecology and Evolutionary Biology (EEB);
- My ascent in EEB and the fruits I now enjoy;
- Difficulties attracting minorities to careers in EEB;
- Why you should consider advanced study and careers in EEB;
- Opportunity for Doctoral Study in EEB for you.

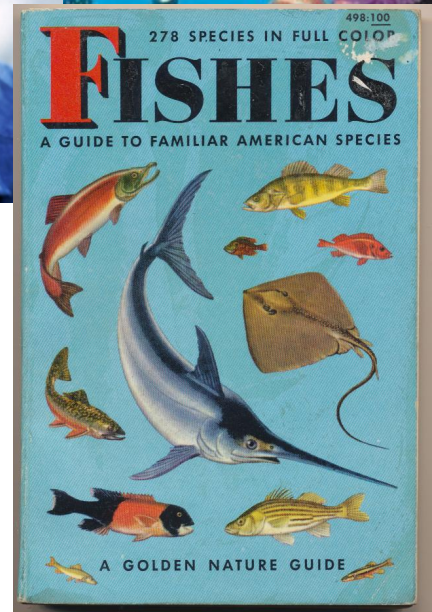
My Journey to EEB

- Born to a large, New Orleans “Creole” family (Creoles of Color).
- Raised as Catholic, attended Catholic schools.
- Parents placed no limitations or restrictions on the career paths we could follow.

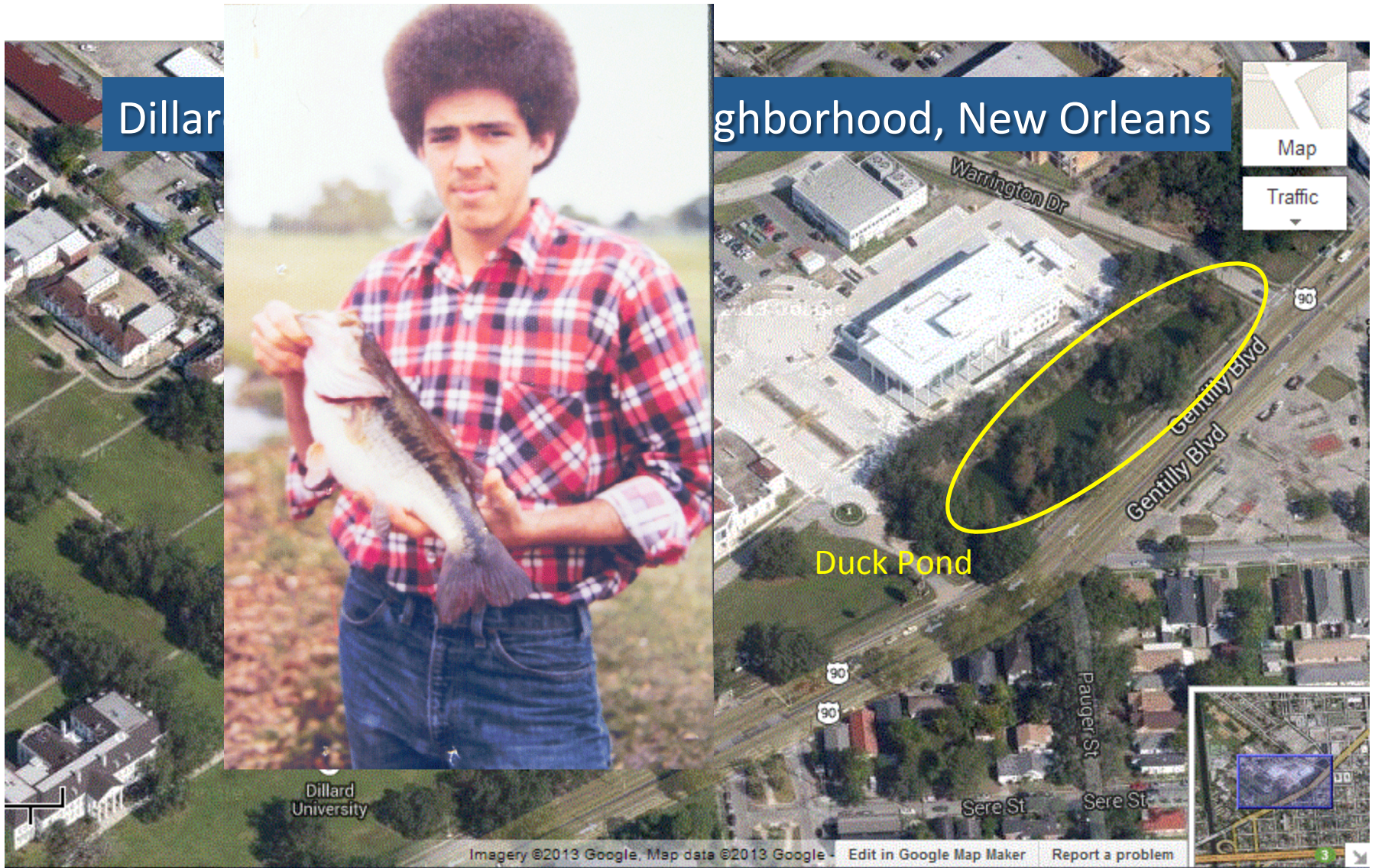


My passion for EEB (fishes)

- As boy growing up in New Orleans, I enjoyed fishing in the estuaries and bayous around the city.
- Soon developed into an all consuming passion for fish.
- Favorite childhood movie:
Incredible Mr. Limpet.
- Childhood hero: Jacques Cousteau
- Favorite childhood book: *Golden Nature Guide on Fishes* (my bible).

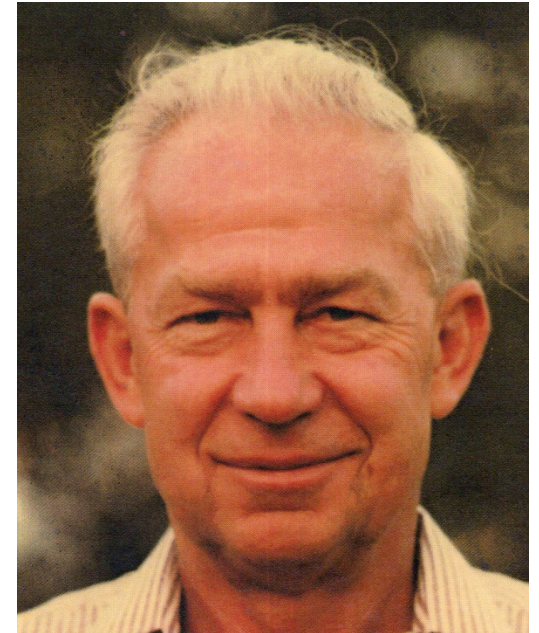


My passion for EEB (fishes)



My Ascent in EEB

- First learned about field of Ichthyology in 1977 while working with my predecessor, Royal D. Suttkus, as a volunteer curatorial assistant at the Tulane Museum of Natural History.
- Succeeded Suttkus as Curator of Fishes at TUMNH 15 years later.
- I modernized the Suttkus fish collection and opened it to the world.





Tulane University Biodiversity Research Institute

- Center for research and information on biodiversity distribution and for assessing threats to aquatic and terrestrial communities regionally (southeastern U.S.) and globally.
- Houses the Royal D. Suttkus Fish Collection, largest collection of post-larval fishes in the world (over 7 million specimens); National Center of Ichthyology Research Resource.
- Hosts Fishnet2 network of databases from 72 institutions; provides access to records for over 42 million fish specimens world wide...





Software & services for georeferencing of natural history collections data

automated georeferencing
verification & correction

multi-lingual

interoperability

soap & rest api

training

uncertainty determination

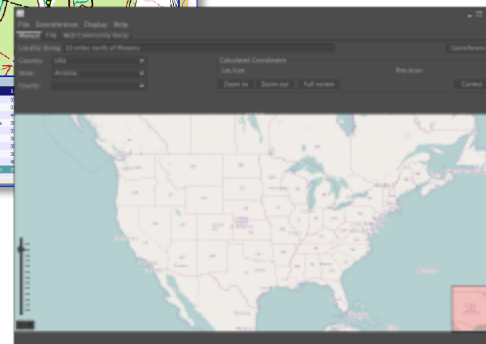
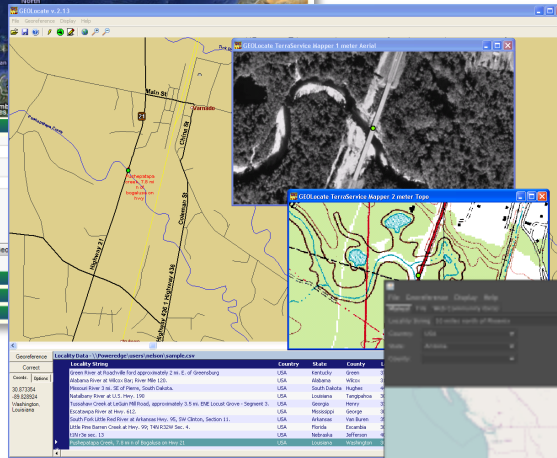
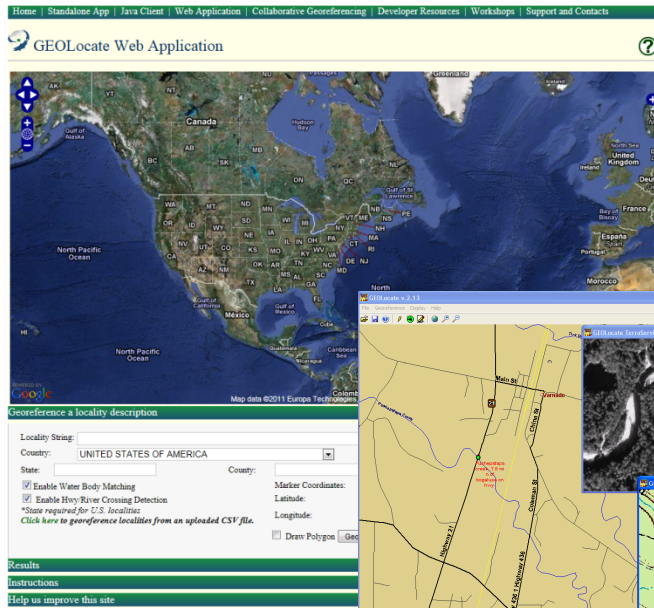
collaborative georeferencing

kml export

batch processing

geographic visualization

google, bing, openstreet, wms



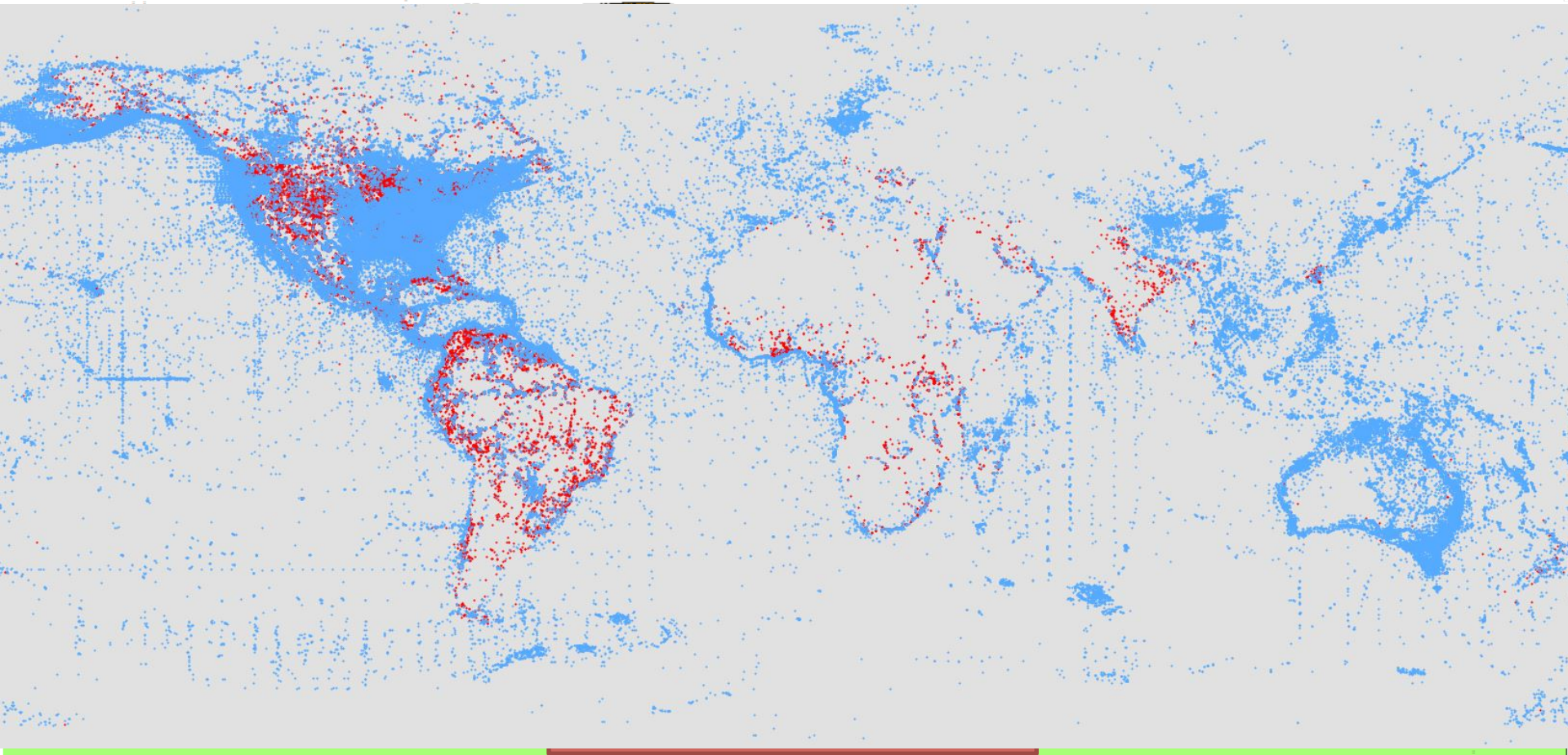
Fishnet2 Collaborative Georeferencing



12 U.S. Institutions collaborating to georeference 290,000 fish occurrence records globally.



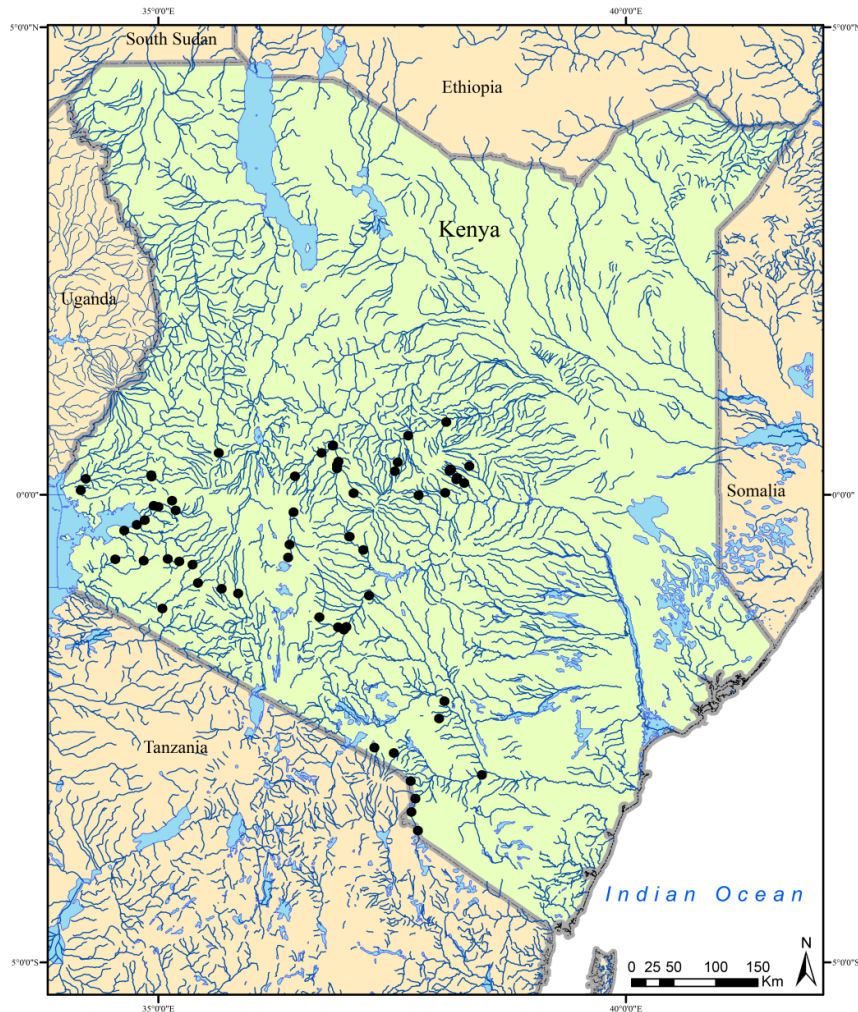
Assignments and Results



My Reputation in EEB

- After 22 years at Tulane, I'm at the top of my field.
- Recognized internationally for contributions to the field of Ichthyology, leadership in natural history collections and biodiversity informatics communities.
- I travel (a lot) professionally (28 countries in last 10 years: Amsterdam, Australia, Austria, Belgium, **Brazil**, Burundi, **China**, Canada, Croatia, Estonia, France, Germany, **Guinea**, Hungary, Italy, **Japan**, **Kenya**, Lithuania, **Mexico**, Netherlands, Peru, Romania, Serbia, Slovakia, South Africa, Spain, Thailand, United Kingdom – **collaborating with colleagues in countries in bold**).

Découverte de la Biodiversité des poissons au Kenya



UNIVERSITY OF NAIROBI



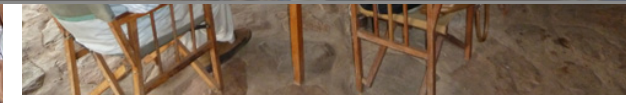
Field Sampling



Laboratory Work



Activités Sociales et Culturelles



Difficulties Attracting Minorities to EEB


- People who are passionate about EEB value biological diversity in all of its forms, including human diversity.
- We want people of all races to be as passionate about EEB as we are.
- Minorities are severely underrepresented in EEB compared to other areas of biology.
- We want to change this.
- Organizers of this workshop are planning a number of activities to attract minorities and non-minorities to organismal biology.
- Please stay tuned...

Why you should consider advanced study and careers in EEB

- You should consider this ***only*** if you are passionate about it...
- **Biological professional schools are expensive** (\$210K-\$280K median for medical school; \$130K-\$195K for dental school; \$65K-\$125K for pharmacy school; \$20K-\$30K annually for nursing school).
- Most **graduate schools** in U.S. ***waive tuition*** and ***pay stipends*** to students with assistantships and fellowships.

EEB Doctoral Study Opportunity for You

- 4-year doctoral fellowship in EEB at Tulane University.
- Stipend of \$30,000 per year.
- Yearly allowance for professional travel and/or research support.
- Excellent research opportunities in Gulf South region of U.S. and tropics.
- See me if you are interested in applying.




ECOLOGY & EVOLUTIONARY BIOLOGY

The Ecology and Evolutionary Biology department at Tulane University is seeking outstanding candidates for three Board of Regents (BoR) Graduate Research Fellowships. Each fellowship includes a yearly stipend of \$30,000, and a yearly allowance for professional travel and/or research support.

We strongly encourage applications from underrepresented minority students. Interested candidates should contact the faculty member whose research aligns with that of the candidate (faculty websites: <http://tulane.edu/sse/eebio/faculty-and-staff/faculty/>).


The Tulane EEB department emphasizes three main areas of academic inquiry: tropical biology, wetlands ecology, and global change biology. We study organisms, populations, communities, ecosystems and global systems as we focus our efforts on conservation biology, ecosystem ecology, environmental biology, evolutionary biology, global change, tropical ecology and systematics. Our research is centered geographically in the subtropics - especially Louisiana - and the tropics, although we explore life in other regions of the Earth as well. Graduate students are important contributors to our effort to create and disseminate knowledge about organisms and their environments.

PhD Programs

 **Tulane University**

APPLICATION DEADLINE
January 15

WEBSITE
tulane.edu/sse/eebio



THANKS FOR YOUR ATTENTION!

hbartjr@tulane.edu

