

A photograph of a server room aisle. Rows of server racks line both sides of a white-tiled floor. The racks have light-colored doors with blue vertical panels. The ceiling features exposed ductwork and rectangular light fixtures. The perspective shows the aisle receding into the distance.



Purdue Entomological Research Collection (PERC)



Outline

- Location
- Holdings
- Digitization
- BoilerBug
- Progress



Smith Hall, Purdue University
West Lafayette, IN, USA

Purdue Entomological Research Collection

- Smith Hall, East Basement PU
- 1,230 sq. ft.
- 95 cabinets, 24 drawers each
- 24 cabinets, wet collections
- Largest, most important collection of insects in Indiana
- World class mayfly collection
- Repository for IDNR, USDA, Indiana CAPS, other projects



PERC compactor system

Purdue Entomological Research Collection



Specimen Holdings

- ~.5 million pinned specimens
- ~70,000 vials
- ~3,700 types
- ~28,000 slide-mounted specimens
- ~11,000 papered specimens



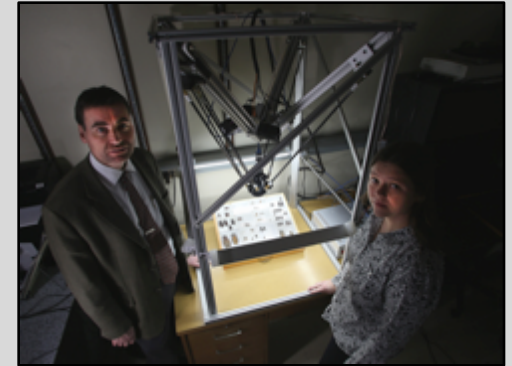
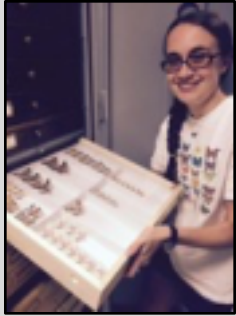
Specimen
Curation

Unique
IDs

Slides
Envelopes
Wet
Collections

or

Whole
Drawer
Digitization



Specify

New Taxon:

Name: Taxonomic Rank:

Parent: Genus Name:

Full Name: Is Preferred: ☐

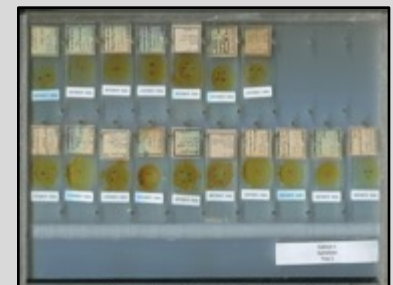
Author: Source:

Published Status:

Remarks:

ATTACHMENTS:

Flatbed Scans



Example #1

Locality data:

PERC ID:

Genus, species:

Collector name:

Occurrence data:

Enter your name here:

Select "slide":

PERC Data Transcription Challenges

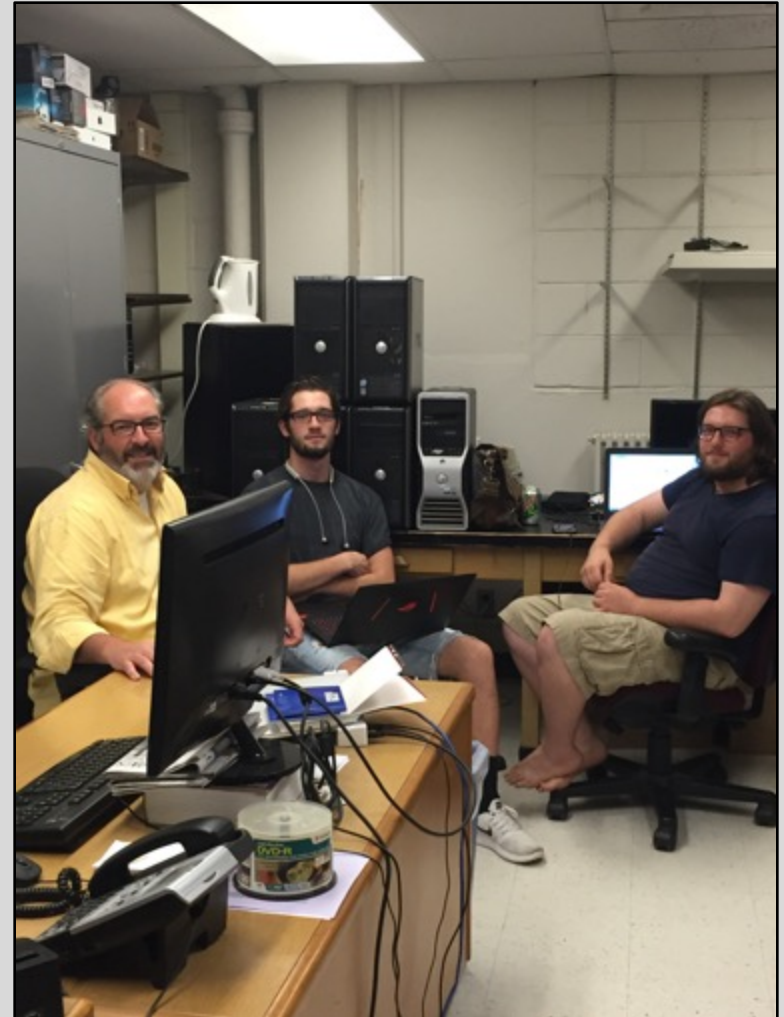
- Task analysis
- Operating costs
- Space constraints
- Equipment
- Time limitations



PERC undergraduate curatorial assistants

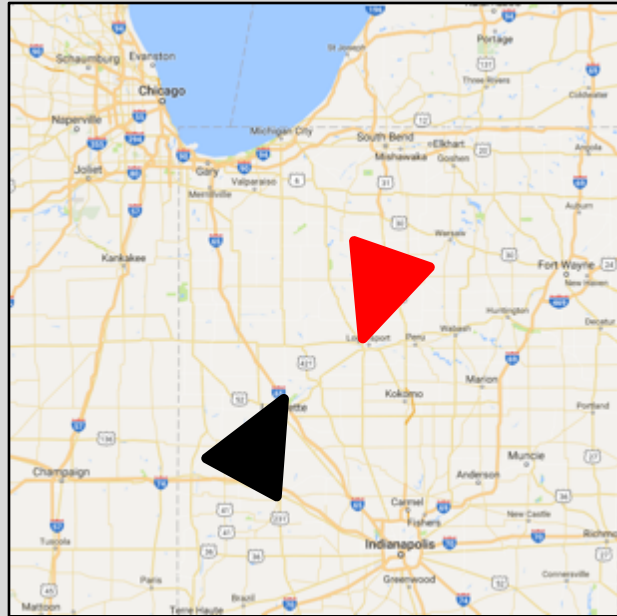
Accelerating PERC Data Transcription

- Fund-raising
- Refurbished equipment
- Space requests
- Advanced HTP imaging
+ Citizen science = ???



Purdue Entomology IT Staff

Logansport Juvenile Correctional Facility



- Established in 1994
- Security level: low-high
- Average daily population: 147
- Students committed by Indiana courts
- All males, 12-18 years of age



PERC + LJCF = BoilerBug Project

- Classrooms (science, English, math, art, social studies, college prep, telecom, intro to construction, interpersonal relationships)
- 5 data transcription workstations
- 5 students
- 1 class period 5 days/week
- 3 training session/year
- Data transfer (HD)
- Quality check
- Upload to PERC database
- Certificate

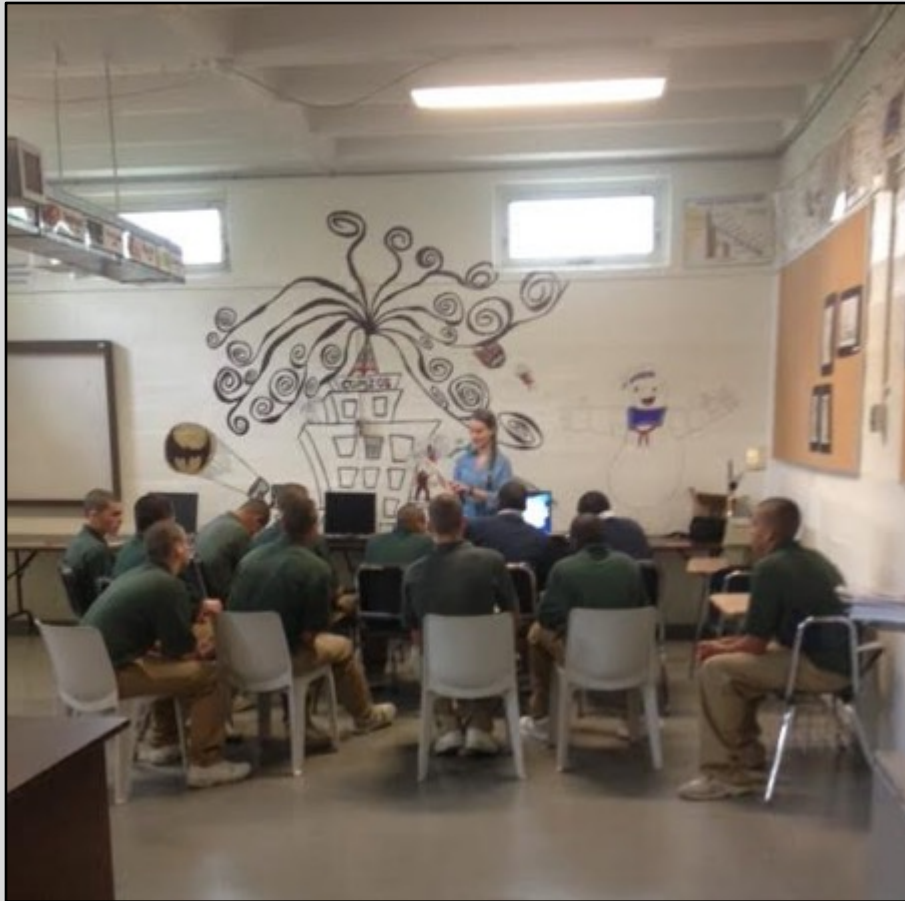


Purdue Pete, Boiler Maker

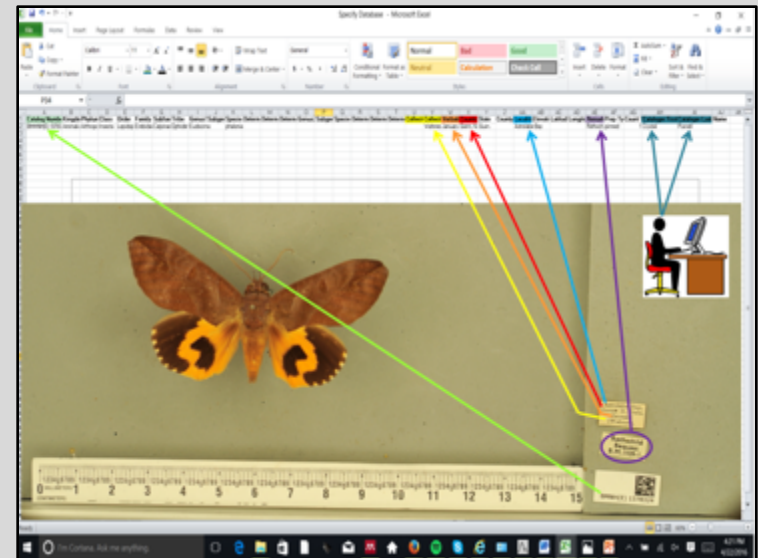
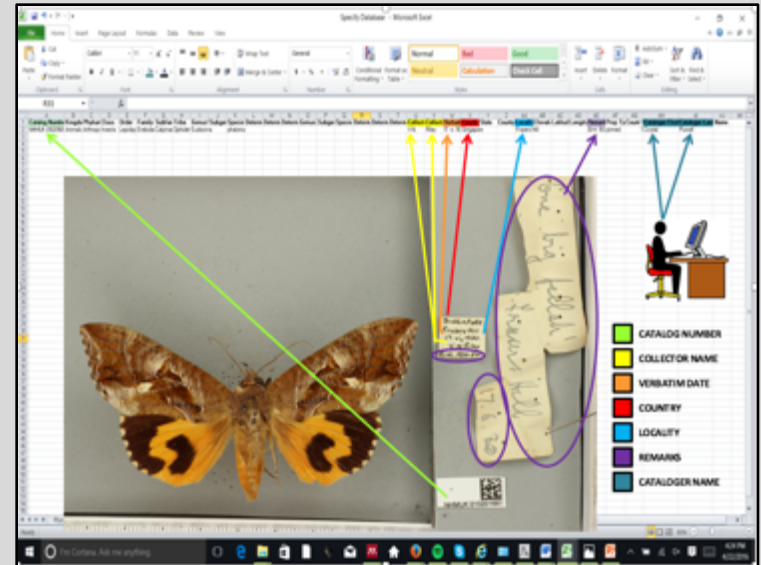


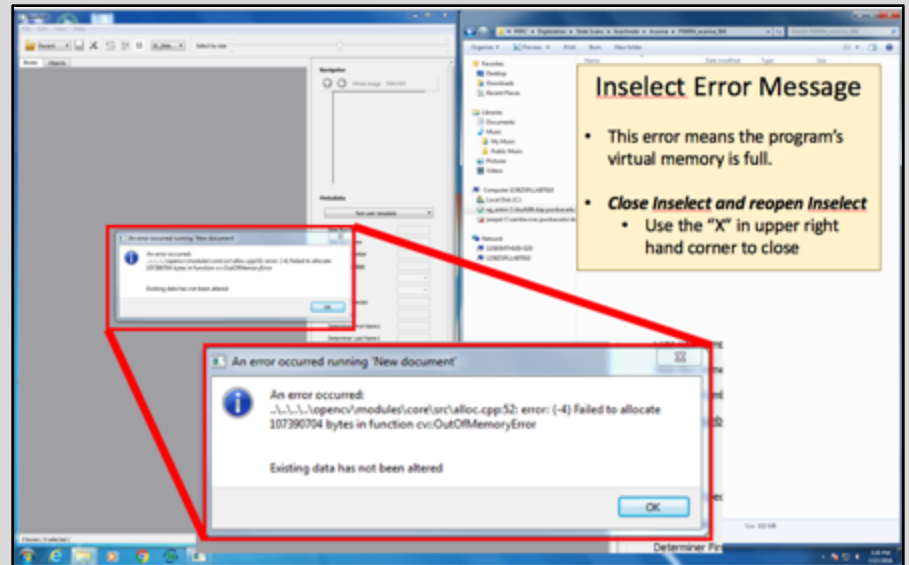
LJCF BoilerBug Training

BoilerBug Phase I: Training



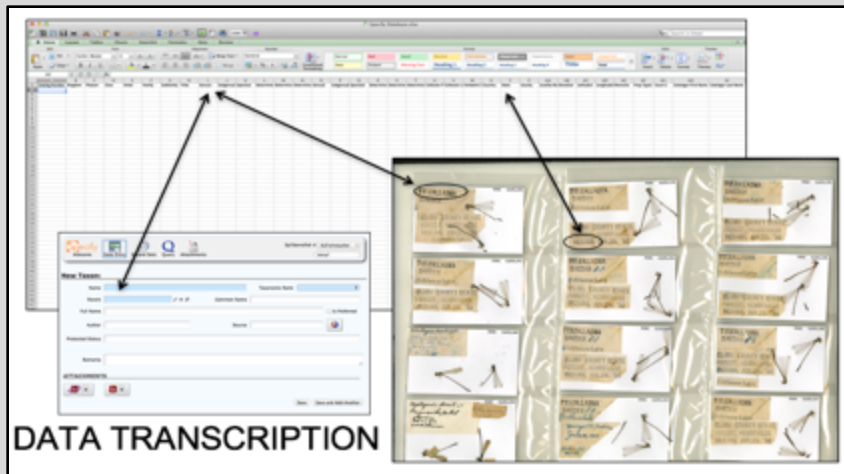
PhD. student Crystal Klem training LJCF students; 30 youth participants trained thus far.



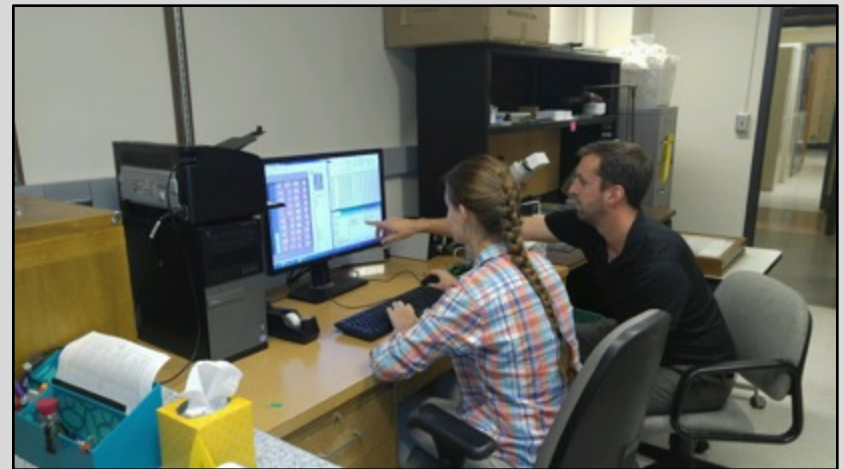
[illegible]

BoilerBug Phase III: Quality Control

- “Click and drag” errors, deleting images
- Entering the same label data in multiple fields
- Incomplete data entry



Data transcription spreadsheet



PERC students checking transcription data

Broader Impacts

- Research indicates that there is a human benefit to being exposed or connected to nature
- LJCF students receive IT training from Purdue faculty, staff and students
- LJCF students gain a better understanding of insects and their impact on our world
- Team building, problem solving skills development
- Responsible for documenting important data
- A model that can be applied to other facilities

LJCF Student and Instructor Feedback!!!

“I think the BoilerBug Project helps occupy time and really keeps people’s focus compared to getting in trouble. I personally enjoyed it. (It’s difficult at first but when you get the hang of it it’s kind of fun!)” – Student

“I’ve found the Boiler Bug Project to be an interesting challenge for many students. Those selected participate in a Purdue project, contribute to a worldwide data resource, and earn a certificate of participation from the university. A great source of enthusiasm and a rare experience!” – Jeff Merrell, Teacher, LJCF

Acknowledgements



- Zaspel Laboratory, Jacobus Laboratory (IUPUC)
- Inselect Development Team
- LJCF Staff and Teachers
- Purdue Entomology & Research Associates
- Funding provided by Purdue University (Hatch, College of Agriculture), US Department of Agriculture (APHIS-PPQ), National Science Foundation (EF: InvertNet 1339379, DBI: LepNet 1601957, CSBR 1561448)

